



COMMUNITY
FOUNDATION
JEFFERSON COUNTY

2020 ANNUAL REPORT



COMMUNITY FOUNDATION

JEFFERSON COUNTY

Dear Friends,

While 2020 was far from a conventional year for everyone, great things were still accomplished by your Community Foundation.

Though the rhythm of our work had to be adjusted to follow safety guidelines related to the COVID-19 pandemic, we were still able to step up and provide support and funding where needed. In March 2020, our Board of Directors activated our Disaster Relief Fund to collect donations to provide the Rapid Response Grant Cycle (pages 2-3). These grants were an immediate way to help our local nonprofits respond to the COVID-19 pandemic as they continued to serve their clients.

As the year went on, we realized how much we missed meeting in person with our donors and volunteers – these relationships and interactions are just two of the things we love most about our work! We were fortunate to have seven new endowments (pages 4-5) created by generous people who wanted to make an impact in Jefferson County. And, although we were unable to hold our traditional face-to-face events and receptions, we were still able to award competitive grants and scholarships totaling nearly \$300,000 (pages 17-21).

A hopeful step toward the future was taken with the creation of Resilient Jefferson County. The Community Foundation is a strategic ally of the KDH Foundation program and has helped financially with a \$100,000 Community Leadership Implementation Grant from Lilly Endowment Inc. (page 9). This initiative has already begun to raise awareness of Adverse Childhood Experiences (ACEs) in 2021 by presenting screenings of the documentary film *Resilience: The Biology of Stress and the Science of Hope* and looks forward to hosting more education and training sessions in the months to come.

In 2021, your Community Foundation celebrates its 30th Anniversary. This milestone is even more exciting as we follow a year of adjustments, uncertainty, and resolve. It exemplifies the power of endowments and how the Community Foundation will remain a strong supporter of Jefferson County FOREVER.

Sincerely,

Ben Foley
Board Chair

Bill Barnes
President & CEO

THANK YOU TO OUR DISASTER RELIEF FUND DONORS!

The following individuals
and businesses
generously donated to the
Disaster Relief Fund:

Jarrett Boyd
Michael & Kate Brown
David & Rena Caldwell
Paul & Cherri Cronen
First Financial Bank
Friends of Julie Berry
German American Bank
Dianne Hill
Chris & Karol Kirk
Fred & Judy Koehler
Kim Kreuzburg
Meg Perry
Evelyn Wheeler

GLOBAL <-----6ft.-----> SOCIAL PANDEMIC... DISTANCING...

**Both are phrases that
our current generations
never thought would
be a part of our
daily dialogue and
vocabulary. The normal
we all knew had to be
adjusted.**

The beginning of 2020 started out as any normal year for the Community Foundation. We were coming off of a fantastic year of growth; the new class session of the Leadership Jefferson County program had begun; the Women's Giving Circle was preparing for their annual dinner—and scholarship committees were reviewing applications; all while the nation kept its eyes and ears tuned to news about a new, highly contagious virus that had reached the United States.

To help protect the health and safety of the staff, volunteers, donors, and the public, the Community Foundation decided to close its office to visitors on March 18, 2020. Other foundations across the state were doing the same; closing their offices to the public, but having staff continue the important work of the organization. CFMJC's Board of Directors and committee meetings were moved to audio and video conferencing platforms, and staff members took extra precautions to sanitize and socially distance while in the office.

On March 23, 2020, the CFMJC Board of Directors approved activating the Disaster Relief Fund. This pass-through fund was created in March 2012 in response to the tornado disaster that struck the western portion of Jefferson County at that time. Donations made to this fund were used during the COVID-19 Rapid Response Grant Cycle. Nonprofit organizations could apply and request up to \$5,000 on a first come, first served basis for immediate needs including increased services

to the Jefferson County community, or to minimize the impact on their own organization. The CFMJC Board of Directors approved committing \$50,000 of the unrestricted dollars to support the grant program. "We are incredibly grateful to all who donated to the Disaster Relief Fund during these challenging economic times," said CFMJC President & CEO Bill Barnes. "Of the money donated to the Disaster Relief Fund, 100% was distributed by the Community Foundation to nonprofit organizations who assisted the families whose lives were disrupted by the pandemic." Thanks to the generosity of donors, \$75,875 was awarded to 20 nonprofit organizations. Grants provided care packages, personal protection equipment (PPE), rent assistance, and covered the basic needs of Jefferson County residents, to name a few.

Throughout 2020 and continuing through today, the Foundation monitors Jefferson County's COVID-19 infection rates and follows guidelines and precautions from the Centers for Disease Control

(CDC) when operating the office and determining the status of events and gatherings.

The Community Foundation is as strong and healthy as ever, financially and organizationally, thanks to the thoughtful stewardship of our Board of Directors, as well as the many generous donors who have given since the Foundation's creation in 1991. No matter what circumstances our county may face in the future, the Community Foundation will be here, ready to lead and support Jefferson County's residents.

**We are here – For Good.
FOREVER.**

COVID-19 RAPID RESPONSE GRANT RECIPIENTS:

Big Brothers/Big Sisters of
Jefferson County

City of Madison Police
Department

Developmental Services, Inc.

Girls Inc. of Jefferson County

Habitat for Humanity of
Jefferson County

Historic Madison, Inc.

Hope Community

Ivy Tech Community College

Jefferson County 4-H &
Agricultural Association

Jefferson County Public Library

Jefferson County Transitional
Services / Ruth Haven

Jefferson County Youth Shelter

King's Daughters' Health

Lide White Memorial Boys &
Girls Club

Madison Main Street Program

Safe Passage

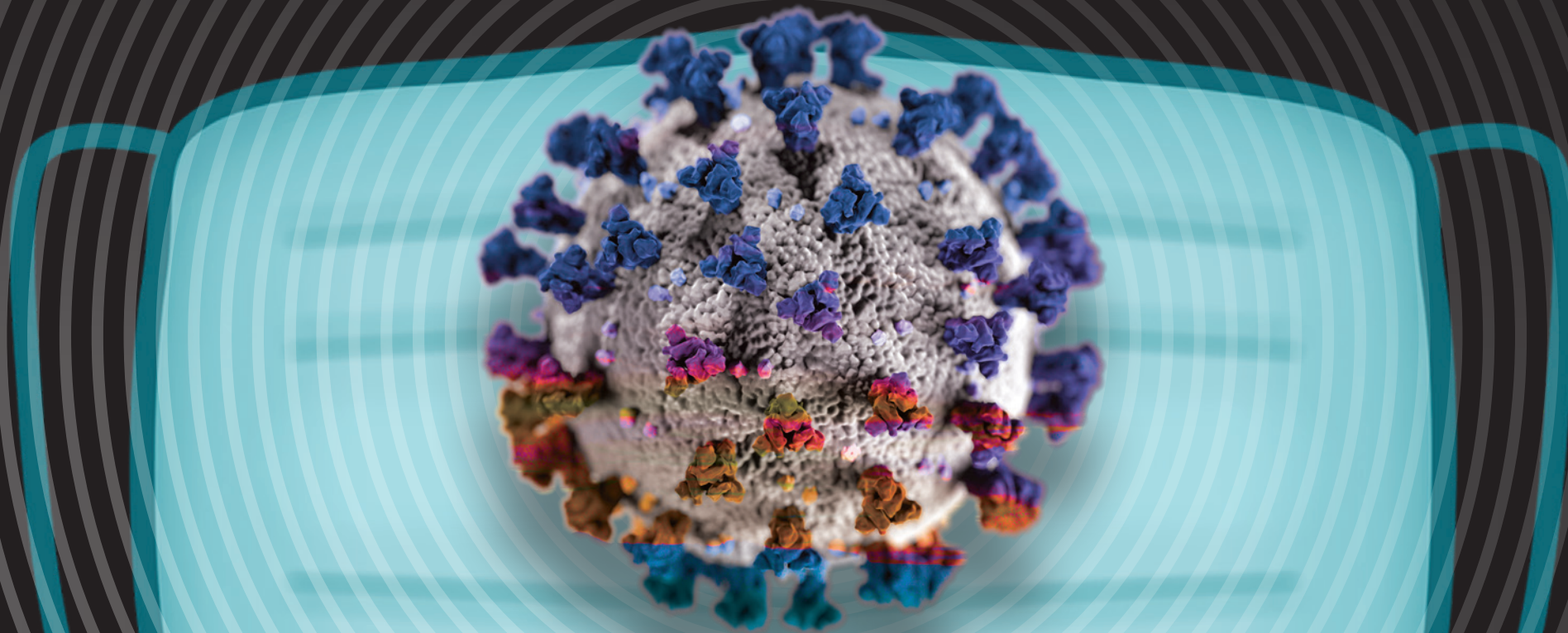
Salvation Army – Madison
Citadel

Southeastern Indiana Voices for
Children, Inc.

Southwestern Jefferson County
School Corp.

Venture Out Business Center

**TOTAL DOLLARS GRANTED:
\$75,875**



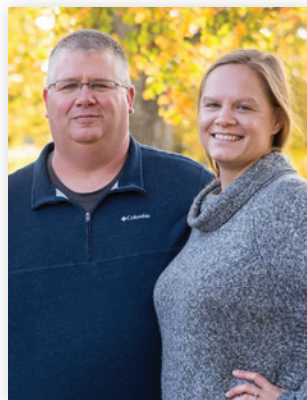
In 2020, the Community Foundation had 7 new endowments established. Read on to find out more about our different endowment types and about the donors who established these new funds.

DONOR ADVISED FUNDS

allow donors to recommend the charitable organizations that benefit from the fund's annual distribution. Donor Advised Funds are a cost-effective and efficient alternative to a private or family foundation. The minimum amount to establish a Donor Advised Fund is \$5,000.

Lichlyter Fund for Youth

Beth and Josh Lichlyter established this Donor Advised Fund to help programs that support youth. The couple recognizes the need in the community to support youth who may be in need or in crisis. Through years of community involvement in youth sports, they have witnessed the positive impact that can be made in the lives of children in challenging situations and want to ensure that these opportunities exist for generations to come. Their Donor Advised Fund will ensure that this type of support continues in their community. Each year, Beth and Josh will choose organizations and programs that serve youth to receive the grants from the fund.



Devon and Rachel Sharpe Charitable Fund

Devon and Rachel Sharpe established a Donor Advised Fund this year to help with their charitable giving throughout the year. Devon and Rachel advise the Foundation about donations to make from this fund, and the Foundation takes care of the check writing and record keeping, giving them maximum flexibility with their generosity.



DESIGNATED FUNDS

provide donors the ability to create a steady stream of income to one or more specific charities – forever. The minimum amount to establish a Designated Fund is \$5,000.

Hanover United Methodist Church Food Pantry Fund in Memory of Marie Stier

This designated endowment was created by Josh and Barb Ford in memory of Barb's grandmother, Marie Stier. Marie was the mother of eight children and fifty grandchildren. She was an accomplished cook and avid card player. She was known throughout the region for her cooking, with many friends and relatives requesting her dishes and pies for all occasions. She would never allow anyone in her presence to go hungry. Marie's ability to live in the moment and love unconditionally made her beloved to all who knew her well. Grants from this fund will support the Hanover United Methodist Church Food Pantry to provide food to residents of western Jefferson County.



Lou Knoble Gift of Art Fund

Lou Knoble has been a fixture of the Madison arts community since 1964. He taught art at Madison Consolidated High School for over 30 years, and coached track and cross country in the area for over 40 years. To honor Lou's artistic, teaching, and coaching contributions to the Madison community, his family and friends have established the Lou Knoble Gift of Art Fund. Annual grants from this endowment will be made to the Fine Arts Academy at Madison Consolidated High School to support art enrichment experiences and special programs for the students.



SCHOLARSHIP FUNDS

support local students pursuing their academic goals following high school. The minimum amount to establish a scholarship fund is \$20,000.

Kenneth E. and Mary Lou Dunbar Scholarship to Honor Perry & Dunbar Drugstore Employees

Kenneth and Mary Lou Dunbar established this scholarship to honor past employees of the former Perry & Dunbar Drugstore. The drugstore has been a staple of the west end of Downtown Madison from 1865 to now, under its new ownership, possibly making it the oldest continuing pharmacy in the Midwest. This scholarship will help local students pursue their educational and career goals in the fields of science or music.



Mayor Damon Welch Memorial Scholarship

The late Mayor Damon Welch was a life-long Madisonian who was devoted to his family, hometown, and church. He was a proud member of the Madison Consolidated High School Class of 1971 and served our country in the United States Air Force. He later served the City of Madison as a City Councilman, and then as Mayor from 2012 until his passing in 2019. Damon's wife, Ginny, along with family and friends, established this Scholarship Fund to honor his memory and his love of education and serving others. Each year, this scholarship will be awarded to a graduating senior of Madison Consolidated High School.



FLEXIBLE COMMUNITY FUNDS

give the Community Foundation the flexibility to assist nonprofits annually through grants. Through these funds, donors create a lasting legacy to fulfill the ever-changing needs and dreams of the people of Jefferson County. The minimum amount to establish a Flexible Community Fund is \$5,000.

Vonderheide Family Community Appreciation Fund

Betsey Vonderheide established this Flexible Community Fund as a big THANK YOU to the City and County for the many blessings her family has been given over the years. This is a "homegrown" family, and each member has benefited from local programs for youth, the arts, the business community, and other opportunities over the years. This fund is designated as flexible because the proceeds can benefit the varying needs of the community. Each year, grant dollars from this fund will be directed where and when they are needed most during the Foundation's competitive grants cycle for many generations to come.



In addition to the funds mentioned previously, we also offer Acorn Funds, Agency Funds and Field of Interest Funds.

ACORN FUNDS

allow donors to establish a fund over a period of time until they reach the fund minimum. The founding donors pledge to contribute annually to the endowment, usually over a five-year period. Acorn funds are an ideal vehicle for family members, co-workers, classmates, friends, or neighbors to establish a fund over time to support charitable causes that are meaningful to them.

AGENCY FUNDS

provide an avenue for nonprofit organizations to invest their own money and create a perpetual stream of support for their mission. The minimum amount to establish an Agency Fund is \$5,000.

FIELD OF INTEREST FUNDS

provide support to a donor's particular area of interest. The Community Foundation staff, Grants Committee, and Board of Directors identify projects that elevate and support these specialized interests. The minimum amount to establish a Field of Interest Fund is \$5,000.

COMMUNITY FOUNDATION ENDOWMENTS (YEAR ESTABLISHED)

The funds listed below demonstrate what a wide variety of interests people have. Each of them is established with a fund agreement, which directs how the donor wants grants used now and far into the future. The endowments are pooled for investment purposes but accounted for separately. Anyone can add to any fund at any time in any amount. What interests you?

ANIMALS

- Jerry E. Andress Memorial Animal Shelter Endowment (2008)
- Community Spay/Neuter Fund (2011)
- Friends of the Jefferson County Animal Shelter (2008)
- Jefferson County Animal Welfare Fund Endowment (2017)
- Madison-Jefferson County Humane Society, Inc. Audrey M. Smith Chapter Fund (1994)
- Spirit's Fund (pet responsibility education for youth) (2004)

THE ARTS

- Community Endowment for the Arts (1996)
- Harold A. "Hal" Davis Memorial Endowment for the Arts (2017)
- Madison Area Arts Alliance Endowment (2018)

COMMUNITY CONSERVATION

- Broadway Fountain Endowment Fund (2000)
- Catholic Cemeteries of Jefferson County Fund (2017)
- College Hills Cemetery Endowment (2015)
- Friends of Hargan-Matthews Park Fund (2017)
- Historic Eleutherian College Memorial Endowment (2016)
- Historic Hoosier Hills RC&D Endowment Fund (1995)
- Jefferson County Historical Society Endowment Fund (1993)
- Jefferson County Medical Society Endowment Fund fbo Dr. Hutching's Office (1997)
- Lanier Mansion Endowment (2018)
- Madison Riverfront Development Corporation Endowment (2018)
- Madison Riverfront Endowment Fund (1995)
- Endowment for Pearl Park (2009)
- Rogers Family Memorial Historical Research Fund (Jefferson Co. Historical Society) (2008)
- Save Our History Endowment (Jefferson Co. Historical Society) (2017)
- The Weinberg Family Fund (1995)

COMMUNITY SERVICE

- Clearinghouse of Jefferson County Endowment Fund (2014)
- Greg Cloud Memorial Endowment (fire companies) (2007)
- Community Foundation Administrative Fund (1996)
- Deputy Volunteer Fire Company Endowment (2019)
- James T. and Jennie P. Ford Endowment for the Kent Volunteer Fire Co. (1997)
- Friends of the Madison-Jefferson County Public Library Endowment (2015)
- Richard Tevis Heck/Ruth Irwin Heck Fund for the Hanover Volunteer Fire Co. (1997)
- Jefferson County House of Hope Endowment in Memory of Patty Cooper (2016)
- Ladies' Auxiliary of Kent Fire Department Endowment Fund (1996)
- Retired Seniors Volunteer Program Endowment (2007)
- Salvation Army Endowment in Memory of Tom Palfreeman (2016)
- Stellar Madison Fund (2017)
- Tri-Centennial Observance Fund (our Nation's Tri-Centennial in 2076) (1994)
- Youth As Resources, Jefferson County, Endowment Fund (2001)

EDUCATION

- Mary Battles Canida Memorial Endowment (2013)
- Patty Cooper Memorial Endowment for Hanover Presbyterian Church Preschool (2016)
- Marty and Bea Ferguson Endowment (Prince of Peace Catholic Schools) (2008)
- For the Little Ones Fund: Madison Consolidated Schools Pre-Kindergarten Program Endowment (2019)
- Dr. Gertrude Geraets Memorial Fund for Prince of Peace Catholic Schools (2015)
- Nathan Hadley Memorial Fund for MCHS Career Readiness (2017)
- Hanover Community Education Fund (2006)
- Lou Knoble Gift of Art Fund (2020)

- Madison Consolidated High School Special Education Endowment (2012)
- Madison Consolidated Schools Educational Foundation Funds (1994)
- Madison-Jefferson County Public Library Endowment Fund (2001)
- MJHS Peer Counseling Endowment in Honor of Dianna Risk (2007)
- Pope John Elementary School Children's Fund (2003)
- Southwestern Schools Endowment in Memory of Kenneth Stier (2017)
- Deborah Lynn Taylor Memorial Endowment Fund (E.O. Muncie student assistance) (1999)
- Betty S. Wynn Memorial Fund (Business Teacher Professional Development at Madison Consolidated H.S.) (2010)

THE ELDERLY

- Hagemann Endowment Fund for Meals on Wheels (2002)
- Lifetime Resources Senior Services Development Fund (1997)

THE ENVIRONMENT

- Richard Tevis Heck/Ruth Irwin Heck Fund (Indiana Foresters) (1995)
- Heritage Trail Conservancy Endowment (2011)
- John Paul Park Conservancy Endowment (2012)
- Frieda Suppes Jones/John Price Jones Memorial Fund (Jefferson County Environment) (1993)
- Madison Beautification Fund (2019)

HEALTH

- B.R. and H.L. Alexander Memorial Endowment for H.O.P.P.S. (Helping Our Pediatric Patients Smile) (2015)
- Bethany Circle/Della Courtney Memorial Endowment Fund (KDH) (2000)
- Centerstone Mental Health Fund for Jefferson County (2008)
- Developmental Services, Inc. Endowment Fund (2000)
- Domestic Violence Support Fund (Safe Passage, Inc.) (2018)
- Wanda Jackson Sunshine Fund for Huntington's Disease (2016)
- King's Daughters' Hospital Fund (1995)
- King's Daughters' Hospital/William G. Crosby Fund for Pediatrics (1992)
- Life Choices Clinic Endowment (2016)
- Beverly McGuire Scott Memorial Fund (KDH - Oncology) (1995)

RELIGION

- Jeanne Bunton Memorial Endowment for Madison Presbyterian Church Clapham (1998)
- Delbert O. King Memorial Endowment Fund (2000)
- Christ Episcopal Church Endowment Fund (2008)
- First Christian Church Endowment (2015)
- Hanover Presbyterian Church Fund (1995)
- Hanover United Methodist Church Endowment Fund (1997)
- Hanover United Methodist Church Food Pantry Fund in Memory of Marie Stier (2020)
- Richard Tevis Heck/Ruth Irwin Heck Fund for Madison Presbyterian Church (2002)
- Kessler and Lawrence Family Endowment fbo Christ Episcopal Church (1999)
- Roland Lichlyter Fund for the Hanover United Methodist Church (2014)
- Arleida R. Metz Memorial Fund (Prince of Peace Catholic Parish) (1994)

VETERANS

- Caring for Veterans Fund (2015)
- Indiana Veterans Memorial Cemetery Endowment (2019)
- Jefferson County Veterans Fund (Jefferson County Veterans Council) (2015)

YOUTH

- Gerald Amos Memorial Endowment Fund (intellectually challenged children) (1996)
- Big Brothers/Big Sisters of Jefferson County Endowment Fund (1998)
- Eleanor T. Birk Foundation Youth Fund (2015)
- Boy Scout Camp Louis Ernst Fund in Honor of Don Riley and Perin Scott (2018)
- James M. Demaree Memorial Fund (Girls, Inc.) (1995)
- Justin Geyman Memorial Endowment (Jefferson County Soccer Association) (2007)
- Girls Inc. of Jefferson County Endowment Fund (1994)
- Hanover Fund for Youth (1996)
- Jefferson County 4-H Horse & Pony Program Fund in Memory of Helen Kreeger (2017)
- Jefferson County 4-H Development Fund (1996)
- Jefferson County Youth Fund established by the Goodmans (1998)

- Jefferson County Youth Shelter Endowment in Memory of John Clapham (1998)
- Delbert O. King Memorial Endowment Fund (2000)
- Lide White Memorial Boys & Girls Club Endowment Fund (1998)
- Dr. Marcella S. Modisett Endowment for Girl Scouts of Kentuckiana (1996)
- Dr. Harve and Joyce Rawson Memorial Endowment (Englishton Park) (2008)
- Barbara Trimble Memorial Fund for Girls Inc. (2015)

MULTIPLE

- Carl J. and Mary M. Hoefling Fund (First Christian Church, Jefferson County Historical Society, Pilot Club, and Retired & Senior Volunteer Program) (2001)
- Larry and Charmaine Owens Endowment (Girls Inc., Madison-Jefferson County Public Library, Madison Rotary Club scholarship program) (2008)
- Schroeder Foundation Endowment Fund (local social service agencies) (1993)
- William F. Stephan Family Fund (Heritage Trail Conservancy, Jefferson County Veterans Council, LifeTime Resources, and Madison Riverfront Development Corporation)
- Women's Giving Circle Endowment in Memory of Bonnie Hare (agencies serving women and children) (2012)

DONOR-ADVISED FUNDS

- Dan and Molly Baughman Charitable Fund (2019)
- Bethany Circle/Mary E. & Artz Ellis Memorial Fund (1994)
- Canida/Knox Family Fund (1993)
- Children's Fund of Jefferson County (2013)
- Cronen/Marsiglio Family Endowment Fund (1997)
- Dorsey Family Endowment (2019)
- Bob and Brenda Eversole Endowment (2011)
- Grandma's Cookie Jar Fund in Memory of Rita Miller Adams (2011)
- Tony Greco Memorial Fund for the Arts (2015)
- Grote Lamplighters Endowment (2018)
- Brok D. Hensler Memorial Endowment (2002)
- Howard and Mary Muncie Hensler Memorial Fund (2017)
- Mike Hess Memorial Endowment (2012)
- Hubbard Family Endowment (2018)

- Al and Connie Huntington Family Community Fund (2014)
- Kristen E. Kemper Memorial Endowment (2008)
- Kings' Daughters' Health Community Health Initiatives Endowment (2000)
- Lichlyter Fund for Youth (2019)
- Madison Chemical Company, Inc. Employees Fund (1997)
- James A. and Dixie J. McDonough Art Education Fund (1999)
- McKay Family Fund (2013)
- Jon Menke Memorial Endowment (2008)
- Morgan Family Advised Fund (1996)
- Mickie Nethery Memorial Endowment (2007)
- Dr. John W. Petscher Memorial Endowment (2012)
- Neida Rogers Memorial Endowment for Music (2008)
- Fernando and Julie Rubio Charitable Endowment (2018)
- Jason and Marlana Schafer Family Charitable Fund (2019)
- Skiles Family Endowment Fund (1997)
- Clifford O. Taylor Memorial Fund for the Performing Arts (2001)
- Vecchie-Campbell Family Endowment (2019)
- The Wallis Family Fund (1993)
- Tony and Robin Waltz Family Fund (2014)
- Evelyn Wheeler Charitable Endowment (2019)
- John and Maureen Wurtz Charitable Fund (2015)

FLEXIBLE COMMUNITY FUNDS

- 7 Hugs: The David E. and Sally Kirk Webster Family Endowment (2018)
- Bill and Stacy Barnes Charitable Endowment (2018)
- Eleanor T. Birk Foundation Community Fund (2018)
- Community Foundation Board Member and Alumni Fund (2014)
- Barbara Ann Cowan Memorial Fund (2002)
- Cronen/Marsiglio Family Unrestricted Endowment (2002)
- First Financial Bank Community Fund (2015)
- Gardner Insurance Agency Community Fund (2015)
- German American Bank Endowment (2018)
- The Douglas and Ann Grahn Endowment (2002)
- Walter A. and Jean Graham Greiner Memorial Fund (1994)

- Jefferson County Enrichment Endowment (2001)
- Jenner Family Endowment (2018)
- The Lineburg Family Endowment (2002)
- Madison Precision Products Community Fund (2014)
- Gil and Trudy McCoy Unrestricted Endowment (2001)
- The John Morgan Family Fund (2002)
- Rinda Rains Memorial Endowment (2002)
- Julius “Bud” and Irene Ritter Memorial Endowment (2001)
- Margaret Francis Seifert and Gregory A. Russell Endowment (2014)
- Sherman, Barber, & Mullikin Fund for Jefferson County (2018)
- Norbert A. “Tony” and Phyllis Steinhardt Family Endowment (2019)
- Nancy J. Strandmark Memorial Fund (2017)
- Ann Suchocki and Jim Mason Family Fund (2014)
- Tribute and Memorial Fund (1992)
- Vehicle Service Group Employee Endowment (2015)
- Vonderheide Family Community Appreciation Fund (2020)
- George Wagoner, MD and Marjorie Jefferies Wagoner, MD Fund (2001)
- Robert E. Wall, DDS Fund (1993)
- Don R. Wallis Memorial Fund (1992)

SCHOLARSHIPS

- Sharon Thom Alcorn Memorial Scholarship (1998)
- M.W. Anderson Scholarship (1997)
- Helyn Bishop Scholarship (2004)
- Broadway School Alumni Scholarship (1996)
- Keith Brooks Memorial Scholarship (1996)
- Calvin Family Scholarship (2013)
- CAM Car Club Scholarship (2016)
- Hendricks R. Canida Scholarship Contest Fund (2014)
- Tiffany Lee Carter Memorial Scholarship (2003)
- Gary Chapman Memorial Scholarship Fund for the Arts (2018)
- Lisa Cheatham Memorial Scholarship (2008)
- The Chan Chilton Memorial Scholarship (1998)
- Class of ’84 Scholarship (1995)
- Joseph V. Cline Scholarship (1994)
- Thomas D. Craft, Jr. Memorial Scholarship (2007)
- Christie Crafton Memorial Scholarship (1995)

- Norma A. Cull Memorial Scholarship (1994)
- Deputy Alumni Scholarship (1997)
- Kenneth E. and Mary Lou Dunbar Scholarship to Honor Perry & Dunbar Drugstore Employees (2020)
- Dupont Alumni Scholarship (2000)
- Frances K. Eisan Memorial Scholarship (2013)
- Mabel C. Green Memorial Scholarship (1995)
- Hall Family Scholarship (1994)
- The Hanover College/Paul Ogle Fund (Hanover College) (1993)
- Marjorie Cornell Hare Nursing Scholarship Fund (Ivy Tech) (2012)
- Dr. Fred S. Henderson Family Scholarship Fund (Trinity United Methodist Church) (2015)
- Dennis Holt Memorial Scholarship (2000)
- Glenn G. and Dorothy Ebel Huntington Memorial Scholarship (1999)
- Jefferson County 4-H Scholarship (1997)
- Ralph and Robyn Jones Family Memorial Scholarship (1998)
- Charles H. and C. Chris Keller Scholarship (1994)
- George and June Kirk Scholarship (1999)
- Fred and Judy Koehler Family Scholarship Fund (2017)
- Dorothy B. Lotz Scholarship (1995)
- Madison Chautauqua Scholarship For the Arts in Memory of Bob Fourhman (1994)
- MCHS Class of 1966 Scholarship Fund (2011)
- Madison Kiwanis – Connor K. Salm Scholarship (2019)
- Lynn A. Maricle Music Scholarship (2006)
- Dale McNeely Scholarship Fund (2009)
- Father Hilary G. Meny Scholarship (1994)
- George and June Miller Memorial Scholarship (2014)
- Marcia S. Morrill Scholarship of the Madison Rotary Club (1996)
- Terri Nighbert Memorial Scholarship (1998)
- Bill Oldaker Scholarship Fund of the Madison Rotary Club (1992)
- Brad O’Leary Scholarship (2001)
- Mary Elizabeth Patterson Scholarship (2014)
- Troy Allen Pyles Memorial Scholarship (2004)
- Dr. Harve E. and Joyce E. Rawson Scholarship (Franklin College) (1999)

- J. Michael Sample Memorial Scholarship for Music (1997)
- Bonnie and Printis Shelton Scholarship Fund (2018)
- Carolyn Bruce Spicer and Gene E. Spicer Nursing Scholarship (2019)
- Brian W. Stites Memorial Scholarship (1996)
- Erin Turner Memorial Scholarship (2002)
- Mayor Damon Welch Memorial Scholarship (2020)
- Nathan Wilson Memorial Mathematics Scholarship (1998)
- The Wood Memorial Scholarship (1995)
- Curtis Wright Memorial Scholarship (1999)

NONPERMANENT FUNDS

These advised funds are established with the purpose of spending their entire principal. Donors annually decide how much they want to donate to charities, make a lump sum gift into their fund (usually of appreciated stock) in that amount, and then advise the Foundation on how they would like the available money distributed to nonprofit organizations.

- Alex Feltner Memorial Fund (2016)
- Fred and Judy Koehler Charitable Fund (2016)
- Bill and June Nighbert Charitable Fund (2006)
- Devon and Rachel Sharpe Charitable Fund (2020)



HOPE FOR A RESILIENT COMMUNITY

Though the world spent the majority of 2020 focused on health issues related to COVID-19, the Community Foundation continued to be a strategic ally of the KDH Foundation by supporting the work of the Healthy Communities Initiative of Jefferson County (HCI) and the exploration of the impact of Adverse Childhood Experiences (ACEs) in the local community.

In October 2020, the Community Foundation was awarded a \$100,000 Community Leadership Implementation Grant from Lilly Endowment Inc. This grant has a three-year timeline and follows the framework established through a Community Leadership Planning Grant, which has led to the creation of Resilient Jefferson County.

Resilient Jefferson County is a new initiative of the KDH Foundation with a mission “to transform our community and the health of future generations by becoming trauma informed and preventing Adverse Childhood Experiences (ACEs).” Adverse Childhood Experiences (ACEs) are defined as all types of abuse, neglect, and other potentially traumatic experiences that occur to people under the age of 18. Studies have shown that the more ACEs a child experiences, the greater the risk of future physical and mental health problems. “Both the KDH Foundation and the Community Foundation believe that we need to focus on root causes of the poor health outcomes we’re all witnessing,” said Community Foundation President & CEO Bill Barnes. “So much of the funding at local, state, and national levels address the symptoms downstream, rather than seeking the causes and investing in prevention upstream. We believe the best path is to identify evidence-based approaches that will improve the health of the residents of Jefferson County.”

Resilient Jefferson County’s 10-person steering committee includes members from the education, mental health, business, general healthcare, community corrections, and nonprofit sectors. The committee, along with many community volunteers and leaders, are working the strategic plan to educate the community on trauma, the impact of toxic stress, and how ACEs affect youth and adults. The initiative has launched its website, social media channels, and community screenings of the documentary film *Resilience: The Biology of Stress and the Science of Hope*. According to Barnes, “Watching *Resilience* is the basic building block of understanding what ACEs are in order to address the issues that are the root of many of the poor physical and mental health outcomes in our community. After watching this movie, people will understand why we must work together to become a trauma informed community.”

Knowing that this type of initiative has been launched makes us hopeful and excited to see a bright future for children and adults alike where resiliency and good health thrive.

To find out more about Resilient Jefferson County, ACEs, or education and training opportunities, visit www.resilientjeffersoncounty.org, or email Keith Howard, HCI Coordinator, at howardk@kdhmadison.org.

ACEs = Adverse Childhood Experiences

“ACEs are all types of abuse, neglect, and other potentially traumatic experiences that occur to people under the age of 18.”

ACEs include:

- Emotional Abuse
- Physical Abuse
- Sexual Abuse
- Domestic Violence in the household
- Separated or Divorced parents
- Mental Illness in the household
- Substance Abuse in the household
- Incarcerated household member
- Emotional Neglect
- Physical Neglect

JEFFERSON COUNTY HEALTH DATA

In the State of Indiana, Jefferson County ranks*:

- 15th for Children in Needs of Services (CHINS)
- 16th for the rate of child abuse and neglect
- 12th for single parent families
- 11th for children in poverty
- 23rd for the percentage of babies born prematurely
- 3rd for the percentage of mothers who reported smoking during pregnancy
- 18th for infant deaths under age 1
- 18th for percentage of students receiving out-of-school suspension

*DATA PROVIDED BY THE INDIANA YOUTH INSTITUTE 2020 INDIANA KIDS COUNT DATA BOOK

LEGACY SOCIETY – HONORING COMMITMENT TO JEFFERSON COUNTY'S FUTURE

The Legacy Society honors individuals who have demonstrated commitment to their community by including The Community Foundation in their estate planning. Too often, these gifts are unrecognized because they come at the end of the donors' lives. The Legacy Society was established in 2003 to publicly thank these donors during their lifetimes. In 2020, we added a new individual to our roster of members.

Membership in the Legacy Society ensures that donors' charitable dollars are utilized in the way they intended. Planned giving may be used to create a new fund, contribute to any of the Foundation's existing funds, or be distributed at the discretion of the Community Foundation Grants Committee.

The Legacy Society has no minimum gift requirement, as each commitment represents a pledge to the community and its future through philanthropy. Membership is voluntary and free. There are several ways to give, including bequests, beneficiary of IRAs and insurance policies, charitable remainder trusts, charitable gift annuities, and charitable lead trusts.

Margaret Seifert-Russell was a well-loved and respected member of the Jefferson County community. The Community Foundation, as well as many other organizations in our county, was fortunate to have Margaret as a supporter and volunteer.

In 2004, Margaret and her first husband, the late Ralph Seifert, joined our Legacy Society shortly after the creation of the program.



Margaret was a valued member of the Community Foundation's Board of Directors, serving from 2011-2017. She served on the Asset Development Committee and was a founding board member of the Women's Giving Circle of Jefferson County.

In 2014, she and her husband Greg Russell established the Margaret Francis Seifert and Gregory A. Russell Endowment. They created this Flexible Community Fund to invest in Jefferson County's future with the belief that it is important to give of their substance, time, and energy to the community and their home. At the time of the fund's creation, they shared that they felt their individual efforts could not do as much as when cooperating with others and the Community Foundation.

Though Margaret passed away in April 2020, her legacy will live on at the Community Foundation through this endowment, her service on our board and to the Women's Giving Circle, and through her Legacy Society gift.

Thank you, Margaret, for your commitment and service to the Community Foundation and the Women's Giving Circle. You are loved and missed.

Have you given any thought about what will happen to your estate after you've passed on?

Life has inevitable ups and downs. Understandably, many people want to make sure that their family members are taken care after they are gone. But have you also considered leaving a legacy for your community? There are many ways to make a planned gift to the Community Foundation, or any nonprofit organization you love.

Contact Bill Barnes at 812-274-0241 or by email at bill@cfmjc.org, and he can share with you the easy options of creating your legacy for Jefferson County's future.

LEGACY SOCIETY MEMBERS:

Dwight & Rita Addleman
Bill & Stacy Barnes
Tim & Kim Breeding
Kate & Michael Brown
Bob & Charlotte Canida
Dean & Jana Clapham
Don & Peggy Clapham
Mary Clashman
Mike & Laurie Dorsey
Bob & Brenda Eversole
George Freeman
Dick & Connie Goodman
Douglas & Ann Grahn
Meredith Gregg
Glenna Hanks Wade

John Hawk
Bill & Jennifer Hensler
Kelley Hoagland
Bob & Claudia Hoban
James & Sherrill Holt
Al & Connie Huntington
Jim Jackson & Alice
Carlson Jackson
Curt & Nancy Jacobs
Kevin Kellems
Chris & Karol Kirk
Fred & Judy Koehler
Connie Mahoney
Allen Manning
Bill & Louise Markel

Don & Caroline McCauley
Gil & Trudy McCoy
William & Edna Meyers
Gerry Michl
Karen Modisett*
Marcella Modisett
Don & Yolanda Phillips
Dale & Kay Rankin
Harve & Joyce Rawson
Wendell & Debbie Seaborne
David & Betty Sebree
Ralph & Margaret Seifert
Printis & Bonnie Shelton
Donald N. Smith
William Stephan

Steven Strandmark
June Taylor
William & Nancy Underwood
Henry Van Leeuwen
Jan Vethrus
Mary Goode Wallis
Tony & Robin Waltz
David & Sally Webster
Suzanne Williams
John & Maureen Wurtz

*indicates new member

LEADERSHIP Jefferson County

BUILDING RELATIONSHIPS FOR THE FUTURE OF OUR COMMUNITY

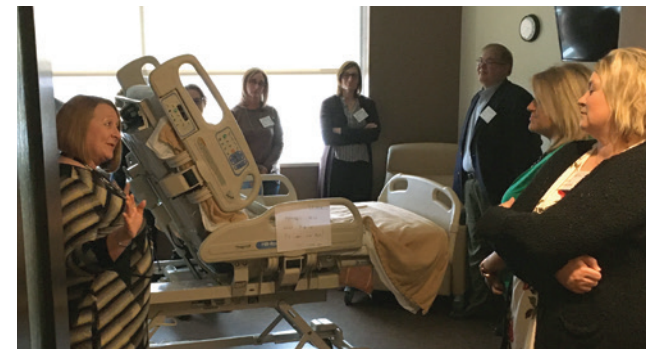
Fifteen community members were selected to participate in the Leadership Jefferson County Class of 2020. Leadership Jefferson County is a bi-weekly, 10 session course comprised of topics to give participants a better understanding of resources and relationships in Jefferson County, including an orientation and sessions on:

Business & Economics
Education
Government Agencies & Organizations
Healthcare

History
Industry & Agriculture
Nonprofits & Volunteerism
Social Services
Tourism

The COVID-19 global pandemic halted the year's class session in the middle of March. Before this happened, the Community Foundation had the opportunity to host the Nonprofits & Volunteerism session in January. Bill Barnes gave an overview of what it means to be a 501(c)3 charitable organization. He highlighted healthy governance practices and invited two nonprofit organizations, the Jefferson County United Way, and the Friends of Hargan-Matthews Park, to share more about their missions and programs.

The Leadership Jefferson County Steering Committee has kept the safety and health of the class, guest speakers, and volunteers at the forefront of their minds while monitoring the progression of the pandemic. At this time, the class has not yet resumed, but looks forward to when they can meet again safely.



Class members listen to King's Daughters' Health staff member Laurie Livorno on their tour of the hospital during the March 3, 2020 Healthcare session. Little did everyone know that the hospital would begin to implement visitation restrictions in response to the COVID-19 pandemic 10 days later.



Members of the 2020 Leadership Jefferson County class took a short walk across Main Street from the Madison Area Chamber of Commerce office to Little People's Boutique & Fine Threads. Store owner Rhonda Sauley shared her perspective as a small business owner in Madison with the participants during the February 18, 2020 Business & Economics session.

The members of the 2020 class (and their employer):

Amy Arbuckle – *Madison Precision Products*
Angela Burch – *Industrial Supply Company*
Katie Burress – *VisitMadison, Inc.*
Jennifer Duplaga – *Hanover College*
Melanie Flores – *Grote Industries*
Casey Goode – *Madison Railroad*
Courtney Gullion – *Ivy Tech Community College - Madison*

Keith Howard – *Healthy Communities Initiative of Jeff. Cty.*
Lee Ann Imel – *Alcorn, Sage, Schwartz, and Magrath*
Jenn Mahoney – *German American Bank*
Amy Nevils – *Madison Precision Products*
Samantha Pierce – *Habitat for Humanity Jefferson County*
Larissa Perry – *Madison Chemical Company*
Nicholas Schafer – *Edward Jones Investments*
Julie Webster – *Grote Industries*



Front Row (from left): Jenn Mahoney, Courtney Gullion, Lee Ann Imel, Larissa Perry, Angie Burch, Julie Webster, and Katie Burress.

Back Row (from left): Amy Arbuckle, Amy Nevils, Casey Goode, Jennifer Duplaga, Nicholas Schafer, Keith Howard, Samantha Pierce, and Melanie Flores.

EMPOWERING WOMEN TO MAKE A DIFFERENCE

Formed in 2012, the Women's Giving Circle of Jefferson County (WGCJC) is a community of philanthropic women of all ages and backgrounds. By combining their financial strength, these women are able to collectively make a positive change for women and children throughout Jefferson County.

Assets of the WGCJC are held and maintained at the Community Foundation through a field of interest pass-through fund and a field of interest endowed fund.

All women in Jefferson County are welcome and invited to join. Membership consists of an annual contribution of \$100, which is tax-deductible. Seventy-five percent of each membership is used to make the annual grants, while twenty-five percent is invested in the WGCJC endowment. Junior Memberships are available for young ladies ages 18 and under for \$50, and are split \$25/\$25.



HOW WE GIVE

The WGCJC makes grants annually to organizations that have the greatest potential to help the women and children of Jefferson County. The Grants Sub-Circle reviews applications and provides grant recommendations to the general membership, which then votes on the recommendations at the annual meeting/dinner in the Spring. Grants are focused on the following four fields of interest, with the specific purpose of benefiting women and/or children:

- Education
- Economic Empowerment
- Physical and Mental health
- Violence and Crime

THE GOALS OF THE WGCJC

- Make a significant difference in the community by empowering women to contribute time, talents, and monetary resources to the needs of women, children, and families
- Educate and increase awareness of the needs of local women, children, and families
- Provide social opportunities, events, and exposure for women in our community

WAYS TO VOLUNTEER

There are several ways to volunteer your time and talents to the Women's Giving Circle. The organization has Sub-Circles (committees) that members can participate in, including:

- Grants
- Governance
- Marketing/PR
- Membership
- Special Events/Annual Dinner

JOIN NOW!

The Women's Giving Circle is open to all Jefferson County women and girls. You can also dedicate your membership or extra gift in memory or in honor of a special woman in your life.

Call 812-265-3327 and ask Julie Wells for more information!



DONORS

Mark and Tammy Acosta
David and Lisa Actor
Drew and Megan Admiraal
Tracy Ahlbrand
The Alcorn Family
David and Nina Alcorn
Mike and Melissa Andrew
Maria Ambrecht
Elizabeth Auxier and Chuck Requet
Kendra Auxier
Julia Barber
Rob and Michele Barlow
Bill and Stacy Barnes
Jodi Barnes and J.B. Maddox
Leana Barnes
Richard and Mary Barron
Tim Barron
Dan Baughman and Molly Dodge
Sara Becher and family
Marta Belt
Julie Berry
Rick Berry
Katy Biallas
Jeffrey and Sarah Blackwell
Gretchen Blake
Lindsay Bloos
Tammy Boldery
Nadja Boone
Bill Borden
Jarrett Boyd
Courtney Bradley
Priscilla Branham
Paul and Carole Bratton
Launa Braun

Tim and Kim Breeding
Tim and Erixana Brooks
Julie Brown
Martha Brown
Michael and Kate Brown
Tom Bruner
Karen Buchanan
Deb Bunton
Mary Kay Butler
Julie Cain
David and Rena Caldwell
Cheryl Campbell
Emma Campbell
Maggie Campbell
Ben and Becky Canida
Bob and Charlotte Canida
Christy Canida
Donna Carl
Debora Carter
Janet Castor
Kyleen Center
Sally Chalian
David and Gayla Cheatham
Mark Cheatham
Dean and Jana Clapham
Dennis and Elizabeth Clark
Paula Clark
Neil and Jennifer Clayton
Linda and Donald Cleffman
Monty and Sharon Clevenger
Jay and Kathryn Coles
Bea Collins
Johnny, Mandy, and Braeden Collins
John and Darleen Connolly
Larry and Rebecca Corson
Marlene Cosby

Bob and Tammy Courtney
Dale and Kathy Crafton
Trevor Crafton
Susan Craig
Valecia Crisafulli
Jim Crone
Paul and Cherri Cronen
Karla Cruz
Mary Beth Cullens
Brenda Cummins
Jenny Darnold
Tom and Mary Davee
Donna Davis
Yvonne Davis
Missy Demaree
Ken and Ann DeMoss
Marie-Pierre Desaulniers
Blake and Julie Deuser and family
Hilary Deuser and Scott Hamilton
Nancy Deuser
Tyler and Alinza Deuser and family
Karen Dickie
Sandy Dierdorf
Tonya Dilger
Jim and Carri Dirksen
Mike and Laurie Dorsey
Donna Dougan
Abigail Douglass
Carol Dozier
Sylvia Duke
Vicky Dunagan
Ken and Mary Lou Dunbar
Jane Durst
Nancy Eagleson
Tom and Mary Eckert
Jackie Eggenstiller
Paul and Barbara Ellefsen
Angela Elles and Denise Kosek
Phyllis Ellinghausen
Brenda Eversole
Sarah Eversole
John Ewing
Joe and Evelyn Ferguson
Amber Finnegan
Brenda Finnegan
George Anne Fisher
Jeff and Anne Fisse and sons
Mike and Cheryl Foley
John and Leslie Ford
Josh and Barb Ford
Andrew and Kendra Forrester
Matt and Andy Forrester
Holly Lanae Forry

Philip and Eileen Fowler
Patti Frazier
Sandy Freeman
Carole Gallatin and family
Mindy Garrett
Jaman Geyman
Donna Godward
Jacob Goering
Tom and Sandy Gold
Robin Goodknight
Amy and Jeff Goodwin
Lisa Gray
Sasha Gray
Natalie Green
Jim and Beulah Greene
Meredith Gregg
Vivian and Ronald Gregory
Mike and Maria Grote
Diane Gruber
Carolyn Gunter
David and Sheridan Hadley
Lynn Hall
Tammy Hall
Susie Hamner
Glenna Hanks Wade
Lisa Hanson
Doug and Tricia Hardin
Michael and Tina Hardy
Sara Hare
Gayle and Jeannine Harrold
Paula Hartman
Raeanna Hearne
Gwen Heaton
Mary Heaton
John and Lori Heitz
Magnolia Heitz
Stephanie Hellmann
James and Mary Henderson
Wilma Henderson
Chuck and Bonnie Hensler
Jennifer Hensler
Michael and Kathy Hensley
Dan and Jean Herron
Angie Hertz
Carol Hertz
Dee Hertz
Katie Hertz
Kelli Hertz
Eric and Tanya Hess
Dianne Hill
Ralph Hirsbrunner
Kelley Hoagland
Bob and Claudia Hoban
Dan and Laura Hodges
Polly Honor

The Women's Giving Circle of Jefferson County finished 2020 with 192 members! From the membership dollars and extra donations collected, \$19,187 in grants were awarded to five nonprofit organizations that serve women and/or children in Jefferson County.

Due to the ongoing COVID-19 pandemic and restrictions on gatherings, the 2020 WGC members were invited to attend an Open House event in lieu of their Annual Dinner on April 13, 2021. Members could vote on accepting the grant recommendations at the event, by mail, or online. The winning organizations and projects:



Jefferson County Youth Shelter - \$3,500 to support the installation of a Koi Pond on the property as a place for residents & staff to relax, for family visitations, for therapy sessions, and as an activity to teach residents responsibility.



La Casa Amiga - \$3,500 to support transportation costs to the center's new location for bilingual story hours and help the organization with recovery from the impact of COVID-19.



Madison Consolidated Jr. High Creative Dramatics - \$3,000 to support the department's spring performance season by covering performance rights, costume needs, and other production elements for the class presentations and all-school musical presentations.



O.V.O. Head Start - \$6,037 to purchase new hearing screening equipment to replace the center's current 10-year-old screening system.



Prince of Peace Catholic Schools - \$3,150 to support the purchase and installation of vinyl wraps on the front doors of Shawe Memorial High School & Pope John Elementary to help reduce visibility into the schools for the safety and privacy of their students and faculty.

Since the Women's Giving Circle's creation in 2012, over \$168,500 has been granted to programs in our community that serve women and children. Thank you to all past and current members for your help in making a difference in Jefferson County!

Angela Hood
Wanda Horine
John and Colleen Hossler
Karen Howard
Martie Hoying
Scott and Michelle Hubbard
Janet Huber Lowry
Charlie and Ruth Ann Hunt
Al and Connie Huntington
Richard Ice
Virgil Imel
Marty Irwin
Dennis and Paula Ison
Amber Jackson
Jim Jackson and Alice Carlson-Jackson
Leah James
Michelle James
Jane Jenner
Joe and Katie Jenner
Mary Grace Jenner
Beth and Monty Johnson
Betsy Johnson
Julia Johnson
Christina Jones
Pamela Jones
Richard and Nancy Jones
Kamaren Kaiser and Alex Luka
Terry Kapfhammer
Tracy Keller
Gary and Sue Kemper
Sara Kimble Keyser
Michelle Kimmel
Chris and Karol Kirk
Linda Kittle
Shirley Kloepfer
Helen Knouf
Stephanie Knox
Fred and Judy Koehler
Penny Koehler
Bob and Mary Kraft
Kim Kreuzburg
Gayle Kring
Catherine Le Saux
Camille and Ryan Leach and family
Bonnie Lee
Melissa Lee-Miller
Heather Leininger
Denise Leiske
Keith and Ellen Levine
Josh and Beth Lichlyter
Maggie Lisle
Bill and Linda Liter

H. Boone Lodge and William Sullivan
Mary Carol Lorton
Max and Belva Lowry
Roger MacDonald
Madison Chemical Company Employees
Christopher Alcorn
Shawn Bennett
Evan Brown
James Bruther
Lyle Campbell
Jeanne Cleary
David Craft
Michael Craig
Jeffrey Croxton
Grace Donnelly
Andrea Dunlap
Jessie Dunlap
Kent Ford
John Garvey, Jr.
Dick Goodman
Derek Gosman
Natalie Green
Crystal Greene
Steven Haines
Jon Hallgarth
Trey Harrett
Markt Heitz
Dan Hodges
Joseph Holcroft
Dean Leatherbury
Phillip Lobb
Jason Monday
Larissa Perry
Stephen Preece
Amber Richards
Michael Roberson
Jim Roberts
Darin Sadler
Amanda Schmidt
Bryon Sego
Rob Sims, Jr.
Joseph Todd
Matthew Todd
William Torline
Megan Ulery
Teresa Waits
Tim Wimsatt
Kim Wright
Caley Mahoney
Ariel Makin
George and Alicia Manek
Allen Manning
Scott and Lynn Maricle
Lonnie Mason

Dan and Susan McCall
Milene McCall
James and Patricia McClain
Mary Jo McClelland
Gil and Trudy McCoy
Marcia McCracken
Mary Kay McCubbin
Mary McCuskey
Chuck and Cindy McKay
Mike and Tammy McKay
Sally McWilliams
Lester and Holly Melton
Lesley Miller
Tina Mitchell
Trudy Mitchell
Mary Beth Mock
Karen Modisett
Carolyn Moore
Mike and Ann Moore
Foster and Susan Morgan
Karen Morgan
Elaine Morrill
Tyler and Stephanie Moser
Michelle Mouser
Thelma Mullett
Sarah Naik
Rodney Nay
Dwight and Anna Nelson
Jill Neuman
Ruby Nichols
Russell and Pat Nichols
Jennifer Nicholson and Vernice Stratton
Bill and June Nighbert
Molly O'Connor
Bill and Susan Ohlendorf
Margo Olson
Charmaine Owens
Sandy Palmer
Donna Parker
Michael and Gwynn Perlich
Meg Perry
Wayne and Debbie Perry
Megan Phillipe
Binnie Phillips
Donald and Veronica Phillips
Gary and Franny Phillips
Bob and Alanagh Pimlott
Gretchen Poindexter
Jamie Prime
Jenny Prime
Alice Rabin
Starla Raley
Reed Rawson
Randy and Celeste Reed

Kimberly Reese
Judy Richardson
Charles and Mary Pat Ricketts
Michael and Sandra Ricketts
Linda Riley
Dr. Ivan Rimstidt Family
Connie Risk
Gloria Risk
Ann Roahrig
Linda Roaks
Susie Robbins
Jim and Alice Rogers
Ann Roller
Annalise Roney
Jennifer Roney
William and Lois Roney
Kathy Rosenberg
Victoria Rosenkranz
Don and Clara Ross
Matt and Anna Rousch
Greg Russell
David and Carmen Ryan
Pam Sandoz
Jason and Marlana Schafer
Vicky Schirmer
Susan Schmidt
Jennifer Schoch
Tony and Annie Schroeder
Lea and Rob Schrupf
Flower Shaffstall
Devon and Rachel Sharpe
Deanna Shelley
Printis Shelton
Libby Sheppard
Jean'ne Shreeve
Pamela Silverman
Gretchen Sizemore
Bill and Judy Skiles
Sam and Linda Sloffer
Happy Smith
Janelle Smith
Cynthia Smoots
Nancy Sobeck
David and Karla Sonksen
Stacie Spencer
Louis Spicer
Nancy Sprunger
Becky Staab
Pat and Sue Stack
Susan Stahl
John and Maureen Staicer
Donald and Sally Staley
Tony and Phyllis Steinhardt
Don Steveley
Kim Stone and family

Steve Strandmark
Bill and Rosemary Sullivan
Traci Tandy
June Taylor
Madelaine Taylor
John Terrill
Sue Thomas
Karen Todd
Jeremy and Jaime Toppe
Priscilla Torline
Nancy Totten
Patty Trimble
Nancy Underwood
Marianne Ungru
Elizabeth Varble
Martha, Joie, Julia, and Donnie Vaughn
Donn Vecchie-Campbell
Jan Vetthus
Betsey Vonderheide
Rychel Vossler
Robert and Chris Wall
Tony and Robin Waltz
Nancy Watson
Julie Wattenbarger
David and Sally Webster
JD Webster
Donna Wehner
Ginny Welch
Donald and Joyce Wells
Julie Wells
Brye and Meghan Welty
Linda Wenning
Scott White
Sharyn Whitman
Jill Wiest
James and Kathy Wildman
Jane Williams
Tony and Letiscia Wilson
Sam Wilson and Pat Modisett
Margie Winegar
Stephanie Withered
Michael and Diane Wright
Sally Wurtz
Autumn Zehren
Pam Zehren

CORPORATIONS & ORGANIZATIONS
AmazonSmile
Amgen Foundation
Auxier Investments Indiana LLP
Bulk Truck and Transport
Century 21 River Valley Real Estate
Disabled American Veterans #55

First Financial Bank
Fountain Holdings, LLC
Friends of Julie Berry
Gardner Insurance Agency
German American Bank
Grote Lamplighter Club
IPAPA
Jefferson County Genealogical Society
Jefferson County Land Title
Jenner Law Office
King's Daughters' Health
Kroger Company
Lanier Mansion Foundation aka Friends of Lanier Mansion
Lee's Locksmith Service
Lilly Endowment Inc.
Lytle Welty Funeral Chapel
Madison Chemical Company
MCHS Class of 1963
Madison Precision Products
Madison Riverfront Development Corporation
Madison Rotary Club
Madison Travel Company
Madison Youth Unlimited
Mane Attractions
McKay Accounting Service
Midwestern Engineers, Inc.
Morgan & Nay Funeral Centre
Pickleball Players
Trilogy Management Services
United Way of Bartholomew County

TRUSTS & ESTATES

Don and George Anne Fisher Trust
Anna and Charles O'Banion Trust

IN MEMORY OF:

Margie Adams
Gary and Sue Kemper
Myrwin "Red" Anderson
Sara Becher and family
Paul and Carole Bratton
Sally Chalian
Marlene Cosby
Ken and Ann DeMoss
Blake and Julie Deuser and family
Hilary Deuser and Scott Hamilton
Nancy Deuser
Tyler and Alinza Deuser and family
Brenda Eversole

George Anne Fisher
Jeff and Anne Fisse and sons
Carole Gallatin and family
Mindy Garrett
Jim and Beulah Greene
Diane Gruber
Wilma Henderson
Eric and Tanya Hess
Ralph Hirsbrunner
Polly Honor
John and Colleen Hossler
Charlie and Ruth Ann Hunt
Al and Connie Huntington
Beth and Monty Johnson
Richard and Nancy Jones
Camille and Ryan Leach and family
Bill and Linda Liter
MCHS Class of 1963
Mary Jo McClelland
Karen Modisett
Dwight and Anna Nelson
Jamie Prime
Jenny Prime
Charles and Mary Pat Ricketts
Michael and Sandra Ricketts
Susanne Robbins
Lea and Rob Schrupf
Pamela Silverman
Sam and Linda Sloffer
Stacie Spencer
Nancy Sprunger
Bill and Rosemary Sullivan
Traci Tandy
June Taylor
Martha, Joie, Julia, and Donnie Vaughn
Tony and Letiscia Wilson
Sam Wilson and Pat Modisett
George Anthony Bilz
Chuck and Bonnie Hensler
Sharon Brown
Julie Brown
Cleve Callis
John and Darleen Connolly
Tom Chilton
Margie Winegar
John Clapham
Dennis and Elizabeth Clark
Art Cleland
Jan Vetthus
Jean Collier
Morgan & Nay Funeral Centre
Tyler Cooley
Lonnie Mason

Dan Deeg
Tony and Phyllis Steinhardt
Maxine Ely
Chuck and Bonnie Hensler
Judy George
Scott and Michelle Hubbard
Mary Elizabeth Geyman
John and Leslie Ford
Dennis and Paula Ison
Gretchen Sizemore
Ann Grah
Jean'ne Shreeve
Dr. Douglas Grah
Keith and Ellen Levine
Nathan Hadley
Tom and Sandy Gold
David and Sheridan Hadley
Bonnie Hare
Sara Hare
Richard Ice
Marty Irwin
Linda Kittle
Happy Smith
James and Kathy Wildman
Norma Heitz
Jim and Carri Dirksen
Dennis Horvath
Bob and Mary Kraft
Golden Hyman
Susie Robbins
Virginia Ingle
Valecia Crisafulli
Bill Jenner
Julia Barber
Michael and Kathy Hensley
William Kaag
Paul and Barbara Ellefsen
Elisha Ellsworth Lowry
Tonya Dilger
James and Patricia McClain
Kathy MacDonald
Michael and Diane Wright
Sarah Jane Mather
Gary and Sue Kemper
Caroline McCauley
Tim and Kim Breeding
Lillian D. McCoskey
Dennis and Elizabeth Clark
Jana Faye Morgan
Chuck and Bonnie Hensler
Walt Morrill
Donna Davis
Bob and Claudia Hoban
Russell and Pat Nichols
Bob and Alanaugh Pimlott

Arlene Moyer

Michael and Diane Wright

Betty Nay

Donna Godward

Mike O'Neal

John and Darleen Connolly

Janis Petscher

The Alcorn Family

David and Nina Alcorn

Richard and Mary Barron

Tim Barron

Courtney Bradley

Marie-Pierre Desaulniers

Angela Elles and Denise Kosek

Phyllis Ellinghausen

Brenda and Sarah Eversole

Jacob Goering

Amy and Jeff Goodwin

Vivian and Ronald Gregory

John and Lori Heitz

James and Mary Henderson

Jenner Law Office

Karmaren Kaiser and

Alex Luka

Sara Kimble Keyser

Karen Morgan

Jennifer Nicholson and

Vernice Stratton

Dr. Ivan Rimstidt Family

William and Lois Roney

David and Carmen Ryan

Janelle Smith

Pat and Sue Stack

John Terrill

Scott White

Renny Rieman

Helen Knouf

Irene Ritter

Jeffery and Sarah Blackwell

Cheryl Campbell

David and Gayla Cheatham

Mark Cheatham

Tom and Mary Davee

Gwen Heaton

Al and Connie Huntington

Amber Jackson

Jenner Law Office

Gayle Kring

Karen Modisett

Mike and Ann Moore

Molly O'Connor

Deanna Shelley

Donald and Sally Staley

Kim Stone and family

June Taylor

Larry Rudolech

Maria Ambrecht

Bill and Stacy Barnes

Debora Carter

Mark Cheatham

Linda and Cleffman

Trevor Crafton

Tom and Mary Eckert

Michael and Tina Hardy

IPAPA

Max and Belva Lowry

George and Alicia Manek

Scott and Lynn Maricle

Mike and Tammy McKay

Morgan & Nay Funeral Centre

Wayne and Debbie Perry

Matt and Anna Rousch

Don Steveley

Rychel Vossler

Louise and Cas Rutkowski

Bob and Mary Kraft

Brenda Scroggins

John and Darleen Connolly

David Sebree

Donna Dougan

Gayle and Jeannine Harrold

Virgil Imel

Dwight and Anna Nelson

June Taylor

Margaret Seifert-Russell

Bill and Stacy Barnes

Jim and Carri Dirksen

Beth Ann Senatore

Chuck and Bonnie Hensler

Peggy Shine

Meg Perry

Kimberley Slade

Jenner Law Office

H. Irene Niccum Spicer

Louis Spicer

Bill and Norma Cull Stiver

Alice Rabin

Gene Stockdale

Scott and Michelle Hubbard

Lonnie Mason

Nancy Strandmark

Tom Bruner

Cindi Sullivan

Bob and Mary Kraft

Clifford O. Taylor

June Taylor

Raymond Vaughn

Chuck and Bonnie Hensler

Mayor Damon Welch

Mark and Tammy Acosta

Drew and Megan Admiraal

Rick Berry

Gretchen Blake

Priscilla Branham

Tim and Erixana Brooks

Julie Cain

Monty and Sharon Clevenger

Johnny, Mandy, and

Braeden Collins

John and Darleen Connolly

Bob and Tammy Courtney

Mary Beth Cullens

Abigail Douglass

Brenda Eversole

John Ewing

Amber Finnegan

Andrew and Kendra Forrester

Matt and Andy Forrester

Holly Lanae Fory

Philip and Eileen Fowler

Dan and Laura Hodges

Angela Hood

Wanda Horine

Michelle James

Beth and Monty Johnson

Bonnie Lee

Lester and Holly Melton

Carolyn Moore

Foster and Susan Morgan

Tyler and Stephanie Moser

Sarah Naik

Rodney Nay

Bil and Susan Ohlendorf

Gary and Franny Phillips

Randy and Celeste Reed

Linda Riley

Bill and Judy Skiles

Sam and Linda Sloffer

David and Karla Sonksen

Ginny Welch

Brye and Meghan Welty

Ruth Young

Roger MacDonald

Michael and Diane Wright

IN HONOR OF:**Gaeli Batts**

Abigail Douglass

Janet Castor

Jefferson County Land Title

Clifty Tire

Paul and Cherri Cronen

Kirsty Welch Henderson

Michelle James

Caroline Huber and Chase Horton

Elizabeth Auxier and

Chuck Requet

Kent Water Company

Midwestern Engineers, Inc.

Lou Knoble

Mike and Melissa Andrew

Bill and Stacy Barnes

Jim Crone

Don and George Anne Fisher

Trust

Jon and Katie Louis

Dan and Susan McCall

Madison Port Authority

Midwestern Engineers, Inc.

Larry and Charmaine Owens

Michael and Gwynn Perlich

Robert Gene Slade

Jenner Law Office

Stucker Fork**Conservancy District**

Midwestern Engineers, Inc.

Town of Hanover

Midwestern Engineers, Inc.

Bob Trimble

David and Lisa Actor

The Welch Family

Sarah Naik

Since its creation in 1991, the Community Foundation of Madison and Jefferson County has invested nearly \$14 million back into Jefferson County through grants and scholarships. In 2020, the Community Foundation granted a total of \$880,976 from its endowments, with over \$310,000 of that total coming from Flexible Community Funds and Field of Interest Funds.

“This year unfolded in a way no one expected,” said CFMJC President & CEO Bill Barnes. “Thanks to donors who have supported us at various times in our 29-year history, we were able to commit \$100,000 from our Flexible Community Funds toward helping nonprofits with their COVID-19 relief efforts earlier in the year. In light of this, we’re pleased to still be able to award over \$127,500 to nonprofits through

Organizations that received grant funding included:

Children’s Advocacy Center — \$4,504

to purchase office equipment to expand and improve the Jefferson County satellite office

Developmental Services, Inc. — \$800

to assist intellectually challenged children in Jefferson County

Canaan Community Academy — \$7,049

to create the Canaan LandLab outdoor space for use by the school and community

Heritage Trail Conservancy — \$19,000

to purchase land at the foot of Vernon Street and Vaughn Drive to complete the Heritage Park project

Hoosier Trails Council/Boy Scouts of Am. — \$750

to allow Jefferson County scouts to participate in the Environment Education and Stewardship Campaign

Jefferson County House of Hope, Inc. — \$10,000

to support the Back-Sack Project to provide weekend food to food-insecure students

KDH Foundation — \$3,400

to purchase drug deactivation disposal pouches for the Project HOPE (Help Our People) Save a Life drug disposal program

Madison Music Movement — \$8,900

to purchase portable sound equipment and staging for the Music in the Streets project

Madison Riverfront Development Corp. — \$25,000

to support the creation of the Madison Super Overlook Regatta Judges’ Stand

Oak Heritage Conservancy — \$9,280

to expand the trails and control invasive species at Webster Woods Nature Preserve in Hanover

River Valley Resources — \$6,489

to upgrade technology at the Clearinghouse to better serve clients

Salvation Army-Madison Citadel — \$17,382

to upgrade the organization’s facility with LED lighting fixtures

Southwestern Elementary School — \$7,175

to support the Building Strong Teacher/Student Relationships program

Town of Hanover — \$7,772

to support the renovation of the amphitheater at Hanover Park

our competitive grant cycle.” More information on our COVID-19 Rapid Response Grant Program award recipients can be found on page 2-3.

Because the Foundation was unable to hold its annual Competitive Grant Cycle Award Reception, representatives of each award recipient stopped by the Community Foundation office to accept their grant and have a photo taken.

To be considered for funding through the annual Competitive Grant Cycle, local nonprofit agencies submitted an online application. Selected finalists were then emailed any additional questions from members of the Foundation’s Grants Committee to learn more about the organizations, their projects, and their goals.

The 2020 Competitive Grants Cycle awards were made possible by the following Community Foundation’s Flexible Community Funds and Field of Interest Endowment Funds:

- Gerald E. Amos Memorial Endowment Fund
- Eleanor T. Birk Foundation Youth Fund
- Community Endowment for the Arts
- Community Foundation Board Member & Alumni Fund
- Barbara Ann Cowan Memorial Fund
- Cronen/Marsiglio Family Unrestricted Endowment
- First Financial Bank Community Fund
- Gardner Insurance Agency Community Fund
- The Douglas & Ann Grahn Endowment
- Walter A. & Jean Graham Greiner Memorial Fund
- Hanover Fund for Youth
- Al & Connie Huntington Family Community Fund
- Jefferson County Enrichment Endowment
- Frieda Suppes Jones/John Price Jones Memorial Fund
- The Lineburg Family Endowment
- Madison Precision Products Community Fund
- Gil & Trudy McCoy Unrestricted Endowment
- The John Morgan Family Fund
- Rinda Rains Memorial Endowment
- Julius “Bud” & Irene Ritter Memorial Endowment
- Margaret Francis Seifert and Gregory A. Russell Endowment
- Nancy J. Strandmark Memorial Fund
- Ann Suchocki & Jim Mason Family Fund
- Tribute and Memorial Fund
- Vehicle Service Group Employee Fund
- George Wagoner, MD & Marjorie Jefferies Wagoner, MD Fund
- Robert E. Wall DDS Fund
- Don R. Wallis Memorial Fund

2020 Grant Recipients



Hoosier Trails Council/
Boy Scouts of America –
District Executive Scott Mytyk



Canaan Community Academy –
Principal Rhonda Pennington



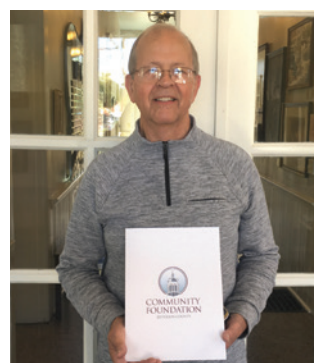
Children's Advocacy Center –
Child & Family Advocate
Cindi Wagner



Healthy Communities Initiative-
Coordinator Keith Howard



Heritage Trail –
Executive Director Bob Greene



House of Hope –
Treasurer John Bush



Madison Riverfront
Development Corp.-
Vice President John Bruns



Oak Heritage Conservancy –
Treasurer Sharon Bevis



River Valley Resources –
Executive Director Margo Olson
& Director of Operations
Brad Wood



Salvation Army –
Captain Justin Hartley



Southwestern Elem. –
Assistant Principal
Krista Chatham



Town of Hanover –
Board member Debbie Kroger

SUPPORTING OUR SCHOOLS



Southwestern High School's Varsity Baseball program received a grant in 2018 to renovate their baseball field. This grant helped to install field improvements including the pictured turf halo around home plate. (Photos courtesy of Southwestern High School Athletics)



In 2019, the Community Foundation provided a grant to the Madison Consolidated High School Athletic department to motorize the flag displayed in the Connor K. Salm Gymnasium. (Photo courtesy of Madison Consolidated Schools)

HONORING A LOCAL ARTS EDUCATION LEGEND



On Saturday February 1, 2020, Mr. Lou Knoble was honored for his contributions to the Madison community at the Connor K. Salm Gymnasium of Madison Consolidated High School (MCHS) to a full house at a home Boys' Varsity Basketball game. Knoble spent many years as an art teacher at MCHS, coached cross country at MCHS and Hanover College, and is a notable

artist in Southern Indiana. To recognize these important contributions, the Community Foundation of Madison and Jefferson County donated an original Lou Knoble painting to the MCHS Fine Arts Academy, so students today and the students of tomorrow can see Knoble's incredible talent and know of his contributions.

CFMJC Marketing & Donor Relations Manager Kelley Hoagland (far left) presents *Chicago Jam Session*, an original painting by former MCHS art teacher and coach Lou Knoble (second from right), to the MCHS Fine Arts Academy. Accepting the painting are (from left) Fine Arts Academy Students Emily Ward and Dillon Miller, and MCHS Fine Arts Academy Director Aaron Kelsey. (Photo courtesy of Nina Campbell Photography)

In addition to presenting the artwork, the Community Foundation announced that Lou's friends, family, and members of the community established the Lou Knoble Gift of Art Fund in his honor. Annual grants from this fund will be made to the MCHS Fine Arts Academy to support art enrichment experiences and special programs for the students.



CFMJC Program Associate Julie Wells presents Jefferson County Animal Shelter employee Chelsea Griffin with copies of *Tails Are Not for Pulling*, that will be given to families adopting a new pet.

SPIRIT'S FUND

After encountering a severely abused dog in 2004, Alice Carlson-Jackson started Spirit's Fund to promote and support animal welfare in Jefferson County. Grant dollars from this Field of Interest Fund were used in 2020 to focus on young children learning to become responsible pet owners. Copies of the book *Tails Are Not for Pulling* were donated to the Madison-Jefferson County Animal Shelter to be distributed to families adopting a pet. Additional sets of books from the ASPCA Pet Rescue Club series, focusing on the appropriate treatment of animals, were donated to the libraries of



local elementary schools. All of the books distributed included a sticker that shared information about Spirit's Fund, with a picture of Spirit and Alice. Through the gift of these books and this fund, Spirit's story will live on to encourage the proper care of our four-legged friends!

MUSIC ON THE MOVE



The Madison Music Movement (M3) received a grant in 2020 to purchase portable staging and sound equipment to use at various locations in the community for pop-up concerts. The organization began hosting the "Friday Live Lunch" Concert Series at Lytle Park, right across the street from the Community Foundation, during the Summer of 2020 to promote local artists and provide a fun, socially distanced event.

2020 LILLY ENDOWMENT COMMUNITY SCHOLARSHIP RECIPIENT

As the 2020 Lilly Endowment Community Scholar, Madison Consolidated High School graduate Luka Chabukashvili received a four-year, full-tuition scholarship and \$900 yearly stipend for required books and equipment. Luka is the son of David and Natia Chabukashvili of Madison. He currently attends Indiana University – Bloomington and is pursuing a degree in Pre-Med/Biology.

“I am so blessed to have received this award from the Community Foundation and Lilly Endowment Inc.,” Luka said. “It is a truly life changing award and I am blessed to be amongst a talented group of students,” he remarked referring to the other finalists selected during the scholarship process. “I’m so thankful for my teachers, friends, and family that have supported me on my academic journey. It means the world and I can’t express my gratitude enough.”

Including Luka, the six finalists (and their schools) of the 2020 Lilly Endowment Community Scholarship were: Isaac Boone (Madison), Jessie Dyer (Madison), Madelynn Jacobs (Southwestern), Nathaniel Pawlak (Shawe Memorial), and Harper Watson (Madison). Boone, Dyer, Jacobs, Pawlak, and Watson each received a \$1,000 Community Foundation Scholar Award for being named a finalist.

The scholarships are the result of a statewide Lilly Endowment, Inc. initiative to help Hoosier students reach higher levels of education. Including the 23rd cohort, 4,769 full-tuition scholarships have been awarded, and over \$405 million in scholarship tuition has been provided since the program’s inception in 1998.



2020 Scholarship Recipients

Karsyn Bailey

Madison Consolidated High School

- Tiffany Lee Carter Memorial Scholarship

Julianna Bell

Southwestern High School

- Lisa Cheatham Memorial Scholarship

Logan Birchfield

Southwestern High School

- Bill Oldaker Scholarship (Madison Rotary Club)
- CAM Car Club Scholarship

Sara Boltz

Madison, IN

- Carolyn Bruce Spicer and Gene E. Spicer Nursing Scholarship (Adult)

Isaac Boone

Madison Consolidated High School

- Community Foundation Scholar Award
- Dorothy B. Lotz Scholarship

Shahala Brown

Southwestern High School

- Mary Elizabeth Patterson Memorial Scholarship

Morgan Cahall

Madison Consolidated High School

- Calvin Family Scholarship
- Dennis Holt Memorial Scholarship
- Dupont Alumni Scholarship

Kalin Campbell

New Washington High School

- Christie Crafton Memorial Scholarship

Luka Chabukashvili

Madison Consolidated High School

- Lilly Endowment Community Scholar

Edward Cleary

Southwestern High School

- Marcia S. Morrill Memorial Scholarship (Madison Rotary Club)
- Ralph and Robin Jones Family Memorial Scholarship

Mitchell Cline

Southwestern High School

- Keith Brooks Memorial Scholarship

Adam Combs

Madison Consolidated High School

- Chan Chilton Memorial Scholarship

Kristin Consley

Southwestern High School

- Christie Crafton Memorial Scholarship

Alayna Cox

Madison Consolidated High School

- Ralph and Robin Jones Family Memorial Scholarship

Kelly Wen Dong

Madison Consolidated High School

- Dorothy B. Lotz Scholarship

Jessie Dyer

Madison Consolidated High School

- Community Foundation Scholar Award
- Francis K. Eisan Memorial Scholarship
- Mabel Green Memorial Scholarship
- MCHS Class of 1966 Scholarship

Maddie Felts

Madison Consolidated High School

- The Wood Memorial Scholarship

Jared Ferguson

Madison Consolidated High School

- Dupont Alumni Scholarship

Anne Grady

Madison Consolidated High School

- Bonnie and Printis Shelton Scholarship
- Curtis Wright Memorial Scholarship

Bailey Hankins

Madison Consolidated High School

- Carolyn Bruce Spicer and Gene E. Spicer Nursing Scholarship
- Terri Nighbert Memorial Scholarship

Elias Hanson

Madison Consolidated High School

- Helyn Bishop Scholarship
- Nathan Wilson Memorial Mathematics Scholarship

Annemarie Hassfurther

Madison Consolidated High School

- Deputy Alumni Scholarship
- Jefferson County 4-H Scholarship

Britta Hess

Madison Consolidated High School

- Madison Chautauqua Scholarship for the Arts in Memory of Bob Fourham

Rachael Hoffman

Madison Consolidated High School

- Troy Allen Pyles Memorial Scholarship

Connor Jacobs

Madison Consolidated High School

- Larry and Charmaine Owens Scholarship (Madison Rotary Club)
- M. W. Anderson Scholarship

Madelynn Jacobs

Southwestern High School

- Community Foundation Scholar Award
- Dale McNeely Scholarship
- Madison Kiwanis/Connor K. Salm Scholarship

Vanina Kelsey

Madison Consolidated High School

- Erin Turner Memorial Scholarship
- George and June Miller Memorial Scholarship

Haniah Kring

Home School

- Jefferson County 4-H Scholarship

Abigail Moore

Madison Consolidated High School

- Charles H. and C. Chris Keller Scholarship

Jonah Nichols

Madison Consolidated High School

- Brad O’Leary Scholarship
- Mabel Green Memorial Scholarship
- MCHS Class of ’84 Scholarship

Hannah Owen

Madison Consolidated High School

- Glenn G. & Dorothy Ebel Huntington Memorial Scholarship
- Sharon T. Alcorn Memorial Scholarship

Nathaniel Pawlak

Shawe Memorial High School

- Community Foundation Scholar Award

Abigail Phillips

Madison Consolidated High School

- George and June Kirk Scholarship
- Jefferson County 4-H Scholarship

Briseida Reyes-Miranda

Shawe Memorial High School

- Father Hilary G. Meny Scholarship

Lucas Riley

Southwestern High School

- Dupont Alumni Scholarship

Lauren Ross

Southwestern High School

- J. Michael Sample Memorial Scholarship for Music

Emily Skirvin

Madison Consolidated High School

- Lynn A. Maricle Music Scholarship

Trevor Smith

Southwestern High School

- Brian W. Stites Memorial Scholarship

Jessica Stuart

Shawe Memorial High School

- Hall Family Scholarship

Dustin Trapp

Home School

- Jefferson County 4-H Scholarship

Matthew Ward

Madison Consolidated High School

- Thomas D. Craft, Jr. Memorial Scholarship

Harper Watson

Madison Consolidated High School

- Broadway School Alumni Scholarship
- Community Foundation Scholar Award
- Joseph V. Cline Scholarship

Clare Wilber

Madison Consolidated High School

- Carl J. and Mary M. Hoeffling Memorial Scholarship (Pilot Club of Madison)

Program Associate Julie Wells prepared scholarship award letters for the Class of 2020 while masked up and social distancing in the CFMJC office.



2020 BOARD OF DIRECTORS:

Ben Foley
Chair

Lynn Maricle
Vice Chair

Stephanie Withered
Treasurer

Ann Schwartz
Secretary

Todd Bruther
Jaman Geyman
Scott Hubbard
Beth Lichlyter
Betsey Vonderheide
JD Webster

STAFF:

Bill Barnes
President & CEO
Kelly Miller
Finance & Program Officer
Kelley Hoagland
Marketing & Donor Relations Manager
Julie Wells
Program Associate

2020 BOARD OF DIRECTORS



Ben Foley



Lynn Maricle



Stephanie Withered



Ann Schwartz



Todd Bruther



Jaman Geyman



Scott Hubbard



Beth Lichlyter



Betsy Vonderheide



JD Webster

STAFF



Bill Barnes



Kelly Miller



Kelley Hoagland



Julie Wells

OTHER COMMUNITY VOLUNTEERS:

Elizabeth Auxier
Rob Barlow
Marta Belt
Lindsay Bloos
Nadja Boone
Anthony Brandon
Kim Brant
Jim Braun
Launa Braun
Tim Breeding
Kathy Crafton
Ashley Cunningham
Missy Demaree
Carrie Dickerson
Laurie Dorsey
Chelsea Dugle
Tamara Hall
Jennifer Hensler
Jean Herron
Keith Howard
Al Huntington
Leah James
Julia Johnson
Shareen Kring
Janie Mahoney
Steve Meacham
Angela Miller
John Nyberg
Margo Olson
Don Phillips
John Podczewinski
Starla Raley
Ron Roaks
Fernando Rubio
Pam Sandoz
Lori Slygh
Janelle Smith
JoAnne Spiller
Sue Stack
Tawana Thomas
Nancy Totten
Larry Truax
Donna Wehner
Joyce Wells
Josh Wilber
Jane Williams

PAST BOARD MEMBERS (YEARS OF SERVICE):

Roger Allman (1999-2003)	Sue Kittinger (2002)
Mike Armstrong (1997-2003)	Fred Koehler (2003-2008)
Darrell Auxier (1992-1996)	Lillian Sue Livers (1995-1999)
Dan Baughman (2000-2006)	Donald McCauley (2002-2007)
Nancy Bear (2007)	Chuck McKay (2009-2014)
Anthony Brandon (2011-2017)	Gerry Michl (2003-2006)
Jim Braun (2004-2009)	Marcella Modisett, MD (1995-2000)
Timothy Breeding (2005-2010)	Sarah Morgan (1995-2001)
Ben Canida (2012-2015)	Bernard Murphy (1995-1997)
Cliff Carnes (2012-2015)	James C. Pendleton (1993-1997)
Janet E. Castor (2000-2002)	Eric Phagan (2013-2016)
Lonnie Collins (2000-2006)	Donald L. Phillips (1995-2000)
Darleen Connolly (2012-2018)	Dr. Ralph Pratt (1991-1993)
David J. Craig (1991-1997)	Dotti Reindollar (1991-1994)
Tom Davee (1996-2002)	Ivan Rimstidt, D.V.M. (1993-1999)
Carri Dirksen (2010-2016)	Howard Risk (1997-2000)
Mike Dorsey (2000-2006)	Michael Robinson (2008-2014)
Cecil Dorten (1991-1994)	Bruce Rose (1993-1995)
Brenda Eversole (1991-1996)	Tim Sandker (1996-2000)
Gregory K. Flood (1991-1993)	Rhonda Sauley (1994-1998)
Matt Forrester (2000-2006)	Susan Schmidt (2008-2011)
Virginia Franks (1996-2000)	Ashley Schutte (2007-2013)
Sam George (1997-2000)	E. Perin Scott (1991-1996)
Robin Goodknight (2015-2018)	Wendell Seaborne (1998-2000)
Constance M. Goodman (2000-2006)	Betty L. Sebree (2001-2007)
Ann Grahn (1991-1997)	Margaret Seifert-Russell (2011-2017)
Terry Grote (1996-2002)	Phil Sherman (1991-1998)
Walter F. Grote, Jr. (1991-1994)	Tom Solomon (2006-2012)
Thomas V. Hambrick (1991-1993)	Susan Stack (2006-2012)
Bonnie Hare (2010-2016)	Ann Suchocki (2014-2020)
William H. Hensler (2001-2007)	Rich Sutter (1998-2000)
Robert D. Hoban (1991-1998)	Steve Telfer (2013-2018)
Kathleen Huffman (2005-2009)	Barbara Trimble (1991-1995)
Al Huntington (2011-2017)	Nancy Underwood (1999-2005)
Alice Jackson (2004-2009)	Donn Vecchie-Campbell (2011-2013)
Curt Jacobs (1998-2004)	Tony Waltz (1999-2005)
Jane W. Jacobs (1991-1998)	Josh Wilber (2016-2018)
Jane Jakoubek (2004-2006)	Roger Williams (2008-2010)
Joe Jenner (2014-2020)	Mark Wynn (2006-2011)
Kris W. Kindelsperger (1991-1998)	

CONSOLIDATED STATEMENTS OF FINANCIAL POSITION

ASSETS

	2020	2019
Cash and cash equivalents	\$ 912,954	\$ 772,826
Investments	29,186,680	27,289,350
Other assets	353	2,013
Property and equipment, net	248,230	253,135
	<u>\$ 30,348,217</u>	<u>\$ 28,317,324</u>

LIABILITIES AND NET ASSETS

	2020	2019
Liabilities		
Accounts payable	\$12,445	\$8,967
Grants Payable	8,400	19,000
Charitable gift annuities	16,905	17,812
Custodial funds	1,009,858	916,860
Total liabilities	<u>1,047,618</u>	<u>962,639</u>
Net Assets		
Without donor restrictions		
Operating	459,669	440,690
Board Designated	100,000	-
Board Designated Admin. Endowment	187,889	180,037
Total without donor restrictions	<u>747,558</u>	<u>620,727</u>
With donor restrictions		
Restricted for specified purpose	429,930	429,443
Restricted in perpetuity endowment	19,934,699	19,449,537
Restricted subject to the Organization's spending policy	8,188,412	6,833,978
Total with donor restrictions	<u>28,553,041</u>	<u>26,733,958</u>
Total net assets	<u>\$30,348,217</u>	<u>\$28,317,324</u>

FUNDS

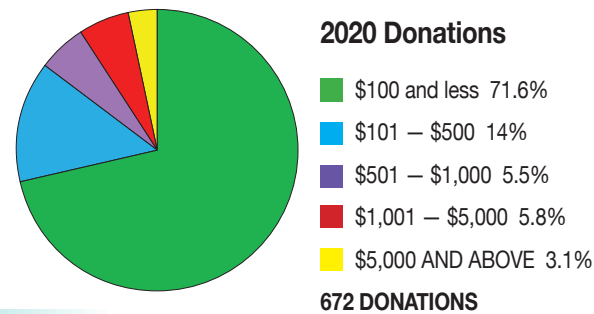
Fund Balance

Endowment Funds by Type:	
Donor Advised	\$5,424,004
Acorn	18,572
Designated	8,754,596
Field of Interest	841,984
Scholarships	4,483,167
Board Advised	8,943,408
Agency	785,651
	<u>\$29,251,382</u>

GRANTS

Grant Amt # Avg. Grant Amt

Grants by Fund Type:			
Donor Advised	\$ 217,723.00	126	\$1,727.96
Acorn	-	-	-
Designated	264,225.00	84	3,145.54
Field of Interest	124,480.00	34	3,661.18
Scholarships	151,700.00	69	2,198.55
Board Advised	113,301.00	56	2,023.23
Agency	9,700.00	10	970.00
	<u>\$ 881,129.00</u>	<u>379</u>	<u>\$ 2,324.88</u>



CONSOLIDATED STATEMENT OF ACTIVITIES

Support, revenues and other

	2020			2019
	Without Donor Restrictions	With Donor Restrictions	Total	Total
Contributions	\$106,000	\$663,626	\$769,626	\$964,461
Change in value of charitable gift annuities	-	(1,839)	(1,839)	(1,862)
Investment return, net	32,777	2,483,284	2,516,061	4,583,090
Management fees	316,423	-	316,423	317,072
Other revenues	8,084	-	8,084	12,121
Net assets released from restrictions	1,325,988	(1,325,988)	-	-
Total support, revenues and other	\$1,789,272	\$1,819,083	\$3,608,355	\$5,874,882

Expenses

Program services	1,334,241	-	1,334,241	1,286,681
Management & general	183,145	-	183,145	162,087
Fundraising & development	145,055	-	145,055	109,219
Total expenses	<u>1,662,441</u>	<u>-</u>	<u>1,662,441</u>	<u>1,557,987</u>
Change in net assets	126,831	1,819,083	1,945,914	4,316,895
Net assets, beginning of year	<u>620,727</u>	<u>26,733,958</u>	<u>27,354,685</u>	<u>23,037,790</u>
Net assets, end of year	<u>\$747,558</u>	<u>\$28,553,041</u>	<u>\$29,300,599</u>	<u>\$27,354,585</u>

CPAS / ADVISORS



COMMUNITY
FOUNDATION
JEFFERSON COUNTY

P.O. Box 306
Madison, IN 47250-0306

Nonprofit Org.
U.S. Postage
PAID
Madison, IN
Permit No. 5007

The Community Foundation of Madison and Jefferson County is pleased to provide this annual report as part of our commitment to honoring philanthropy. You will find within these pages the names of donors who are impacting our community through their generous gifts. You will see how the Foundation supports projects that improve the quality of life in Jefferson County. You will find names of friends and neighbors who have been memorialized or honored by meaningful gifts. You will meet students attending college with help from our scholarships. And you will find financial information as we strive to provide transparency in the stewardship of our gifts. We hope you enjoy reading this report, and we invite you to share it with friends and family after you have read it.

**Community Foundation
of Madison & Jefferson County**

P.O. Box 306
416 West St., Suite B
Madison, IN 47250-0306
812-265-3327
Fax: 812-273-0181
info@cfmjc.org



facebook.com/cfmjc

Confirmed in Compliance with
Indiana and National Standards
for U.S. Community Foundations



Excellence. Accountability. Impact.™



cfmjc.org