

the Art of Giving

Annual Report 2023



COMMUNITY
FOUNDATION
JEFFERSON COUNTY

Dear Friends,

The value and power of *relationships* were evident for us in 2023. Because of what we do for the community, with the help of our generous donors, we were able to foster our ongoing relationships with local governments, the Bethany Legacy Foundation, and our communities at-large to create lasting impacts for Jefferson County’s residents.

Throughout the pages of this Annual Report, you will see examples of these relationships:

- Our generous donor family (pages 19-25) and six new endowments created in 2023 (pages 3-6)
- A donor who used the Required Minimum Distribution (RMD) of her hard-earned Individual Retirement Account (IRA) to establish a fund for a cause near to her heart (pages 17-18)
- Many nonprofit organizations touched by competitive grants (pages 30-36), including our grant collaboration with the Women’s Giving Circle and Bethany Legacy Foundation for the Dupont Playground and Park (page 34)
- The next generation of leaders with the Leadership Jefferson County program (pages 27-29) and scholarships to 41 local high school graduates (pages 45-44)
- Local community members volunteering their time to give back to Jefferson County through service on our Board of Directors and various committees (pages 45-48)

Working together to better Jefferson County is the heartbeat of the Community Foundation. We love what we do for our residents and are so glad that YOU are a part of this work, too!

Sincerely,

JD Webster
Chair



Bill Barnes
President & CEO



03

New Funds

07

Community Foundation
Endowments

15

The Legacy Society

17

Really Magnificent Donation

19

Foundation Donors

27

Leadership Jefferson County

30

Grants

37

Women’s Giving Circle

41

Scholarship Recipients

45

Board and Staff

49

Financials

- 2023 - NEW FUNDS

In 2023, the Community Foundation had 6 new endowments established. Read on to find out more about our different endowment types and about the donors who established these new funds.

"The Judge" | Frank Whitlock

- Designated Funds -

Designated Funds provide donors the ability to create a steady stream of income for one or more specific charities – forever. The minimum amount to establish a Designated Fund is \$5,000.



Jane's Kids Endowment

Jane's Kids, a program at River Valley Resources, provides financial assistance to families for children's summer activities.

Bethany Legacy Foundation (BLF) established the Jane's Kids Endowment to provide perpetual funding for the program, as providing safe, fun, and engaging activities for local youth aligns with BLF's mission of making Jefferson County the "healthiest place in the world." Annual grants from this Designated Endowment will be made to the Jane's Kids Program so they can continue to provide access to summer programs for our youngest residents.

Habitat for Humanity of Southeast Indiana Endowment

Everyone deserves a decent place to live. The dream of homeownership is challenging for many of our area residents. With help from Habitat for Humanity of Southeast Indiana, some can unlock that dream. Local Habitat supporters have established this Designated Endowment to help provide a perpetual stream of income to aid their vision of providing safe, decent, and affordable housing. Each year, grants from this fund will be made to Habitat for Humanity of Southeast Indiana to provide perpetual support to the organization's mission.



- Donor Advised Funds -

Donor Advised Funds allow donors to recommend the charitable organizations that benefit from the fund's annual distribution. Donor Advised Funds are a cost-effective and efficient alternative to a private or family foundation. The minimum amount to establish a Donor Advised Fund is \$5,000.



Alex Feltner Memorial Endowment

Teresa Waller established this Donor Advised Fund to remember her late son, Alex Feltner. Alex was born in 1993 in Madison and graduated from Shawe Memorial High School in 2012. He was attending Ivy Tech in Bloomington, Indiana. Alex was a steadfast and supportive friend and a loving son. He enjoyed computer gaming, live music, and appreciated art and nature. Each year, Teresa will select the organizations and projects to benefit from the fund's grant dollars, including those that she cares about as well as those that were important to Alex.

- Field of Interest Funds -

Field of Interest Funds provide support to a donor's particular area of interest. The Community Foundation staff, Grants Committee, and Board of Directors identify projects that elevate and support these specialized interests. The minimum amount to establish a Field of Interest Fund is \$5,000.

Hanover Community Endowment

The Community Foundation's Board of Directors established this Field of Interest Fund to support programs and projects in Hanover, Indiana, in recognition of the activity, development, and energy within the town. The CFMJC Board of Directors wanted to provide a vehicle to sustain the great work being done now through perpetual financial resources for generations to come. Annual grants from this endowment will be awarded as part of the Foundation's competitive grant cycle in response to applications from nonprofit organizations serving Hanover.

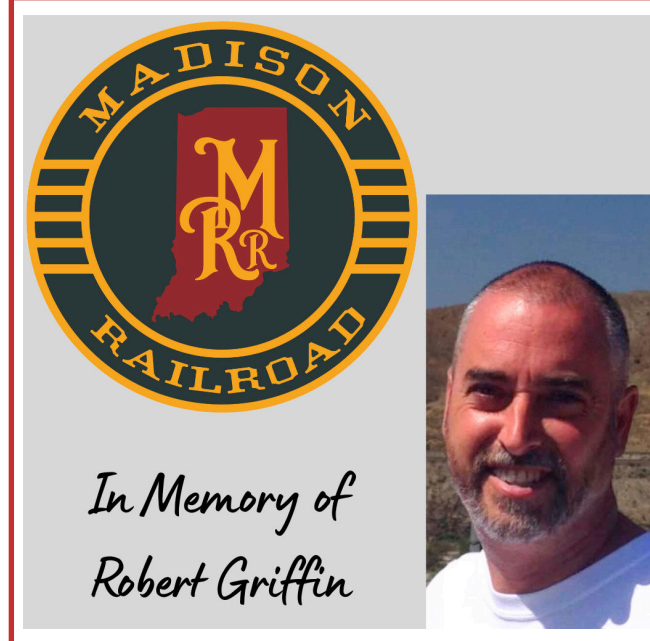


- Scholarship Funds -

Scholarship Funds support local students pursuing their academic goals following high school. The minimum amount to establish a scholarship fund is \$20,000.

Madison Railroad Scholarship in Memory of Robert Griffin

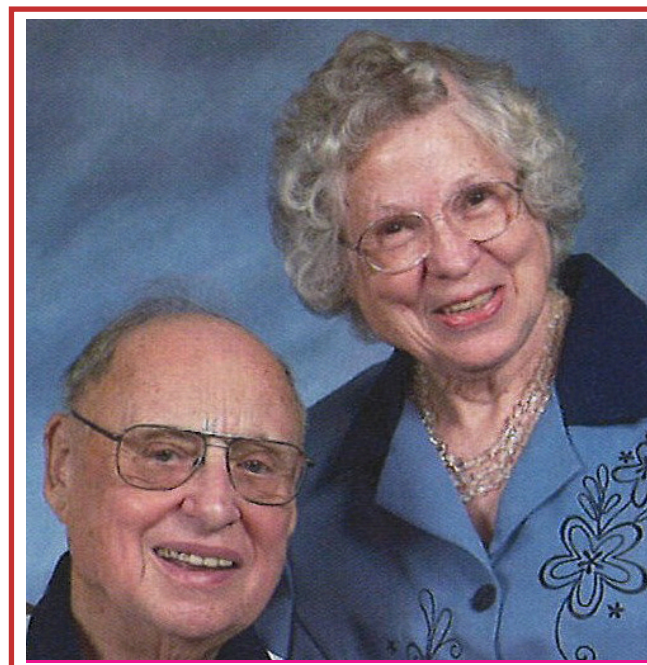
Robert Griffin was a long-time and dedicated team member of the Madison Railroad. To honor his memory and his hard-working spirit, the Madison Railroad established this Scholarship Fund. Each year, this scholarship will be awarded to a graduating senior of any accredited Jefferson County or Jennings County high school planning to attend a two-year college, vocational, trade school, or apprenticeship program to pursue their education in the industrial or mechanical trades.



*In Memory of
Robert Griffin*

Meyers-Hoefling Memorial Scholarship

Following her passing in 2023, Edna Meyers established this Scholarship Fund through her estate. She wanted to leave a legacy that would remember her and her husband, William Meyers, along with William's sister and brother-in-law, Mary and Carl Hoefling. Each year, this scholarship will be awarded to a Jefferson County high school senior wishing to continue their education at a college, university, vocational, or trade school.



In addition to the funds previously mentioned, we offer **Agency Funds** and **Flexible Community Funds**. **Agency Funds** provide an avenue for nonprofit organizations to invest their own money and create a perpetual stream of support for their mission. The minimum amount to establish an **Agency Fund** is \$5,000.

Flexible Community Funds give the Community Foundation the flexibility to assist nonprofits annually through grants. Through these funds, donors create a lasting legacy to fulfill the ever-changing needs and dreams of the people of Jefferson County. The minimum amount to establish a **Flexible Community Fund** is \$5,000.



Community Foundation - ENDOWMENTS -

The funds listed to the right demonstrate what a wide variety of interests people have. Each of them is established with a fund agreement, which directs how the donor wants grants used now and far into the future. The endowments are pooled for investment purposes but accounted for separately. Anyone can add to any fund at any time in any amount. What interests you? For more information about each fund, visit our website at www.cfmjc.org/funds.

"Autumn on Ford Road" | Kevin Carlson

- Area of Interest -

Animals

- Jerry E. Andress Memorial Animal Shelter Endowment (2008)
- Community Spay/Neuter Fund (2011)
- Friends of the Jefferson County Animal Shelter (2008)
- Jefferson County Animal Welfare Fund Endowment (2017)
- Madison-Jefferson County Humane Society, Inc. Audrey M. Smith Chapter Fund (1994)
- Spirit's Fund (animal welfare) (2004)

The Arts

- Community Endowment for the Arts (1996)
- Harold A. "Hal" Davis Memorial Endowment for the Arts (2017)
- Madison Area Arts Alliance Endowment (2018)
- Jonathon D. Menke Memorial Endowment for the MCHS Theatre Dept. (2008)
- Ohio Theatre Endowment (2021)
- Neida Rogers Memorial Endowment for Music (2008)

Community & Social Services

- Clearinghouse of Jefferson County Endowment Fund (2014)
- Greg Cloud Memorial Endowment (fire companies) (2007)
- Community Foundation Administrative Fund (1996)
- Deputy Volunteer Fire Company Endowment (2019)
- James T. and Jennie P. Ford Endowment for the Kent Volunteer Fire Co. (1997)
- Friends of the Madison-Jefferson County Public Library Endowment (2015)

- Habitat for Humanity of Southeast Indiana Endowment (2023)
- Hanover Community Endowment (2023)
- Richard Tevis Heck/Ruth Irwin Heck Fund for the Hanover Volunteer Fire Co. (1997)
- Historic Hoosier Hills RC&D Endowment Fund (1995)
- Jefferson County House of Hope Endowment in Memory of Patty Cooper (2016)
- Ladies' Auxiliary of Kent Fire Department Endowment Fund (1996)
- Madison Main Street Program Endowment (2022)
- Retired Senior Volunteer Program Endowment (2007)
- Salvation Army Endowment in Memory of Tom Palfreeman (2016)
- Stellar Madison Fund (2017)
- Tri-Centennial Observance Fund (our Nation's Tri-Centennial in 2076) (1994)

Education

- Mary Battles Canida Memorial Endowment (2013)
- Marty and Bea Ferguson Endowment (Prince of Peace Catholic Schools) (2008)
- Food for Students Fund (2021)
- For the Little Ones Fund: Madison Consolidated Schools Pre-Kindergarten Program Endowment (2019)
- Dr. Gertrude Geraets Memorial Fund for Prince of Peace Catholic Schools (2015)
- Nathan Hadley Memorial Fund for MCHS Career Readiness (2017)
- Hanover Community Education Fund (2006)
- Lou Knoble Gift of Art Fund (MCHS Fine Arts Academy) (2020)
- Madison Consolidated High School Special Education Endowment (2012)

- Madison Consolidated Schools Educational Foundation Fund (1994)
- Madison-Jefferson County Public Library Endowment Fund (2001)
- MJHS Peer Counseling Endowment in Honor of Dianna Risk (2007)
- Pope John Elementary School Children's Fund (2003)
- Deborah Lynn Taylor Memorial Endowment Fund (1999)
- Randy and Donna Wehner Children's Literacy Fund (2022)
- World Languages and International Studies Endowment (2021)
- Betty S. Wynn Memorial Fund (Business Teacher Professional Development at MCHS) (2010)

The Elderly

- Hagemann Endowment Fund for Meals on Wheels (2002)
- LifeTime Resources Senior Services Development Fund (1997)

The Environment

- Hanover Community Garden Endowment (2022)
- Richard Tevis Heck/Ruth Irwin Heck Fund (Indiana Foresters) (1995)
- Heritage Trail Conservancy Endowment (2011)
- John Paul Park Conservancy Endowment (2012)
- Frieda Suppes Jones/John Price Jones Memorial Fund (Jefferson County Environment) (1993)
- Madison Beautification Fund (2019)
- Madison Riverfront Development Corporation Endowment (2018)
- Madison Riverfront Endowment Fund (1995)

Health

- B.R. and H.L. Alexander Memorial Endowment for H.O.P.P.S. (Helping Our Pediatric Patients Smile) (2015)

- Bethany Circle/Della Courtney Memorial Endowment Fund (KDH) (2000)
- Centerstone Mental Health Fund for Jefferson County (2008)
- Developmental Services, Inc. Endowment Fund (2000)
- Domestic Violence Support Fund (Safe Passage, Inc.) (2018)
- Wanda Jackson Sunshine Fund for Huntington's Disease (2016)
- King's Daughters' Hospital Fund (1995)
- King's Daughters' Hospital / William G. Crosby Fund for Pediatrics (1992)
- Life Choices Clinic Endowment (2016)
- Beverly McGuire Scott Memorial Fund (KDH - Oncology) (1995)

History & Preservation

- Broadway Fountain Endowment Fund (2000)
- College Hill Cemetery Endowment (2015)
- Historic Eleutherian College Memorial Endowment (2016)
- Jefferson County Historical Society Endowment Fund (1993)
- Jefferson County Medical Society Endowment Fund for Dr. Hutching's Office (1997)
- Lanier Mansion Endowment (2018)
- George and June Miller Genealogy Fund (2022)
- Endowment for Pearl Park (2009)
- Rogers Family Memorial Historical Research Fund (Jefferson Co. Historical Society) (2008)
- Save Our History Endowment (Jefferson Co. Historical Society) (2017)
- The Weinberg Family Fund (1995)

Religion

- Jeanne Bunton Memorial Endowment for Madison Presbyterian Church (2000)
- Catholic Cemeteries of Jefferson County Fund (2017)

- Christ Episcopal Church Endowment Fund (2008)
- Patty Cooper Memorial Endowment for Hanover United Methodist Church (2016)
- First Christian Church Endowment (2015)
- Hanover Presbyterian Church Fund (1995)
- Hanover United Methodist Church Endowment Fund (1997)
- Hanover United Methodist Church Food Pantry Fund in Memory of Marie Steir (2020)
- Richard Tevis Heck/Ruth Irwin Heck Fund for Madison Presbyterian Church (2002)
- Kessler and Lawrence Family Endowment for Christ Episcopal Church (1999)
- Roland Lichlyter Fund for the Hanover United Methodist Church (2014)
- Lick Branch Cemetery Endowment in Memory of Everett and Ethel Lamb (2022)
- Arleida R. Metz Memorial Fund (Prince of Peace Catholic Parish) (1994)

Veterans

- Caring for Veterans Fund (2015)
- Indiana Veterans Memorial Cemetery Endowment (2019)
- Jefferson County Veterans Fund (Jefferson County Veterans Council) (2015)

Youth

- Gerald E. Amos Memorial Endowment Fund (intellectually challenged children) (1996)
- Big Brothers/Big Sisters of Jefferson County Endowment Fund (1998)
- Eleanor T. Birk Foundation Youth Fund (2015)
- Camp Louis Ernst Fund in Honor of Don Riley and Perin Scott (2018)

- Children's Advocacy Center of Southeastern Indiana, Inc. Endowment (2022)
- James M. Demaree Memorial Fund (Girls, Inc.) (1995)
- Friends of Hargan-Matthews Park Fund (2017)
- Justin Geyman Memorial Endowment (Jefferson County Soccer Association) (2007)
- Girls Inc. of Jefferson County Endowment Fund (1994)
- Hanover Fund for Youth (1996)
- Jane's Kids Endowment (2023)
- Jefferson County 4-H Development Fund (1996)
- Jefferson County 4-H Horse & Pony Program Fund in Memory of Helen Kreeger (2017)
- Jefferson County Youth Fund *established by the Goodmans* (1998)
- Jefferson County Youth Shelter Endowment in Memory of John Clapham (1998)
- Delbert O. King Memorial Endowment Fund (2000)
- Lide White Memorial Boys & Girls Club Endowment Fund (1998)
- Dr. Marcella S. Modisett Endowment for Girl Scouts of Kentuckiana (1996)
- Dr. Harve and Joyce Rawson Memorial Endowment (Englishton Park) (2008)
- Barbara Trimble Memorial Fund for Girls Inc. (2015)
- Youth As Resources, Jefferson County, Endowment Fund (2001)

Multiple

- John Hawk Memorial Endowment (Christ Episcopal Church and Heritage Trail Conservancy) (2022)
- Carl J. and Mary M. Hoefling Fund (First Christian Church, Jefferson County Historical Society, Pilot Club, and Retired Senior Volunteer Program (2001)

- Larry and Charmaine Owens Endowment (Girls Inc., Madison-Jefferson County Public Library, and Trinity United Methodist Church) (2008)
- William F. Stephan Family Fund (Heritage Trail Conservancy, Jefferson County Veterans Council, LifeTime Resources, and Madison Riverfront Development Corporation) (2018)
- Women's Giving Circle Endowment in Memory of Bonnie Hare (agencies serving women and children) (2012)

Donor Advised Funds

- Rob and Michele Barlow Charitable Endowment (2021)
- Dan and Molly Baughman Charitable Fund (2019)
- Bethany Circle/Mary E. & Artz Ellis Memorial Fund (1994)
- Daniel and Jessica Butler Charitable Endowment (2022)
- Canida/Knox Family Fund (1993)
- Children's Fund of Jefferson County in Memory of Rita Jo Adams (2011)
- Joseph T. and Ruby W. Craig Fund for Learning (2021)
- Cronen/Marsiglio Family Endowment Fund (1997)
- Bill Demaree Memorial Endowment (2021)
- Dorsey Family Endowment (2019)
- Bob and Brenda Eversole Endowment (2011)
- Alex Feltner Memorial Endowment (2023)
- Josh and Barb Ford Family Fund in Memory of Kenneth Stier (2017)
- Tony Greco Memorial Fund for the Arts (2015)
- Grote Lamplighter Endowment (2018)
- Brok D. Hensler Memorial Endowment (2002)
- Chuck, Bonnie, and Brok Hensler Endowment (2002)

- Howard and Mary Muncie Hensler Memorial Fund (2017)
- Mike Hess Memorial Endowment (2012)
- Hubbard Family Endowment (2018)
- Hunt Family Endowment (2022)
- Al and Connie Huntington Family Community Fund (2014)
- Kristen E. Kemper Memorial Endowment (2008)
- Kings' Daughters' Health Community Health Initiatives Endowment (2000)
- Lichlyter Fund for Youth (2019)
- Madison Chemical Company, Inc. Employees Fund (1997)
- James A. and Dixie J. McDonough Art Education Fund (1999)
- McKay Family Fund (2013)
- Karen S. Modisett Endowment (2021)
- Morgan Family Advised Fund (1996)
- Mickie Nethery Memorial Endowment (2007)
- Dr. John W. Petscher Memorial Endowment (2012)
- Fernando and Julie Rubio Charitable Endowment (2018)
- Schafer Family Philanthropy Fund (2021)
- Jason and Marlana Schafer Family Charitable Fund (2019)
- Schroeder Foundation Endowment Fund (1993)
- Skiles Family Endowment Fund (1997)
- Doug and JoAnne Spiller Family Endowment (2021)
- Tony and Hilary Steinhardt III Community Fund (2021)
- Jeff and Susan Studds Community Fund (2022)
- Clifford O. Taylor Memorial Fund for the Performing Arts (2001)
- Vecchie-Campbell Family Endowment (2019)
- The Wallis Family Fund (1993)
- Tony and Robin Waltz Family Fund (2014)
- Evelyn Wheeler Charitable Endowment (2019)
- John and Maureen Wurtz Charitable Fund (2015)

Flexible Community Funds

- 7 Hugs: The David E., Sally Kirk JD, and Stephanie Webster Family Endowment (2018)
- Bill and Stacy Barnes Charitable Endowment (2018)
- Eleanor T. Birk Foundation Community Fund (2018)
- Tim and Kim Breeding Family Endowment (2021)
- Community Foundation Board Member and Alumni Fund (2014)
- Barbara Ann Cowan Memorial Fund (2002)
- Cronen/Marsiglio Family Unrestricted Endowment (2002)
- First Financial Bank Community Fund (2015)
- Gardner Insurance Agency Community Fund (2015)
- German American Bank Endowment (2018)
- The Douglas and Ann Grahn Endowment (2002)
- Walter A. and Jean Graham Greiner Memorial Fund (1994)
- Jefferson County Enrichment Endowment (2001)
- Jenner Family Endowment (2018)
- The Lineburg Family Endowment (2002)
- Madison Precision Products Community Fund (2014)
- Gil and Trudy McCoy Unrestricted Endowment (2001)
- Kevin and Mary Kay McCubbin Endowment (2021)
- The John Morgan Family Fund (2002)
- Rinda Rains Memorial Endowment (2002)
- Julius "Bud" and Irene Ritter Memorial Endowment (2001)
- Margaret Francis Seifert and Gregory A. Russell Endowment (2014)
- Devon and Rachel Sharpe Endowment (2019)
- Sherman, Barber, & Mullikin Fund for Jefferson County (2018)
- Norbert A. "Tony" Steinhardt, Jr. and Phyllis Steinhardt Family Endowment (2019)

- Nancy J. Strandmark Memorial Fund (2017)
- Ann Suchocki and Jim Mason Family Fund (2014)
- Tribute and Memorial Fund (1992)
- Vehicle Service Group Employee Endowment (2015)
- Vonderheide Family Community Appreciation Fund (2020)
- George Wagoner, MD and Marjorie Jefferies Wagoner, MD Fund (2001)
- Robert E. Wall, DDS Fund (1993)
- Don R. Wallis Memorial Fund (1992)

Scholarships

- Sharon Thom Alcorn Memorial Scholarship (1998)
- M.W. Anderson Scholarship (1997)
- Helyn Bishop Scholarship (2004)
- Broadway School Alumni Scholarship (1996)
- Keith Brooks Memorial Scholarship (1996)
- Calvin Family Scholarship (2013)
- CAM Car Club Scholarship (2016)
- Hendricks R. Canida Scholarship Contest Fund (2014)
- Tiffany Lee Carter Memorial Scholarship (2003)
- Gary Chapman Memorial Scholarship Fund for the Arts (2018)
- Cheatham Family Scholarship (2021)
- Lisa Cheatham Memorial Scholarship (2008)
- The Chan Chilton Memorial Scholarship (1998)
- Class of '84 Scholarship (1995)
- Joseph V. Cline Scholarship (1994)
- Thomas D. Craft, Jr. Memorial Scholarship (2007)
- Christie Crafton Memorial Scholarship (1995)
- Norma A. Cull Memorial Scholarship (1994)
- Custer Oratory Contest Scholarship Endowment (2018)
- Deputy Alumni Scholarship (1997)
- Kenneth E. and Mary Lou Dunbar Scholarship to Honor Perry & Dunbar Drugstore Employees (2020)
- Dupont Alumni Scholarship (2000)

- Frances K. Eisan Memorial Scholarship (2013)
- Mabel C. Green Memorial Scholarship (1995)
- Hall Family Scholarship (1994)
- The Hanover College/Paul Ogle Fund (Hanover College) (1993)
- Marjorie Cornell Hare Nursing Scholarship Fund (Ivy Tech) (2012)
- Dr. Fred S. Henderson Family Scholarship Fund (2015)
- Dennis Holt Memorial Scholarship (2000)
- Glenn G. and Dorothy Ebel Huntington Memorial Scholarship (1999)
- Jefferson County 4-H Scholarship (1997)
- Ralph and Robyn Jones Family Memorial Scholarship (1998)
- Charles H. and C. Chris Keller Scholarship (1994)
- George and June Kirk Scholarship (1999)
- Kiwanis Club Scholarship in Memory of John Hawk (2022)
- Fred and Judy Koehler Family Scholarship Fund (2017)
- Dallas Lamb Visual Arts and Arts & Crafts Scholarship Fund (2022)
- Dorothy B. Lotz Scholarship (1995)
- Madison Chautauqua Scholarship for the Arts in Memory of Bob Fourhman (1994)
- MCHS Class of 1966 Scholarship Fund (2011)
- Madison Kiwanis – Connor K. Salm Scholarship (2019)
- Madison Railroad Scholarship in Memory of Robert Griffin (2023)
- Lynn A. Maricle Music Scholarship (2006)
- Dale McNeely Scholarship Fund (2009)
- Father Hilary G. Meny Scholarship (1994)
- Meyers-Hoefling Memorial Scholarship (2023)
- George and June Miller Memorial Scholarship (2014)
- Marcia S. Morrill Scholarship of the Madison Rotary Club (1996)
- Terri Nighbert Memorial Scholarship (1998)

- Bill Oldaker Scholarship Fund of the Madison Rotary Club (1992)
- Brad O’Leary Scholarship (2001)
- Larry and Charmaine Owens Madison Rotary Club Scholarship (2008)
- Mary Elizabeth Patterson Memorial Scholarship (2014)
- Troy Allen Pyles Memorial Scholarship (2004)
- Rainbow Youth Scholarship Fund (2022)
- Dr. Harve E. and Joyce E. Rawson Scholarship (Franklin College) (1999)
- J. Michael Sample Memorial Scholarship for Music (1997)
- Ralph and Margaret Seifert Madison Rotary Club Scholarship (2021)
- Bonnie and Printis Shelton Scholarship Fund (2018)
- Carolyn Bruce Spicer and Gene E. Spicer Nursing Scholarship (2019)
- Brian W. Stites Memorial Scholarship (1996)
- Mayor Damon Welch Memorial Scholarship (2020)
- Nathan Wilson Memorial Mathematics Scholarship (1998)
- Terry and Wanda Wood Memorial Scholarship (2022)
- The Wood Memorial Scholarship (1995)
- Curtis Wright Memorial Scholarship (1999)

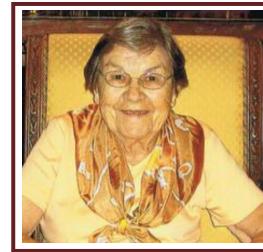
Non-Permanent Funds

These Donor Advised Funds are established with the purpose of spending their entire principal. Donors annually decide how much they want to donate to charities, make a lump sum gift into their fund (often times of appreciated stock) in that amount, and then advise the Foundation on how they would like the available money distributed to nonprofit organizations.

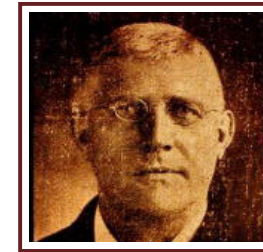
- Fred and Judy Koehler Charitable Fund (2016)
- Devon and Rachel Sharpe Charitable Fund (2020)
- David and Sally Webster Community Fund (2021)

- ANNIVERSARY FUNDS -

30 YEARS



Jefferson County Historical Society
Endowment Fund (Designated)



Schroeder Foundation
Endowment Fund (Donor Advised)



Wallis Family Fund
(Donor Advised)

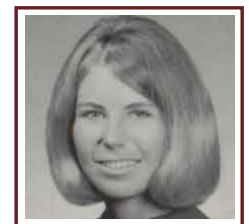
25 YEARS



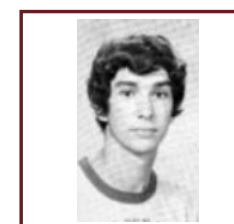
Big Brothers/Big Sisters of
Jefferson County Endowment
(Designated)



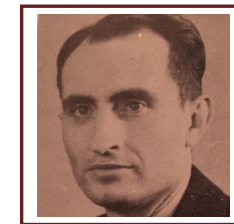
Lide White Memorial Boys And
Girls Club Endowment Fund
(Designated)



Sharon Thom Alcorn Memorial
Scholarship (Scholarship)



Chan Chilton Memorial
Scholarship (Scholarship)

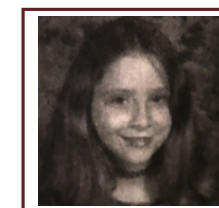


Nathan Wilson Memorial
Mathematics Scholarship (Scholarship)

20 YEARS



Pope John Elementary School
Children's Fund (Designated)



Tiffany Lee Carter Memorial
Scholarship (Scholarship)

HONORING COMMITMENT TO JEFFERSON COUNTY'S FUTURE

The Legacy Society honors individuals who have demonstrated commitment to their community by including the Community Foundation in their estate planning. Too often, these gifts are unrecognized because they come at the end of the donors' lives. The Legacy Society was established in 2003 to publicly thank these donors during their lifetimes.

Membership in the Legacy Society ensures that donors' charitable dollars are utilized in the way they intended. Planned giving may be used to create a new fund, contribute to any of the Foundation's existing funds, or be distributed at the discretion of the Community Foundation Grants Committee.

The Legacy Society has no minimum gift requirement, as each commitment represents a pledge to the community and its future through philanthropy. Membership is voluntary and free. There are several ways to give including bequests, beneficiary of IRAs and insurance policies, charitable remainder trusts, and charitable gift annuities.

Leaving a legacy for your favorite charity after you are gone is easy and a great way to decrease the potential tax burden of your heirs. Here are the most common and tax-efficient planned gifts that you can note in your will/estate documents:

- **Bequest** – Designate an amount or percentage noted in your will/estate documents
- **Life Insurance** – Name the Community Foundation or your favorite charity as a beneficiary
- **Retirement & Investment Accounts** – Name the Community Foundation or your favorite charity as a beneficiary for the most tax-efficient asset to gift at death
- **Appreciated Stock** – Avoid your heirs paying capital gains tax on the sale of stocks, bonds, and mutual funds
- **Annuities & Trusts** – Leave a percentage or specific amount to the Community Foundation or to the charities that you name as beneficiary

Always contact your professional advisors and the managing company of your assets when updating your beneficiaries! Contact Bill Barnes at 812-274-0241 or by email at bill@cfmjc.org, and he can share with you the easy options of creating your legacy for Jefferson County's future.



-MARY- CLASHMAN

Mary Clashman was a woman who stood firmly for her beliefs and the causes and organizations about which she cared most.

A long-time Jefferson County resident, Dupont High School graduate, and Indiana University graduate, Mary Clashman was passionate about conservation and preservation. She fervently cared for the well-being of animals as well as the health and welfare of her fellow man. Service to benefit multiple causes was a central part of Mary's life and focus.

She established the Jefferson County Animal Welfare Fund organization. She was a lifetime Salvation Army Board member. Mary also held offices for many organizations including the College Hill Cemetery Association. She volunteered 20+ years for Norton King's Daughters' Hospital and was instrumental in the establishment of Norton King's Daughters' Hospice.

Mary joined the Legacy Society in 2018. Following her passing on October 17, 2022, Mary's estate made generous contributions to nonprofit organizations and the causes about which she cared, including to the Jefferson County Animal Welfare Fund Endowment and the College Hill Cemetery Endowment at the Community Foundation.

Thank you, Mary, for serving our community through your volunteer efforts and for allowing the Community Foundation to continue your legacy of generosity.

Legacy Society Members

*** indicates new members; ** indicates a member/couple who has passed away**

Dwight & Rita Addleman
Bill & Stacy Barnes
Tim & Kim Breeding
Kate & Michael Brown
Bob & Charlotte Canida
Dean & Jana Clapham
Don & Peggy Clapham
Mary Clashman**
Mike & Laurie Dorsey
Amy & Stephen Eberwine*
Bob** & Brenda Eversole
George Freeman
Dick & Connie Goodman
Douglas & Ann Grahm**
Meredith Gregg
Glenna Hanks Wade
John Hawk**
Bill & Jennifer Hensler
Dianne Hill

Kelley Hoagland
Bob & Claudia Hoban
James & Sherrill Holt
Al** & Connie Huntington
Jim Jackson & Alice Carlson Jackson
Curt & Nancy Jacobs
Kevin Kellems
Chris & Karol Kirk
Fred & Judy Koehler
Allen Manning
Louise Markel**
Gil & Trudy McCoy
William & Edna Meyers**
Gerry Michl
Karen Modisett
Marcella Modisett**
Janis Petscher**
Don & Yolanda Phillips
Dale & Kay Rankin

Harve & Joyce Rawson**
Wendell & Debbie Seaborne
David** & Betty Sebree
Ralph & Margaret Seifert**
Devon & Rachel Sharpe
Printis & Bonnie** Shelton
Donald N. Smith
William Stephan
Steven Strandmark
June Taylor
William** & Nancy Underwood
Henry Van Leeuwen**
Jan Vettrhus
Mary Goode Wallis**
Tony & Robin Waltz
David & Sally Webster
Suzanne Williams
John & Maureen Wurtz
Joe & Kay** Yager

RMD = *Really Magnificent Donation*

If you are 73 or older and have an IRA (Individual Retirement Account), then you have likely heard the acronym RMD, which stands for Required Minimum Distributions. You can direct your RMD to a charitable organization like the Community Foundation and avoid paying income taxes on the distribution.

“Hand Picked” | Larry Rudolech

- We Prefer the Term - “Really Magnificent Donation”

That’s because you can direct money from your IRA to give to one of over 260 existing endowments at the Community Foundation or use your RMD to establish a brand-new endowment with us!

In 2022, Donna Wehner decided to use her RMD to establish a new endowment with her husband, Randy. The Randy and Donna Wehner Children’s Literacy Fund is a Designated Endowment. This means that annual grants from this fund will be made to Lydia Middleton Elementary School and Pope John XXIII Elementary School for literacy programs and projects for the students. Donna and Randy chose this type of endowment due to Donna’s many years as a local elementary school teacher. “I wanted to leave something for teachers to continue to have funds for literacy programs,” said Donna. Being in the classroom, she saw the importance of instilling reading and writing skills in children at an early age to help them with their academic growth and success. “Reading is very dear to my heart,” she shared. “I decided to use some of my RMD money to fund these programs. I would rather give money to education than just pay more taxes!!”



By using your RMD, you can create an endowment to fund the same charity each year, or you can help a student through a scholarship, or address the ever-changing needs of the community through a Flexible Community Fund. Many of our endowments are established in memory or in honor of a loved one. For Donna and Randy, this was a great fit for their charitable giving. Donna had these words of encouragement: “I highly recommend those who have a passion for something to fund what they love as we have.”

If this is something that you think would fit well with your philanthropic goals, contact Bill Barnes at 812-265-3327 or email him at bill@cfmjc.org to learn more.

Community Foundation - DONORS -

The names listed on the following pages are those of generous individuals, families, businesses, and organizations who made a donation in 2023 to the Community Foundation. We are truly a foundation supported by our community, as 65% of last year's donations were in the amount of \$100 and under. Thank you to everyone who gave. We are honored to help you support the causes you care about the most!

"Old City Hall" | Eric Phagan

A-F

Eddie and Becky Adkins
Merdell Adler
Tracy Ahlbrand
Elizabeth Auxier
Kendra Auxier
Liz Patton Auxier
Mary Ellen Bargerhuff
Rob and Michele Barlow
Bill and Stacy Barnes
Marlene Bateman
Hilary A. Beall
Ada Bear
Marta Belt
David and LuAnn Bennett
Kim Bennett
Karin Bernstein
Pat and Julie Berry
Katy Biallas
Lindsay Bloos
Nadja Boone
Alyssa Bower
Jarrett Boyd
Jim and Launa Braun
Stephanie Brawner
Tim and Kim Breeding
Kate Brown
Martha Brown
Todd Bruther
Karen Buchanan
Mel Buchanan
Daniel and Jessica Butler
Mary Kay Butler
Bill and Julie Cain
Phyllis Calvin
Becky Canida
Bob and Charlotte Canida
Christy Canida
Donna Carl
Janet Castor
Kyleen Center
Elizabeth Chapa
Mark Cheatham
Cathy Chilton
Debbie Ciganovich
Liz Ciganovich
Dean and Jana Clapham
Daryl and Cindy Clark
Paula Clark
Jennifer Clayton
Cathy Cleveland

Jay Coles and Kathryn Prochoroff-Coles
Bea Collins
Judy Collins
John and Darleen Connolly
Helen Cope
Patricia Corbin
Dale and Kathy Crafton
Valecia Crisafulli
Jim Crone
Paul and Cherri Cronen
Brenda Cummins
Julie Curtis
Cara Cyrus
Jenny Darnold
Mary Davee
Yvonne Davis
Linda DeLuca
Missy Demaree
Celestra Dewey
Karen Dickie
Sandy Dierdorf
Jim and Carri Dirksen
Molly Dodge
Michael and Laurie Dorsey
Carol Dozier
Sylvia Duke
Jane Durst
Nancy Eagleson
Laura Edwards
Jackie Eggenspiller
Brian and Laura Elbogen
Brenda Eversole
Joe and Evelyn Ferguson
Keith and Dorothy Finch
Brenda Finnegan
Anna Fisher
George Anne Fisher
Mary Foley
Mike and Cheryl Foley
Josh and Barb Ford
Philip and Eileen Fowler
Sandy Freeman

G-L

Bev Gaffney
Linda and Dave Garrett
Tracy Geglein
Darrell and Karen Ginn
Jeremy and Renee Glunt
Mark Goebel
Tom and Sandy Gold

Cindy Goley
 Mark and Marjorie Goley
 Robin Goodknight
 Ann Selby Goodman
 Teresa Gotthardt
 Lisa Gray
 Natalie Green
 Meredith Gregg
 Maria Grote
 Carolyn Gunter
 David and Sheridan Hadley
 Jessica Hall
 Lynn Hall
 Tammy Hall
 Margaret Hamilton
 Susanne Hamner
 Lisa Hanson
 Doug and Tricia Hardin
 Letha Harding
 Amanda Harsin
 Paula Hartman
 Ann Haw
 Mary Heaton
 Wilma Henderson
 Bill and Jennifer Hensler
 Jean Herron
 Angie Hertz
 Carol Hertz
 Dee Hertz
 Katie Hertz
 Kelli Hertz
 Karen Hicks
 Bob and Claudia Hoban
 Dan and Laura Hodges
 Keith and Karen Howard
 Martie Hoying
 Robert and Debbie Hudson
 Dan Hughes
 Jack and Donna Hughes
 Connie Huntington
 Richard Ice
 Virgil Imel
 Robert and Grace Ireland
 Curt and Nancy Jacobs
 TJ and Misty Jacobs
 Leah James
 Phoebe James
 Joe Jenner
 Betsy Johnson

Betsy Johnson
 Christina Jones
 Leah Cook Jones and family
 Mike Jones
 Pam Jones
 Debbie Judge
 Terry Kapfhammer
 Colleen Keith
 Tracy Keller
 Gary and Sue Kemper
 Heidi Kendall-Sage
 Virginia Kerst
 Chris and Karol Kirk
 Linda, Stan, & Gloria Kittle
 Shirley Kloepper
 Fred and Judy Koehler
 Penny Koehler
 Betty Konkle
 Mary Kraft
 Everett Lamb Family
 Lindsey Laughlin
 Mary Jane Laughlin
 Bonnie Lee
 Karen and Philip LeGrand
 Keith and Ellen Levine
 Josh and Beth Lichlyter
 Michael and Janet Lichlyter
 Maggie Lisle
 Gerri Liter
 Ray and Sue Livers
 Tomeka Livers
 H. Boone Lodge and William Sullivan
 Eston and Cindy Long
 Mary Carol Lorton
 Janet Huber Lowry
 Jon and Katie Louis
 Linda Lytle

M-R

Madison Chemical Company
 Employees
 Christopher Alcorn
 Angela Ashley
 Kelli Baker
 Shawn Bennett
 Evan Brown
 James Bruther
 Lyle Campbell

Jeanne Cleary
 David Craft
 Michael Craig
 Jeffrey Croxton
 Grace Donnelly
 Kent Ford
 Dick Goodman
 Derek Gosman
 Crystal Greene
 Steven Haines
 Jon Hallgarth
 Trey Harrett
 Doug Hobbs
 Cody Jewell
 Dean Leatherbury
 Phillip Lobb
 Hector Padilla
 Larissa Perry
 Christopher Pope
 Stephen Preece
 Juan Rico
 Tanya Righthouse
 Michael Roberson
 Amanda Schmidt
 Bryon Sego
 Rob Sims, Jr.
 Joseph Todd
 Matthew Todd
 William Torline
 Megan Ulery
 Tanner and Sarah Mahoney
 Ariel Makin
 Allen Manning
 Scott and Lynn Maricle
 Lonnie Mason
 Richard and Genevieve McAtee
 Gil and Trudy McCoy
 Mary Kay McCubbin
 Mary McCuskey
 Chuck and Cindy McKay
 Phil and Kande McKay
 Sarah McQueary
 Marilyn McQueen
 Sally McWilliams
 Candy Meyer
 Joyce Meyer
 Gerry Michl
 Mary Beth Mock
 Karen Modisett

Elaine Morrill
 Sabra Morris
 Cari Morrison-Bear
 Michelle Mouser
 Sally Muessel
 Thelma Mullett
 Luann Nay
 Anna Nelson
 Gregory and Brenda Nethery
 Ruby Nichols
 Bill and June Nighbert
 Margaret Nowling
 Susan Ohlendorf
 Darla Olberding
 Margo Olson
 Charmaine Owens
 Leroy and Sue Palmer
 Sandy Palmer
 Brenda Partridge
 Cheryl Patton
 Emily Patton
 Michael and Gwynn Perlich
 Kirk and Cynthia Peters
 Megan Phillippe
 Eliza Phillippe-Hastings
 Gary and Franny Phillips
 Rod and Lisa Phillips and family
 Terry and Binnie Phillips
 Veronica Phillips
 Alanagh Pimlott
 Debbie Powell
 Alice Rabin
 Starla Raley
 Judith Reasoner
 Kimberly Reese
 Judy Richardson
 Donna Richey
 Connie Risk
 Gloria Risk
 William and Patricia Ritzmann
 Ann Roahrig
 Joe Robbins and Chris Rode-Robbins
 Susanne Robbins
 Alice Rogers
 Ann Roller
 Katherine Rosenberg
 Fernando and Julie Rubio
 Janet and Tom Runck

S-Z

Pam Sandoz
Carol Sargent
Jason and Marlana Schafer
Jill Schafer
Susan Schmidt
Tonya Schmidt
Pamela Schoenstein
Annie Schroeder
Ashley Schutte
Robert Schwartz
David and Diana Schwoeppe
Eric and Sally Schwoeppe
Susan Scott
Devon and Rachel Sharpe
Wanda Shelley
Printis Shelton
Roy and Doris Shelton
Libby Sheppard
Douglas and Eunice Siefert
Austin Sims
Sandi Skiles
Sam and Linda Sloffer
David and Judy Smith
Happy Smith
Cynthia Lin Smoots
Louis and Cecelia Spicer
Nancy Sprunger
Tom and Wanda Spurgeon
Pat and Sue Stack
Susan Stahl
Hilary Steinhardt
John and Brenda Steinhardt
Tony and Phyllis Steinhardt
Tony and Sara Stephanus
Kay Stokes
Steve Strandmark
Renee Strycker
Abby Suiter
Norma Sutherland
Nish Suvarnakar
Kim Swenson Rouse
David Swinney
Melinda Swinney
June Taylor
Elizabeth Thomas
Karen Todd

Mark and Nancy Totten
Patty Trimble
Nancy Underwood
Marianne Ungru
Karen VanderPloeg
Betty Varble
Donn Vecchie-Campbell
Jan Vetrhus
Betsey Vonderheide
Jane Vonderheide
Howard and Barbara VonDissen
Steven and Christine VonDissen
Glenna Hanks Wade
Robert and Chris Wall
Teresa Waller
Lisa Lamb Ward
Nancy Watson
Julie Wattenbarger
David and Sally Webster
JD Webster
Donna Wehner
Kenneth and Polly Wehner
Ginny Welch-Callis
Donald and Joyce Wells
Julie Wells
Linda Wenning
Evelyn Wheeler
Sharyn Whitman
Jill Wiest
Carole Williams
Jane Williams
Sadie Williams
Tony and LeTiscia Wilson
Jason and Stacy Wilson
Stephanie Withered
Katie Wood
Willadene Wood
Sally Wurtz
Gregory and Tracy Wyne
Larry and Gale Wynn
Mi Yung Yoon

Corporations & Organizations

AmazonSmile
Arvin Sango, Inc.
Arvin Sango Foundation, Inc.
Auxier Investments Indiana, L.L.P.

Auxier Marketing
Bellevue Farms
Bender Lumber
Bethany Legacy Foundation
Brooksbury Cemetery Association
Bulk Truck and Transport Service, Inc.
Carriage House of Madison, LLC
Colen Insurance Agency
Farmers Bank of Milton
First Financial Bank
Gardner Insurance Agency Inc.
Gateway Investment Services
German American Bank
Girls Inc. of Jefferson County
Glass Unlimited
Graham Creek Farms
Gray Show Pigs
Grote Industries, LLC
J & C Feed Scottsburg
Jefferson Co. 4-H Club & Agricultural Association
Jefferson County Animal Welfare Fund
Jefferson County Veterans Council
Jenner Law Office
Kasselmann Eminence LLC dba McDonald's
L & N Machine
Leach Show Pigs
Lilly Endowment Inc.
Madison Chemical Company, Inc.
Madison Consolidated School Corp.
Madison Kiwanis Club
Madison Railroad
Madison Rotary Club
Madison Travel Company LLC
Mane Attractions
Morgan & Nay Funeral Centre
PFLAG Hanover Inc.
Poor Jack Amusement
Region 9 JAG Family
Sedam Upholstery
Simply Elite Construction
Sparkman Pallet & Manufacturing
Steinhardt Enterprises
The Benevity Community Impact Fund
The Eleanor T. Birk Foundation
The Grote Lamplighter Club
The Kroger Company
Treasurer of Jefferson County

UChicago Facilities Services
VisitMadison Inc.
YourCause Global Good Network

Trusts & Estates

Anna & Charles O'Banion Trust
Estate of Mary Clashman
Estate of Louise Markel
Estate of Edna Meyers

In Honor

A Auto Repair
Paul and Cherri Cronen
Yvonne Davis
Keith and Karen Howard
Angela Knoble
UChicago Facilities Services
Louis Schoenlein
Letha Harding
Teresa Waller
Joyce Meyer

In Memory

Maurice Auxier
Curt and Nancy Jacobs
Dave Brandon
Jim and Carri Dirksen
Dr. David Butler
Mary Kraft
Scott and Lynn Maricle
Fernando and Julie Rubio
Linda Lindsey Campbell
John and Darleen Connolly
James "Jim" Connolly
Eddie and Becky Adkins
John and Darleen Connolly
Mary Foley
Linda, Stan, and Gloria Kittle
Betty Konkle
Richard and Genevieve McAtee
Elaine Morrill
William and Patricia Ritzmann
Norma Sutherland
Kenneth and Polly Wehner

Karen Chandler Davis
John and Darleen Connolly

Martha Ellis
John and Darleen Connolly

Beverly Cade Ernest
John and Darleen Connolly

Alex Feltner
Joyce Meyer

Mouse Feltner-Waller
Patricia Corbin

Dr. Douglas Grahn
Keith and Ellen Levine

Bonnie Hare
Richard Ice

Al Huntington
Bob and Claudia Hoban

Ted Jones
Daryl and Cindy Clark
Linda and Dave Garrett
Robert and Debbie Hudson
Leah Cook Jones and family
Mike Jones
Karen and Philip LeGrand
Janet and Tom Runck
David and Diana Schwoeppe
Eric and Sally Schwoeppe

Robert Montgomery Knight
Jason and Marlana Schafer

Earl Lamb
Everett Lamb Family
Wanda Shelley
Lisa Lamb Ward

Louise Markel
Curt and Nancy Jacobs

Blanche Shelton
Allen Manning

Sandra Shelton
Merdell Adler
Bill and Julie Cain
Keith and Dorothy Finch
Darrell and Karen Ginn
Mark and Marjorie Goley
Graham Creek Farms
Jack and Donna Hughes
Lonnie Mason
Luann Nay
Region 9 JAG Family
Joe Robbins and Chris
Rode-Robbins

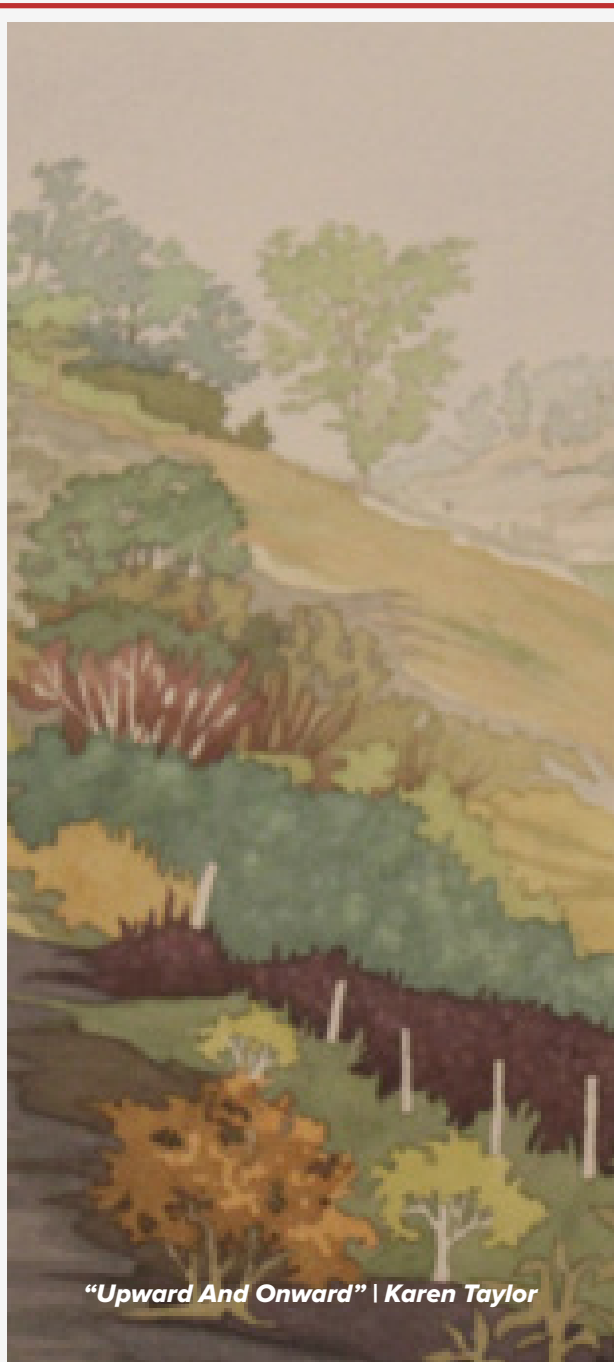
Pamela Schoenstein
Roy and Doris Shelton
David and Judy Smith
Tony and Sara Stephanus
David Swinney
Melinda Swinney
Howard and Barbara VonDissen
Steven and Christine VonDissen
Tony and LeTiscia Wilson
Larry and Gale Wynn

H. Irene Niccum Spicer
Louis Spicer

Brian Stites
Mike and Cheryl Foley

Norma and Bill Stiver
Alice Rabin

Mayor Damon Welch
Gary and Franny Phillips



"Upward And Onward" | Karen Taylor

IVY TECH BENEFACTOR OF THE YEAR 2023

The Community Foundation of Madison & Jefferson County was honored to be named the 2023 Benefactor of the Year for the Madison Campus of Ivy Tech Community College. This award is given annually to an individual, corporation, or foundation that has made significant contributions to better each of the school's 18 campuses and experiences for its students. CFMJC was one of 18 honorees, which also included two nearby foundations – The Heritage Fund in Columbus, IN, and the Caesars Foundation in Floyd County, IN.

On November 8, 2023, CFMJC was honored locally at the Ivy Tech Madison Chancellor's Awards Luncheon. CFMJC President & CEO Bill Barnes (top photo, at right) attended and was presented a certificate by Madison Campus Chancellor Dr. Amanda Harsin. CFMJC was noted in the college's press release as "a true partner and supporter of our Ivy Tech community for more than three decades."

In a short video filmed about receiving the award, Bill shared that any time the Community Foundation has a chance to support Ivy Tech "our Grants Committee and Board are enthusiastic because it helps our workforce, our local businesses, and is meeting a need."

CFMJC was also recognized later that week on November 10, 2023, at the Ivy Tech Foundation's 60th Anniversary Gala in Indianapolis. Bill once again accepted the award on the Foundation's behalf from Ivy Tech Foundation President Courtney Roberts (bottom photo).



LEADERSHIP JEFFERSON COUNTY

"Riding High" | Russ Vossler

Established in 2017, Leadership Jefferson County (LJC) is a bi-weekly, 10 session course comprised of topics to give participants a better understanding of resources and relationships in Jefferson County. The program was created as an action project of the "Building a Positive Community Through Collaboration & Leadership" initiative of the *Envision Jefferson County* project. That initiative was one of six created through community conversations and surveys hosted by the Envision team.

Topics covered by the course in 2023 included:

- Agriculture & Natural Resources
- Business & Economics
- Education
- Government Agencies & Organizations
- Healthcare
- History
- Industry & Economic Development
- Nonprofits & Volunteerism
- Social Services
- Tourism

CFMJC President & CEO Bill Barnes spoke with the class about Nonprofits & Volunteerism. He walked participants through healthy nonprofit governance practices and an overview of what it means to be a 501(c)3 charitable organization. Participants were then encouraged to use the knowledge and resources gained during the class experience to explore where they may want to volunteer and give back to Jefferson County.





Class of 2023 Graduates: Darren Aldridge – Norton King’s Daughters’ Health | Troy Alvey – Ivy Tech Community College-Madison | Janelle Cleaveland – Salvation Army-Madison | Maranda Elswick – River Valley Resources | Matt Johann – Madison Precision Products | Aditi Marudwar – Grote Industries | Ericka McIntyre – Ericka McIntyre Editing & Writing | Cheryl Nelson – Retired | Lauren Purcell – Norton King’s Daughters’ Health | Becky Pyles – SuperATV | Rachel Sharpe – Hanover College | Stephen Sims – Prince of Peace Catholic Schools | D.J. Walch – Hanover College | David Woolpy – Boys & Girls Club of Jefferson County

LJC greatly appreciates Grote Industries, LLC and their continued sponsorship of the end-of-course celebration and luncheon in May.

Graduates of LJC have enjoyed their experiences and the knowledge they have gained about the community, including 2023 LJC Graduate Rachel Sharpe. “Participating in LJC 2023 was an incredible opportunity to learn from and see all the amazing facets of our Jefferson County community, and I have made lasting friendships with my classmates,” she shared. Following her completion of the program, Sharpe joined the Leadership Jefferson County Steering Committee and leads the Education session. “Being on the Steering Committee has allowed me to meet new people, especially those in our LJC 2024 class, and work with remarkable members of our , community who are making a positive difference!”

2023 marked the fifth graduating class of the program. The future looks bright as the LJC graduates and current participants continue to be examples of engaged and connected community members of Jefferson County.

“ Participating in LJC 2023 was an incredible opportunity to learn from and see all the amazing facets of our Jefferson County community, and I have made lasting friendships with my classmates.”

- Rachel Sharpe, Class of 2023 Graduate



- 2023 - GRANTS

Since its creation in 1991, the Community Foundation of Madison and Jefferson County has invested over \$17.7 million back into Jefferson County through grants and scholarships. In 2023, the Community Foundation granted a total of \$1,132,025 from its endowments, with \$325,900 of that total coming from Flexible Community Funds and Field of Interest Funds through the annual Competitive Grant Cycle.

“Legacy” | Teresa Waller



“Thanks to the generous donors who have established Flexible Community Funds and Field of Interest Funds at the Foundation, we are able to meet the needs of nonprofits serving our communities when it is needed most. These funds all work together to make the largest impact for new programs and projects that benefit our residents all across Jefferson County.”

- CFMJC President & CEO Bill Barnes

To be considered for funding through the annual Competitive Grant Cycle, local nonprofit agencies submitted an online application. Selected finalists were then emailed any additional questions or received a site visit from members of the Foundation’s Grants Committee to learn more about the organizations, their projects, and goals.

Organizations that received 2023 competitive grant funding included:

- Centerstone of Indiana \$4,250 -

To provide therapy kits and materials for the Jefferson County children they serve

- Englishton Park Presbyterian Ministries, Inc. \$3,500 -

To purchase and upgrade the 2-way emergency radios for the Children’s Summer Camp program

- Friends of Camp Louis Ernst \$5,400 -

To support the renovation of the bathroom and shower facility at the camp

- Friends of Clifty Falls State Park \$25,550 -

To support the removal of invasive plant species from Clifty Falls State Park

- Girls Inc. of Jefferson County \$49,000 -

To support improvements and painting on the exterior of the organization’s buildings

- The Heritage Trail Conservancy \$10,000 -

To purchase a zero-turn mower for care and maintenance of the trail’s park

- Jefferson County 4-H & Agricultural Association \$40,000 -

To support the renovation of the 4-H Cattle Barn at the Jefferson County 4-H Fairgrounds

- Jefferson County Emergency Management Agency \$30,000 -

To support updates to the Mobile Command Trainer and expand the SUAS Drone program

- Kindness Jefferson County \$22,500 -

To purchase a vehicle to provide a safe space for those with sensory issues during local festivals and events

- Life Choices Clinic \$12,500 -

To provide landscaping for the *Memorial of the Unborn* infant loss marker

- Madison Main Street Program \$10,000 -

To support the organization’s matching grant program for downtown businesses to improve or create new signage

- Madison Main Street Program \$1,500 -

To support training for three of the organization’s board members to attend the *Main Street NOW* National Conference

- Madison Performing Arts Foundation \$3,200 -

To support the *Sol y Canto* concert

- Prince of Peace Catholic Schools \$10,000 -

To upgrade the scorer’s bench and press area of Fr. Hilary G. Meny Gymnasium at Shawe Memorial High School

- River Valley Resources / La Casa Amiga \$10,000 -

To provide an education and skills development program for Hispanic children, youth, and adults in our community

- Town of Dupont / Dupont Park Committee \$30,000 -

To support the creation of a park and playground in the Town of Dupont

- Trinity United Methodist Church \$30,000 -

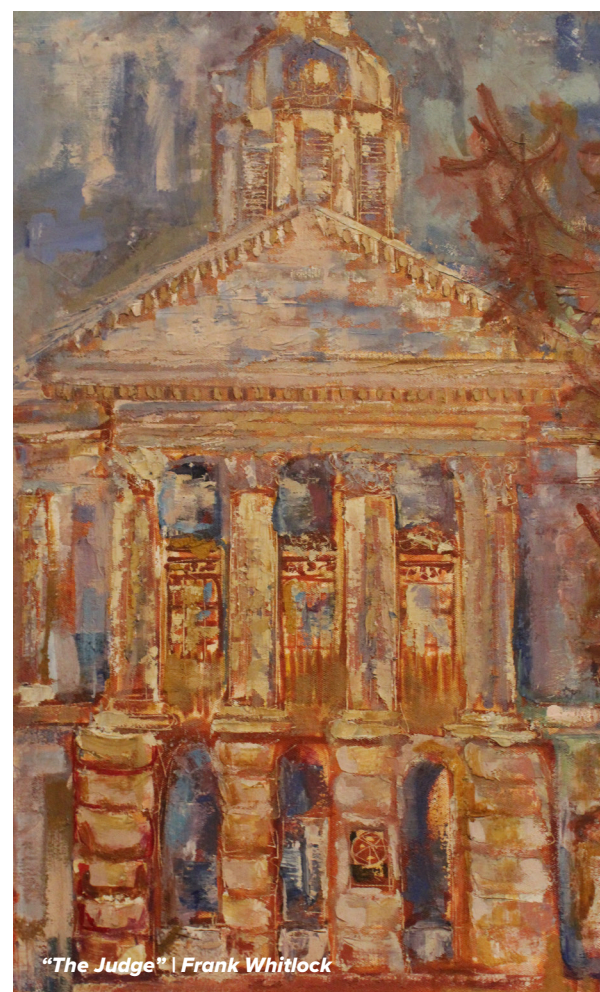
To support HVAC upgrades to the Education/Community Building shared for community events and programs



“Legacy” | Teresa Waller

The 2023 Competitive Grants Cycle awards were made possible by the following Community Foundation's Flexible Community Funds and Field of Interest Endowment Funds:

- 7 Hugs: The David E., Sally Kirk, JD, & Stephanie Webster Family Endowment
- Gerald E. Amos Memorial Endowment Fund
- Bill & Stacy Barnes Charitable Endowment
- Eleanor T. Birk Foundation Community Fund
- Eleanor T. Birk Foundation Youth Fund
- Caring for Veterans Fund
- Greg Cloud Memorial Endowment
- Community Endowment for the Arts
- Community Foundation Board Member & Alumni Fund
- Barbara Ann Cowan Memorial Fund
- Cronen/Marsiglio Family Unrestricted Endowment
- Harold A. "Hal" Davis Memorial Endowment for the Arts
- First Financial Bank Community Fund
- Gardner Insurance Agency Community Fund
- German American Bank Endowment
- Douglas & Ann Grahn Endowment
- Walter A. & Jean Graham Greiner Memorial Fund
- Hanover Fund for Youth
- Jefferson County Enrichment Endowment
- Jenner Family Endowment
- Frieda Suppes Jones/John Price Jones Memorial Fund
- The Lineburg Family Endowment
- Madison Beautification Fund
- Madison Precision Products Community Fund
- Gil & Trudy McCoy Unrestricted Endowment
- The John Morgan Family Fund
- Rinda Rains Memorial Endowment
- Julius "Bud" & Irene Ritter Memorial Endowment
- Neida Rogers Memorial Endowment for Music
- Margaret Francis Seifert & Gregory A. Russell Endowment
- Devon & Rachel Sharpe Endowment
- Sherman, Barber, & Mullikin Fund for Jefferson County
- Norbert A. "Tony" Steinhardt, Jr. & Phyllis Steinhardt Family Endowment
- Nancy J. Strandmark Memorial Fund
- Ann Suchocki & Jim Mason Family Fund
- Vehicle Service Group Employee Fund
- Vonderheide Family Community Appreciation Fund
- George Wagoner, MD & Marjorie Jefferies Wagoner, MD Fund
- Robert E. Wall DDS Fund
- Don R. Wallis Memorial Fund



"The Judge" | Frank Whitlock



Dawn – Dupont – Determination

Beginning with the letter "D" is not the only thing these three words have in common. They are also the driving force behind one of the newest playgrounds and parks in Jefferson County!

In September 2022, Dupont resident Dawn Jines contacted the Community Foundation's Bill Barnes for help with a dream that she had – a new and safe playground and park in the heart of the Town of Dupont. With Bill providing guidance and encouragement, Dawn assembled her team of volunteers, and they got to work planning fundraisers and the design of the park. The Dupont Playground/Park Committee, the Community Foundation, and the Bethany Legacy Foundation (BLF), a new private foundation focused on positive health outcomes, all communicated and collaborated as the project progressed. Tony Steinhardt III from the City of Madison shared his expertise and experience in planning and design to transform the empty lot into a new gathering space.



BLF provided a \$250,000 grant in tandem with \$30,000 from the Community Foundation and \$5,000 from the Women's Giving Circle. BLF also provided an additional \$100,000 dollar-for-dollar matching grant. Residents of Dupont and of the surrounding communities all pitched in to make the park a reality, along with generous donations from the following Donor Advised Funds at the Community Foundation: Bob and Brenda Eversole Endowment, Devon and Rachel Sharpe Charitable Endowment, Howard and Mary Muncie Hensler Memorial Fund, and the Wallis Family Fund. An official Grand Opening ceremony and ribbon cutting was held on Saturday, March 30, 2024.

Congratulations to the Dupont Playground/Park Committee and the Town of Dupont on creating such a fun and vibrant place for community members of all ages to enjoy!

Community Leadership & Grant Flashback

2023 marked the 10-year anniversary of the Community Foundation’s \$40,000 grant for the creation of the Madison Area Arts Alliance. The following timeline was shared in the Foundation’s 2013 Annual Report:

Establishment of the Madison Area Arts Alliance: A Timeline

April 4, 2013 – Bill Barnes, Community Foundation President & CEO, convened local artists to discuss how the Community Foundation could best make an impact on the creative community in Jefferson County. The group met biweekly and developed a plan for the Madison Area Arts Alliance to build, inspire, and nurture a sustainable local arts movement. Goals included promoting the Madison area as an arts and creative destination, sharing resource opportunities, providing peer-to-peer networking opportunities, coordinating a calendar of arts events, maintaining a website for promotion of the arts, and developing educational programs for the artists and the public. Committee members included Leticia Bajuyo, Mary Jo O’Connor, Eric Phagan, and Bob Saueressig (Visual Arts); Rhonda Deeg (Stained Glass); Kelley Hoagland and Laura Ratcliff (Performing Arts); Theresa Strohl (Photographer); Greg Ziesemer (Musician); Bob Maile (Custom Woodworking); Kim Nyberg (Facilitator); and Bill Barnes (Convener).

October 3 & 8, 2013 – The Arts Alliance plan was shared with artists, business owners, community leaders, elected officials, and supporters of the arts. The feedback on the direction of this new organization was very positive, including the following comments: “The stars are aligning...finally!”, “Count me in!”, “There’s strength in numbers.”; “Madison should be THE Arts destination!”

October 23, 2013 – The Community Foundation Board of Directors approved a \$40,000 grant for the creation of this new organization.

February 3, 2014 – Kim Nyberg was hired to be the Interim Executive Director of the Madison Area Arts Alliance.

Since that initial investment made by the Community Foundation in October 2013, the Arts Alliance has made a name for itself and the artists it serves through its programs and projects, many of which have been funded by the Community Foundation through its Donor Advised, Field of Interest, and Flexible Community Funds. Some of these projects included the Creative Community Workshop series, the *Flight* sculpture exhibit at Bicentennial Park, and the *Kindness Mural* at Second and Mulberry Streets. In its formative years, the MAAA received additional support from CFMJC through temporary office space at the Foundation’s office before the MAAA moved to their current office, known as The S.P.O.T., at 326 Mulberry Street. “I’m incredibly proud of the Community Foundation’s work to support and elevate the arts and our creative community,” said Community Foundation President & CEO Bill Barnes. “Our investments of time and money are paying great dividends in Madison and Jefferson County.”

In the last decade, the Community Foundation has also seen its cumulative granting grow for the arts and culture sector. Cumulative grant funding through the Foundation’s annual grant cycle to arts and culture projects has grown, and there are now 12 endowments that benefit the arts or provide scholarships to local students pursuing artistic interests, including one that directly benefits the Madison Area Arts Alliance.

The Community Foundation has enjoyed seeing the growth of our artistic community over the last 10 years and looks forward to seeing what is in store for the next 10 years and beyond!



- 2022 & 2023 GRANT CYCLE - Completed Projects & Flashbacks

We always love to see the programs and projects we fund through our Competitive Grant Cycle become a reality! Here are photos of some recently completed projects:



Jefferson County 4-H Fairgrounds Mural
Completed 7/10/23

The Jefferson County 4-H Fairgrounds received a \$5,300 grant in 2022 to install a mural on the east end of the Community Building. Area artist, art teacher, and 4-H parent Stacy Hardesty-Gray designed the mural. Local 4-H members and leaders assisted her with the painting that was unveiled and dedicated in July 2023 just in time for the annual 4-H Fair.



Kindness Jefferson County Sensory Vehicle
Completed 2/8/24

Kindness Jefferson County received a \$22,500 grant in 2023 to support the creation of a sensory activation vehicle. This vehicle will be available for use at local festivals and events for those with sensory issues. Having this safe space accessible to those who may be overwhelmed by the sights and sounds of some of the large crowds will help include them and their caregivers in the events that shape the culture of our county. Kindness Jefferson County held a ribbon cutting ceremony and reception for the new vehicle on February 8, 2024.



Vietnam War Veterans Memorial
Completed 3/29/24

On March 29, 2024, which was also National Vietnam War Veterans Day, the Jefferson County Veterans Council dedicated the new Jefferson County Vietnam Veterans Memorial on the Jefferson County Courthouse lawn. The Community Foundation supported the creation of the memorial with a \$15,000 grant in 2023. The life-size statue of a Vietnam-era soldier, along with bricks and plaques recognizing service members and a reflection bench, helps our community honor those who served their country and to remember those who gave the ultimate sacrifice.

WOMEN'S GIVING CIRCLE

EMPOWERING WOMEN TO MAKE A DIFFERENCE

Formed in 2012 by 12 local women, the Women's Giving Circle of Jefferson County (WGCJC) is a community of philanthropic women of all ages and backgrounds. By combining their financial strength, these women collectively make a positive change for women and children throughout Jefferson County.

All women in Jefferson County are welcome and invited to join. Membership consists of an annual tax-deductible contribution of \$100. Each membership has 75% placed in a pass-through field of interest fund, while the remaining 25% is invested in the Women's Giving Circle Endowment in Memory of Bonnie Hare. Junior Memberships are available for young women ages 18 and under for \$50 and are split \$25/\$25. At the end of 2023, the WGCJC Endowment had a value of \$150,022.48. All assets of the WGCJC are held and maintained at the Community Foundation of Madison and Jefferson County.



WGCJC GOALS

1. Make a significant difference in the community by empowering women to contribute time, talents, and monetary resources to the needs of women, children, and families
2. Educate and increase awareness of the needs of local women, children, and families
3. Provide social opportunities, events, and exposure for women in our community

WGCJC FALL OPEN HOUSE

A sunny evening on October 24, 2023, at Thomas Family Winery was the perfect setting for the WGC Fall Open House. This new tradition, which began in 2022, is a wonderful time for current members and those interested in joining the Giving Circle to meet for food and fellowship. Guiding Circle members also shared the impact that membership plays in the role of awarding grants to programs and projects that benefit our local women and children. We'd love to have you join us at our next Open House on October 22, 2024 at the winery!



"A Night Out" | Eric Phagan

WGCJC ANNUAL CELEBRATION

The Women's Giving Circle of Jefferson County wrapped up 2023 with 214 members! From the membership dollars, extra donations collected, funds available from the endowment, and money raised through The Great Cookie Caper, \$24,760 in grants were awarded to eight nonprofit organizations that serve women and/or children in Jefferson County.

The 2023 WGC members were excited to attend the annual celebration event on April 3, 2024, at the Fairfield Inn – Madison, sponsored by Gardner Insurance Agency and McKay Accounting Service. Members voted on accepting the grant recommendations prior to the event or online and were happy to hand out the grant awards during the evening's festivities.



The 2023 holiday season presented a chance for the Women's Giving Circle to raise additional funds for the endowment and the granting fund. The WGC was selected as that year's benefitting charity of the annual *Great Cookie Caper*. Members of the Giving Circle baked several hundred dozen cookies and treats which were then sold at the Madison Visitors Center during the *Nights Before Christmas Candlelight Tour of Homes* on the last weekend in November and the first weekend of December. With additional sweets and goodies provided from the Cookie Caper organizers, the WGC raised over \$5,000! Thank you to everyone who gave their time and effort to make this fundraiser a success!

2023 GIVING CIRCLE GRANTS



Englishton Park, Inc. – Children's Summer Camp tutoring program and team-building supplies



Habitat for Humanity of Southeast Indiana – Home repair program for low-income women homeowners



Junior Achievement of Kentuckiana – Licensing for *SmartStart: Nurturing Financial Wizards* financial concepts program to be implemented in local schools



Jefferson County United Way – Books for the *Dolly Parton Imagination Library* mailed to Jefferson County children ages 0-5



Life Choices Clinic – Life Lessons Center Education Program online curriculum



Madison Consolidated Schools – Trust-Based Relationships Initiative for high protein snacks and manipulatives to address food insecurity and misbehavior during the school day



Retired Senior Volunteer Program (RSVP) – *Santa for Seniors* program; making holidays brighter for elderly women residing in nursing homes



Safe Passage Inc. – Rental assistance for survivors of domestic violence and prevention program/materials

JOIN NOW!

The Women's Giving Circle is open to all women and girls. You can also dedicate your membership or extra gift in memory or in honor of a special woman in your life.

Call 812-265-3327 or email julie@cfmjc.org and ask Julie Wells for more information!

HOW WE GIVE

The WGCJC makes grants annually to organizations that have the greatest potential to help the women and children of Jefferson County. Grants are focused on the following four fields of interest, with the specific purpose of benefitting women and/or children:

- Education
- Economic Empowerment
- Physical & Mental Health
- Violence & Crime Prevention

The Grants Sub-Circle reviews applications and provides grant recommendations to the general membership, which then votes on the recommendations prior to the annual meeting/dinner in April. Since its creation, the WGCJC has granted \$235,415 to nonprofit organizations serving the women and children of Jefferson County.



- 2023 - SCHOLARSHIP RECIPIENTS

“A More Perfect Union” | James Tracy

- John Mitchell Adams -

Madison Consolidated High School – Lilly Endowment Community Scholarship

- Elijah Boscia -

Southwestern High School – Dale McNeely Scholarship &

J. Michael Sample Memorial Scholarship for Music

- Cambryn Bryant -

Southwestern High School – Christie Crafton Memorial Scholarship

- Zoe Bullock -

Madison Consolidated High School – Custer Oratory Contest Scholarship,

Mabel C. Green Memorial Scholarship, & Lynn A. Maricle Music Scholarship

- Crisnell Cabigting -

Madison Consolidated High School – Sharon T. Alcorn Memorial Scholarship

- Camaran Cahall -

Madison Consolidated High School – Dennis Holt Memorial Scholarship &

Carolyn Bruce Spicer and Gene E. Spicer Nursing Scholarship

- Aleea Crumley -

Southwestern High School – Jefferson County 4-H Scholarship &

Mary Elizabeth Patterson Memorial Scholarship

- Jordan DeAtley -

Southwestern High School – Community Foundation Scholar Award &

Brian W. Stites Memorial Scholarship

- Craig Demaree -

Madison Consolidated High School – Helyn Bishop Scholarship, Dorothy B. Lotz Scholarship,

& Larry and Charmaine Owens Madison Rotary Club Scholarship

- Casey Dyer -

Madison Consolidated High School – Dupont Alumni Scholarship, Jefferson County 4-H

Scholarship, & Ralph and Robyn Jones Family Memorial Scholarship

- Olivia Fresh -

Southwestern High School – Lisa Cheatham Memorial Scholarship &

Marcia S. Morrill Memorial Scholarship

- Lillian Guirguis -

Madison Consolidated High School – Glenn G. and Dorothy Ebel Huntington

Memorial Scholarship

- Harrison Hall-

Madison Consolidated High School – Gary Chapman Memorial Scholarship for the Arts,

Mabel C. Green Memorial Scholarship, Dr. Fred S. Henderson Family Scholarship, &

Madison Chautauqua Scholarship for the Arts in Memory of Bob Fourhman

- Syrenia Hardy -

Southwestern High School – Dupont Alumni Scholarship & Jefferson County 4-H Scholarship

- Brady Jackson -

Shawe Memorial High School – Community Foundation Scholar Award

- Tanner Jacobs -

Southwestern High School – CAM Car Club Scholarship, George and June Miller Memorial

Scholarship, & Bill Oldaker Scholarship of the Madison Rotary Club

- Daniel Johnson -

Madison Consolidated High School – Jefferson County 4-H Scholarship

- Marin Kernan -

Madison Consolidated High School – Norma A. Cull Memorial Scholarship

- Daylan Konkle -

Southwestern High School – Broadway School Alumni Scholarship &
Keith Brooks Memorial Scholarship

- Preston Kuppler -

Madison Consolidated High School – Custer Oratory Contest Scholarship

- Mia Mires -

Madison Consolidated High School – Joseph V. Cline Scholarship &
Custer Oratory Contest Scholarship

- Emily Nay -

Madison Consolidated High School – Thomas D. Craft, Jr. Memorial Scholarship

- Haleigh Pyles -

Madison Consolidated High School – Carl J. and Mary M. Hoefling Scholarship of the Pilot
Club & Brad O’Leary Scholarship

- Kaitlyn Rutledge -

Madison Consolidated High School – Tiffany Lee Carter Memorial Scholarship &
Community Foundation Scholar Award Scholarship

- Addison Sheets -

Madison Consolidated High School – Myrwin W. Anderson Scholarship &
Calvin Family Scholarship

- Van Skinner-

Madison Consolidated High School – Chan Chilton Memorial Scholarship &
Nathan Wilson Memorial Mathematics Scholarship

- Clayton Sontag -

Southwestern High School – Ralph and Robyn Jones Family Memorial Scholarship

- McKalyn Stewart -

Madison Consolidated High School – George and June Kirk Scholarship

- Alexia Sullivan -

Madison Consolidated High School – Cheatham Family Scholarship,
Terri Nighbert Memorial Scholarship, & The Wood Memorial Scholarship

- Cadence Traylor -

Madison Consolidated High School – Curtis Wright Memorial Scholarship

- Elijah Turner -

Shawe Memorial High School – Community Foundation Scholar Award

- Emily Vaughn -

Shawe Memorial High School – Hall Family Scholarship &
Charles H. and C. Chris Keller Scholarship

- Annie Zhang -

Madison Consolidated High School – Class of ’84 Scholarship, Custer Oratory Contest
Scholarship, Frances K. Eisan Memorial Scholarship, Dorothy B. Lotz Scholarship, MCHS
Class of 1966 Scholarship, Madison Kiwanis – Connor K. Salm Scholarship, &
Bonnie and Printis Shelton Scholarship

2023 LILLY ENDOWMENT

COMMUNITY SCHOLARSHIP RECIPIENT

JOHN MITCHELL ADAMS

As the 2023 Lilly Endowment Community Scholar, Madison Consolidated High School graduate John Mitchell Adams received a four-year, full-tuition scholarship and \$900 yearly stipend for required books and equipment. Mitchell is the son of Troy and Kristy Adams of Madison. He currently attends Butler University and is pursuing a degree in Sports Media. On campus he is involved in Butler Sports Live, is a member of the Butler Club Curling team, races for the school in the eNASCAR College Series, and plays first trumpet in the basketball pep band. Mitchell also works as a freelance camera operator around central Indiana.

“My college experience so far has exceeded my expectations,” Mitchell shared. “I have so many great opportunities at Butler which are allowing me to further my career. I have also been able to try things I never thought I would. I’m very grateful to Lilly Endowment Inc. and the Community Foundation of Madison & Jefferson County for giving me this opportunity.”

Including Mitchell, the five finalists (and their schools) of the 2023 Lilly Endowment Community Scholarship were: Jordan DeAtley (Southwestern), Brady Jackson (Shawe Memorial), Kaitlyn Rutledge (Madison Consolidated), and Elijah Turner (Shawe Memorial). DeAtley, Jackson, Rutledge, and Turner each received a \$1,500 Community Foundation Scholar Award for being named a finalist in recognition of their efforts and achievements.

The Lilly Endowment Community Scholarship is the result of a statewide Lilly Endowment Inc. initiative to help Hoosier students reach higher levels of education. Over 5,000 full-tuition scholarships have been awarded, and over \$486 million in scholarship tuition has been provided since the program’s inception in 1998.



-2023- Board & Staff

Board of Directors:

JD Webster, Chair | Beth Lichlyter, Vice Chair | Jenny Darnold, Treasurer
Lynn Maricle, Secretary | Daniel Butler | Tanner Mahoney
Phil McKay | Fernando Rubio | Devon Sharpe | Nancy Totten

Staff:

Bill Barnes, President & CEO | Kelly Miller, Finance & Program Officer
Kelley Hoagland, Marketing & Donor Relations Manager
Julie Wells, Scholarship Coordinator

- 2023 Board -



Daniel Butler



Jenny Darnold



Beth Lichlyter



Tanner Mahoney



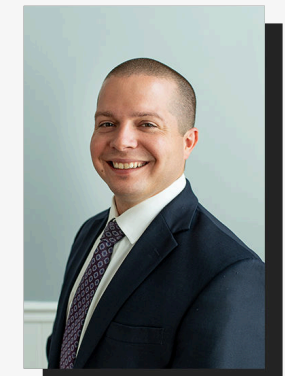
Lynn Maricle



Phil McKay



Fernando Rubio



Devon Sharpe



Nancy Totten



JD Webster

- Staff -



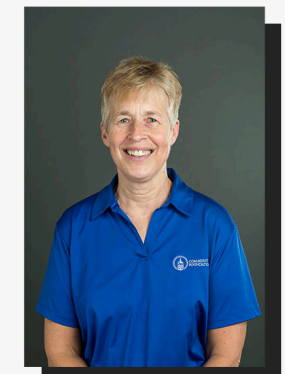
Bill Barnes



Kelly Miller



Kelley Hoagland



Julie Wells

"Untitled" | Karen M. Taylor

Other Community Volunteers

Michele Barlow
 Rob Barlow
 Marta Belt
 Nadja Boone
 Anthony Brandon
 Kim Brant
 Launa Braun
 Tim Breeding
 Todd Bruther
 Kathy Crafton
 Carrie Dickerson
 Chelsea Dugle
 Andrew Forrester
 Tracy Geglein
 Jean Herron
 Keith Howard
 Scott Hubbard
 Leah James
 Shareen Kring
 Chad Lewis
 Cindy McKay
 Angela Miller
 Margo Olson
 Brenda Partridge
 Don Phillips
 Gloria Risk
 Susie Robbins
 Pam Sandoz
 Greg Schneider
 Annie Schroeder
 Rachel Sharpe
 Austin Sims
 Lori Slygh
 Janelle Smith
 Jessica Spiess
 JoAnne Spiller
 Sue Stack
 Larry Truax
 Donna Wehner
 Joyce Wells
 Jane Williams
 Stephanie Withered



"Lookout Point" | Kevin Carlson

Past Board Members

(Years of Service)

Roger Allman (1999-2003)
 Mike Armstrong (1997-2003)
 Darrell Auxier (1991-1996)
 Dan Baughman (2000-2006)
 Nancy Bear (2007-2008)
 Anthony Brandon (2011-2017)
 Jim Braun (2003-2010)
 Timothy Breeding (2005-2011)
 Todd Bruther (2017-2023)
 Ben Canida (2012-2015)
 Cliff Carnes (2012-2015)
 Janet E. Castor (1999-2002)
 Lonnie Collins (2000-2006)
 Darleen Connolly (2012-2018)
 David J. Craig (1991-1997)
 Tom Davee (1996-2002)
 Carri Dirksen (2010-2016)
 Mike Dorsey (2000-2006)
 Cecil Dorten (1991-1993)
 Brenda Eversole (1991-1996)
 Gregory K. Flood (1991-1993)
 Ben Foley (2015-2021)
 Matt Forrester (2000-2006)
 Virginia Franks (1996-1999)
 Sam George (1997-2000)
 Jaman Geyman (2015-2021)
 Robin Goodknight (2015-2018)
 Constance M. Goodman (2000-2006)
 Ann Grahm (1991-1997)
 Terry Grote (1996-2002)
 Walter F. Grote, Jr. (1991-1996)
 Thomas V. Hambrick (1991-1993)
 Bonnie Hare (2010-2016)
 William H. Hensler (2001-2007)
 Robert D. Hoban (1991-1998)
 Scott Hubbard (2016-2022)
 Kathleen Huffman (2005-2009)
 Al Huntington (2011-2017)
 Alice Jackson (2004-2010)
 Curt Jacobs (1998-2004)
 Jane W. Jacobs (1991-1998)
 Jane Jakoubek (2004-2006)
 Joe Jenner (2014-2020)
 Kris W. Kindelsperger (1991-1998)

Sue Kittinger (2002)
 Fred Koehler (2003-2009)
 Lillian Sue Livers (1995-1999)
 Donald McCauley (2002-2007)
 Chuck McKay (2009-2015)
 Gerry Michl (2002-2007)
 Marcella Modisett, MD (1995-2000)
 Sarah Morgan (1995-2001)
 Bernard Murphy (1994-1996)
 James C. Pendleton (1993-1997)
 Eric Phagan (2013-2016)
 Donald L. Phillips (1995-2000)
 Dr. Ralph Pratt (1991-1993)
 Dotti Reindollar (1991-1994)
 Ivan Rimstidt, D.V.M. (1993-1999)
 Howard Risk (1997-2000)
 Michael Robinson (2008-2014)
 Bruce Rose (1993-1994)
 Tim Sandker (1996-2000)
 Rhonda Sauley (1994-1998)
 Susan Schmidt (2008-2011)
 Ashley Schutte (2007-2013)
 Ann Schwartz (2016-2022)
 E. Perin Scott (1991-1996)
 Wendell Seaborne (1998-2000)
 Betty L. Sebree (2001-2007)
 Margaret Seifert-Russell (2011-2017)
 Phil Sherman (1992-1998)
 Tom Solomon (2006-2012)
 Susan Stack (2006-2013)
 Ann Suchocki (2014-2020)
 Rich Sutter (1998-2000)
 Steve Telfer (2013-2018)
 Barbara Trimble (1991-1995)
 Nancy Underwood (1999-2005)
 Donn Vecchie-Campbell (2011-2014)
 Betsey Vonderheide (2017-2023)
 Tony Waltz (1999-2005)
 Josh Wilber (2016-2018)
 Roger Williams (2008-2011)
 Stephanie Withered (2017-2023)
 Mark Wynn (2006-2012)

CONSOLIDATED STATEMENTS OF FINANCIAL POSITION

Assets

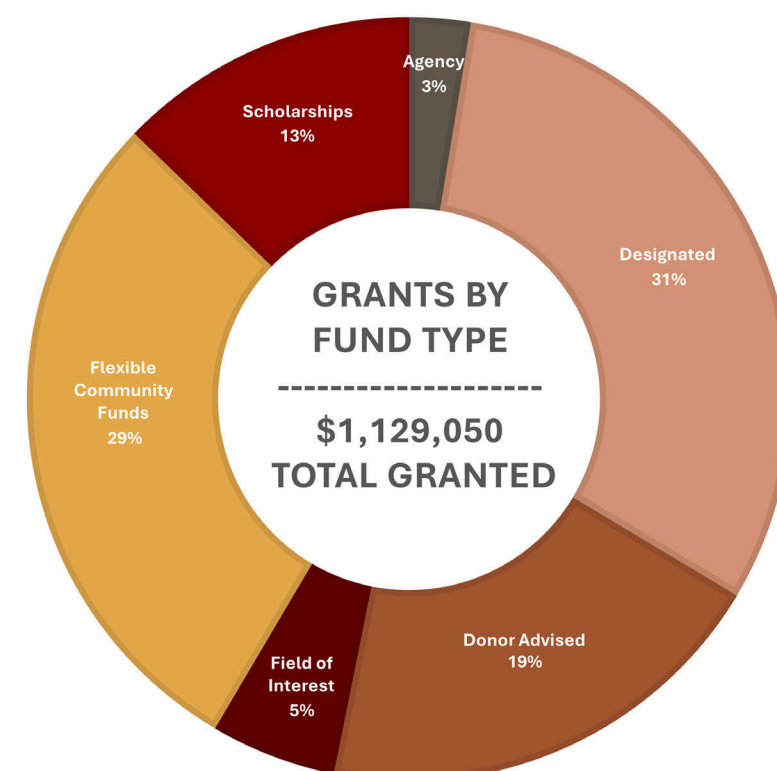
	2023	2022
Cash and cash equivalents	\$747,484	\$1,303,179
Investments	\$39,582,058	\$33,995,929
Other assets	\$353	\$353
Property and equipment, net	\$224,750	\$231,750
	\$40,554,645	\$35,531,211

Liabilities and Net Assets

	2023	2022
Liabilities		
Accounts payable	\$3,653	\$16,409
Charitable gift annuities	\$1,396,914	\$1,454,106
Custodial funds	\$1,447,495	\$1,037,041
<i>Total liabilities</i>	\$2,848,062	\$2,507,556
Net assets		
Without donor restrictions		
Operating	\$412,449	\$454,998
Board Designated Administrative Endowment	\$264,295	\$179,277
<i>Total without donor restrictions</i>	\$676,744	\$634,275
With donor restrictions		
Restricted for specified purpose	\$532,546	\$479,278
Restricted in perpetuity - endowment	\$25,207,134	\$23,925,789
Restricted subject to the Organization's spending policy	\$11,293,159	\$7,984,313
<i>Total with donor restrictions</i>	\$37,029,839	\$32,389,380
<i>Total net assets</i>	\$37,706,583	\$33,023,655
	\$40,554,645	\$35,531,211

CONSOLIDATED STATEMENT OF ACTIVITIES

	2023			2022
Support, revenues and other	Without Donor Restrictions	With Donor Restrictions	Total	Total
Contributions				
Cash and other financial assets	\$5,000	\$1,535,930	\$1,540,930	\$3,223,090
Nonfinancial assets	-	-	-	\$594,241
Change in value of charitable gift annuities	-	(\$112,921)	(\$112,921)	(\$22,937)
Investment return, net	\$64,608	\$4,792,918	\$4,857,526	(\$4,058,783)
Management fees	\$450,771	-	\$450,771	\$407,618
Other revenues	\$12,100	-	\$12,100	\$12,264
Net assets released from restrictions	\$1,575,468	(\$1,575,468)	-	-
<i>Total support, revenues and other</i>	\$2,107,947	\$4,640,459	\$6,748,406	\$155,493
Expenses				
Program services	\$1,720,603	-	\$1,720,603	\$1,631,275
Management & general	\$204,280	-	\$204,280	\$205,351
Fundraising & development	\$140,595	-	\$140,595	\$136,531
<i>Total expenses</i>	\$2,065,478	-	\$2,065,478	\$1,973,157
<i>Change in net assets</i>	\$42,469	\$4,640,459	\$4,682,928	(\$1,817,664)
Net assets, beginning of year	\$634,275	\$32,389,380	\$33,023,655	\$34,841,319
Net assets, end of year	\$676,744	\$37,029,839	\$37,706,583	\$33,023,655





COMMUNITY
FOUNDATION
JEFFERSON COUNTY

P.O. Box 306
Madison, IN 47250-0306

Nonprofit Org.
U.S. Postage
PAID
Madison, IN
Permit No. 5007

The Community Foundation of Madison Jefferson County is pleased to provide this annual report as part of our commitment to honoring philanthropy. You will find within these pages the names of donors who are impacting our community through their generous gifts. You will see how the Foundation supports projects that improve the quality of life in Jefferson County. You will find names of friends and neighbors who have been memorialized or honored by meaningful gifts. You will meet students attending college with help from our scholarships. And, you will find financial information as we strive to provide transparency in the stewardship of our gifts. We hope you enjoy reading this report and we invite you to share it with friends and family after you have read it.

Annual Report Designed By:

Annamae Harmon

aharmondesign@gmail.com

Madison, IN

**Community Foundation of
Madison & Jefferson County**

PO Box 306

416 West St., Suite B

Madison, IN 47250-0306

Ph: 812-265-3327

Fax: 812-273-0181

Email: info@cfmjc.org



Confirmed in Compliance
with National Standards
for U.S. Community
Foundations



cfmjc.org