



Nonprofit Org.  
U.S. Postage  
PAID  
Madison, IN  
Permit No. 5007

# Annual Report 2025

# Shaping

# what's next

The Community Foundation of Madison and Jefferson County is pleased to provide this annual report as part of our commitment to honoring philanthropy. You will find within these pages the names of donors who are impacting our community through their generous gifts. You will see how the Foundation supports projects that improve the quality of life in Jefferson County. You will find names of friends and neighbors who have been memorialized or honored by meaningful gifts. You will meet students attending college with help from our scholarships. And, you will find financial information as we strive to provide transparency in the stewardship of our gifts. We hope you enjoy reading this report, and we invite you to share it with friends and family after you have read it.

Annual Report Created By:  
**Annamae Harmon**  
Madison, Indiana  
aharmondesign@gmail.com

**Community Foundation of  
Madison & Jefferson County**  
PO Box 306  
416 West St., Suite B  
Madison, IN 47250-0306  
Ph: 812-265-3327  
Fax: 812-273-0181  
Email: info@cfmjc.org



# Contents

New Funds	3
Endowments	13
Legacy Society	21
Donors	25
G1K	33
Women's Giving Circle	35
Leadership Jefferson County	41
Grants	44
Scholarships	51
Board & Staff	57
Financials	61



# Welcome

Dear Friends,

For over 35 years, the Community Foundation of Madison and Jefferson County has been an integral player in *shaping the future* of Jefferson County.

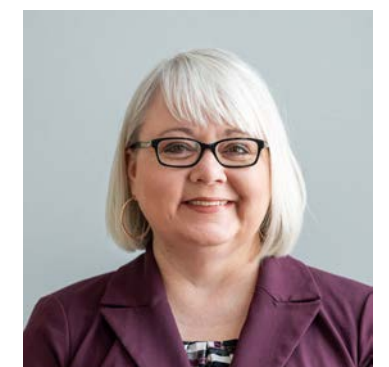
Within the pages of this annual report, we are excited to share with you several examples of our work in our local communities in 2025:

- 15 new endowments were established (pages 3-11) to help shape the future of local nonprofits and students
- How two donors joined the Legacy Society (pages 21-24) and are now leaving their mark on the youth of Jefferson County following their passing
- Creating the G1K program (pages 33-34) and how its charter members will award a large-impact grant to one local nonprofit organization
- Helping the plan to construct a new EMS Transport Hub come to shape through a \$100,000 grant (page 48)
- Recognizing the volunteers who give their time and talents to shape the Community Foundation (pages 57-60)

And, of course, the extensive list of our generous donor family members (pages 25-32), who keep giving back to our community and are a key component to making Jefferson County, Indiana, a wonderful place to live, work, and play! We are grateful to serve our community and look forward to helping shape Jefferson County for the better for generations to come!



Bill Barnes | President & CEO



Jenny Darnold | Board Chair

# 2025 New Funds

In 2025, the Community Foundation had 15 new endowments established. Read on to find out more about our different endowment types and about the donors who established these new funds.

## - DESIGNATED FUNDS -

provide donors with the ability to create a steady stream of income for one or more specific charities – forever. The minimum amount to establish a Designated Fund is \$5,000.

### Eleanor T. Birk Foundation Fund for Prince of Peace Catholic Schools

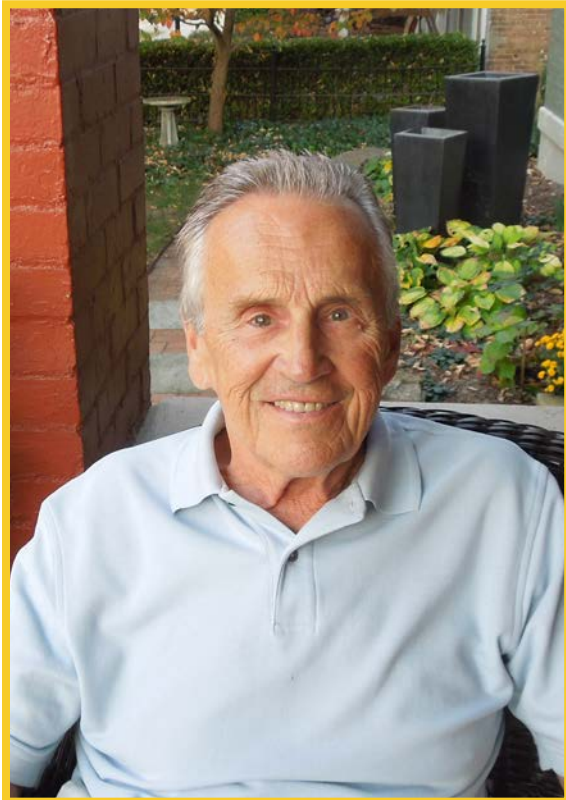


The Eleanor T. Birk Foundation has established multiple funds at the Community Foundation, including the Eleanor T. Birk Foundation Youth Fund in 2015, and the Eleanor T. Birk Foundation Community Fund in 2018. In 2025, the Birk Foundation created this Designated Fund. The Birk Foundation is a private foundation that has provided support to many Jefferson County nonprofits and organizations for over 20 years following Mrs. Birk's passing. During her life in Madison and Hanover, Mrs. Birk was a faithful member of the Prince of Peace Catholic Church and supporter of the local Catholic schools. Each year, grants from this fund will provide support to the mission of Prince of Peace Catholic Schools in her memory.

### Honor Guard Fund Established by the River Rat Rodz Car Club

For 13 years, the River Rat Rodz Car Club organized the popular Riverfront Run Car Show on Memorial Day weekend. During those events, the club would take the time to remember the significance of the holiday and the sacrifices made by service members through a flag raising ceremony by the American Legion Post #9 Honor Guard. To continue to remember and honor the service and sacrifice of military members, the car club established this Designated Fund. Each year, the fund's grant dollars will be sent to the Jefferson County Veterans Council to support Honor Guard Ceremonies at the funerals of our nation's Armed Forces veterans.





## Indiana University School of Medicine Dept. of Anatomy Fund in Memory of Michael G. Brown

Michael G. Brown really wanted to donate his body to science, and he did it! The program continues to need donors, and his family hopes Mike will be an inspiration to do the same. Because the school's donation process and final care of Michael was so easy, his widow, Kate, wanted to honor the school and Michael's memory by creating this Designated Fund. Annual grants from this endowment will be made to the Department of Anatomy at IU's School of Medicine to help further the studies and research of future physicians.



## Southwestern Schools Tennis Program Fund in Honor of Kenny Garrett

Barb and Josh Ford established this Designated Fund to help support the Southwestern Schools' Tennis program over the course of its tennis season. It was also named in honor of Kenny Garrett, who has been a champion of both the Hanover Park and the Southwestern Girls' Tennis Team as a coach and a mentor. Annual grants from this endowment will be made to the Southwestern School Corp. to purchase tennis supplies, pay for tennis tournament fees, and help maintain the tennis court area.

### - FIELD OF INTEREST FUNDS -

provide support to a donor's particular area of interest. The Community Foundation staff, Grants Committee, and Board of Directors identify projects that elevate and support these specialized interests. The minimum amount to establish a Field of Interest Fund is \$5,000.

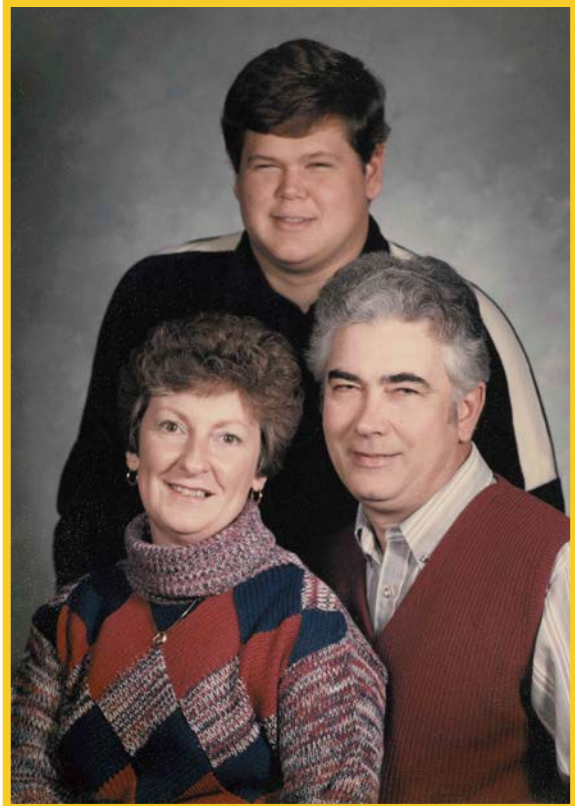
## Jefferson County Art & History Center Admission Fund in Memory of Ann Moore

Ann Moore was a teacher at Pope John Elementary School in Madison for over 30 years. She was committed to helping young minds learn as much as they could about the world around them. Ann's husband, Mike, served in the military and has been a long-time volunteer for the Jefferson County Historical Society. To remember Ann and her love of education, Mike established this Designated Fund for the Historical Society. Each year, the grant dollars from this endowment will be used to provide free admission to the Jefferson County Art & History Center in downtown Madison.



## Joe and Kay Yager Endowment for Youth

Joe and Kay Yager were high school sweethearts who were married for nearly 63 years. Joe lived in Jefferson County his whole life, while Kay moved to the area at age 10. They farmed together and worked hand-in-hand constructing and decorating local homes. Much later in life, when updating their estate documents, Joe and Kay included plans to establish this Field of Interest Fund. Annual grants from this endowment will be awarded as part of the Community Foundation's competitive grant cycle in response to applications from nonprofit organizations serving the youth of Jefferson County. This endowment was created through the Yagers' commitment to the Foundation's Legacy Society. You can read more about this gift on page 23.



## - FLEXIBLE COMMUNITY FUNDS -

give the Community Foundation the flexibility to assist nonprofits annually through grants. Through these funds, donors create a lasting legacy to fulfill the ever-changing needs and dreams of the people of Jefferson County. The minimum amount to establish a Flexible Community Fund is \$5,000.

### G1K Endowment

The G1K Program was launched at the beginning of 2026 as a new collective giving opportunity to annually provide a large-scale impact grant to one nonprofit organization serving the residents of Jefferson County. To help supplement the grant award provided by the memberships collected, David E. and Sally Kirk Webster established this Flexible Community Fund. Each year, this endowment will help fund significant projects and change Jefferson County for the better.



### Dan and Laura Hodges Endowment

After meeting at Hanover College and marrying, Dan and Laura Hodges decided to settle in Dan's hometown of Madison to begin their careers and raise their family. Over the years, both have been heavily involved in charities and civic organizations. To continue their legacy of giving back to the place they call home, Dan and Laura established this Flexible Community Fund. Annual grants from this fund will be used to address the immediate and ever-changing needs of Jefferson County during the Foundation's competitive grant cycle.



### Tony and Robin Waltz Family Community Endowment

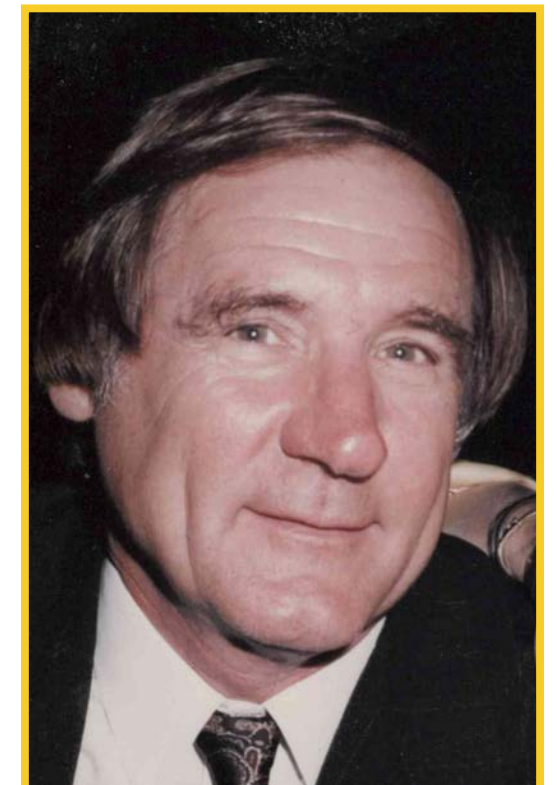
Tony and Robin Waltz established this Flexible Community Fund. The Waltz family has given back to the community they love with their time, talent, and treasure for several decades. This includes supporting many charities and organizations over the years, including Tony's service as Vice Chair and Treasurer for the Community Foundation. Each year, grant dollars from this fund will be directed where and when they are needed most during the Foundation's competitive grants cycle for many generations to come.

## - SCHOLARSHIP FUNDS -

support local students pursuing their academic goals following high school. The minimum amount to establish a scholarship fund is \$20,000.

### Maurice Auxier Memorial Scholarship Fund for the Trades

Maurice Auxier was the founder of Auxier Gas and Bulk Truck & Transport in Hanover, Indiana, and a great supporter of Jefferson County through his business and personal contributions. He was a very skilled tradesman and loved any chance to build. With this in mind, his family and business, Bulk Truck & Transport, established this Scholarship fund in his memory. Each year, this scholarship will be awarded to a Jefferson County graduating senior wishing to continue their studies in manufacturing and/or the trades.



## Carl and Janet Glesing Family Scholarship Fund



Carl and Janet Glesing were lifelong residents of Madison and continue to have deep roots in the community. For many years, they owned and operated Glesing's Greenhouse and Produce on 400 N, a local staple that reflected their strong work ethic and connection to the people of Madison. Education was especially important to the Glesing family. Their children, David Glesing and Cyndi White, both pursued careers in teaching, and Carl served on the Madison Consolidated School Board for two terms. To honor their parents – and in recognition of their father's service to the schools - David and Cyndi, along with their spouses, established this Scholarship Fund. Each year, this scholarship will be awarded to a graduating senior from Madison Consolidated High School or Shawe Memorial High School who plans to attend a four-year college or university to pursue a degree in education and/or the teaching profession, carrying forward the Glesing family's enduring commitment to learning and community.

## Carol Stier Nowlin Scholarship

Josh and Barb Ford started this scholarship as an Acorn Fund in 2021 to honor Barb's mother, Carol Stier Nowlin. Carol was the mother of five children when her husband was unexpectedly diagnosed with a terminal illness. She was an incredible example of someone who believed in herself enough to overcome overwhelming circumstances. Carol chose to go to nursing school while caring for her children and her husband as his disease progressed. Carol received a small scholarship that paid for her books and helped her mitigate some expenses for school. She has always been grateful for the generous help, and wanted to give other women, especially single, head of household, and/or widowed women the opportunity to receive help with their educational goals. With that in mind and now that the endowment is fully funded, this scholarship will be awarded to an adult learner residing in Jefferson County, Indiana, wishing to further their education.

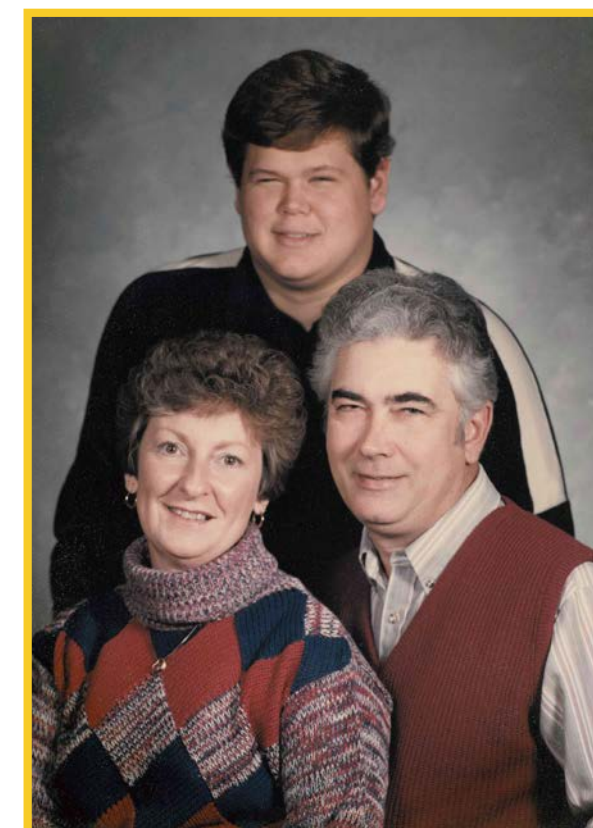


## West Sixth Law Scholarship Endowment

The partners of the West Sixth Law Office believe in giving back to the community. For several years, they have awarded scholarships to local graduating seniors. To help grow the awards and ensure that many generations of Jefferson County students have the chance to pursue their educational goals, the law firm endowed the scholarship with the Community Foundation. Each year a scholarship will be awarded to a graduating senior of Madison Consolidated High School, Shawe Memorial High School, or Southwestern High school planning to attend a two or four-year college or university, with preference given to those pursuing a degree in pre-Law.

## Joe and Kay Yager Scholarship Endowment

Joe and Kay Yager were high school sweethearts who were married for nearly 63 years. Joe lived in Jefferson County his whole life, while Kay moved to the area at age 10. They farmed together and worked hand-in-hand constructing and decorating local homes. Much later in life, when updating their estate documents, Joe and Kay included plans to establish this Scholarship Fund. Each year, this scholarship will be awarded to a graduating senior of any Jefferson County, Indiana accredited high school ranking in the top 10% of their graduating class who is planning to attend a four-year public or private college or university. This scholarship was created through the Yagers' commitment to the Foundation's Legacy Society. You can read more about this gift on page 23.



## Harold & Frances Yancey and Shirley Yancey Kloefer Scholarship



The Yancey and Kloefer families have resided in Jefferson County for generations. Shirley Yancey Kloefer established this Scholarship Fund to remember her parents, Harold and Frances Yancey. For several decades, Harold and Frances owned and operated Yancey's Auto Parts, which was one of the first businesses in the western portion of Clifty Drive. Shirley served as a Spanish teacher at Madison and Southwestern High Schools, and most recently retired as the director of La Casa Amiga, which she helped establish in 2003. To honor her mother's time as a teacher, as well as her own, Shirley established this scholarship to remember her parents and honor their family's legacy in Jefferson County. Each year, this scholarship will be awarded to a graduating senior of Shawe Memorial High School to support their post-secondary educational goals.

## - OTHER FUND TYPES -

In addition to the funds previously mentioned, we offer Agency Funds and Donor Advised Funds.

Agency Funds provide an avenue for nonprofit organizations to invest their own money and create a perpetual stream of support for their mission. The minimum amount to establish an Agency Fund is \$5,000.

Donor Advised Funds allow donors to recommend the charitable organizations that benefit from the fund's annual distribution. Donor Advised Funds are a cost-effective and efficient alternative to a private or family foundation. The minimum amount to establish a Donor Advised Fund is \$5,000.

# WAYS TO GIVE NOW

## Cash

Funds are most often started or established with cash gifts. This can include cash, check, credit card, or ACH/E-Check.

## Securities

Gifts of stocks and securities can be processed easily with help from our staff. For highly appreciated stock, you will not pay capital gains, and your tax deduction will be the market value of the shares.

## Real Estate and Personal Property

Gifts of real estate may include homes, condominiums, apartments, undeveloped land, farmland, and rental property. The Foundation's Board of Directors must approve acceptance of all real-estate gifts.

## Individual Retirement Account (IRA) Charitable Rollover

A donor who is 70 ½ years old can direct any or all their qualified charitable distribution or required minimum distribution at age 73 to the Community Foundation, and they won't pay income taxes on the amount donated.

NEW FOR 2026

# ABOVE-THE-LINE CHARITABLE DEDUCTIONS

Donors who take the standard deduction may also deduct above-the-line charitable contributions of up to \$1,000 for single filers and \$2,000 for joint filers in 2026.

The charitable cash gifts must be made to public charities like the Community Foundation, but exclude donor advised funds, private non-operating foundations, and supporting organizations.

**This is a great way to decrease your taxable income and support your community!**

# Community Foundation Endowments

The funds listed to the right demonstrate what a wide variety of interests people have. Each of them is established with a fund agreement, which directs how the donor wants grants used now and far into the future. The endowments are pooled for investment purposes but accounted for separately. Anyone can add to any fund at any time in any amount. What interests you? For more information about each fund, visit our website at [www.cfmjc.org/funds](http://www.cfmjc.org/funds).

## - Area of Interest -

### Animals

- Jerry E. Andress Memorial Animal Shelter Endowment (2008)
- Community Spay/Neuter Fund (2011)
- Friends of the Jefferson County Animal Shelter (2008)
- Jefferson County Animal Welfare Fund Endowment (2017)
- Madison-Jefferson County Humane Society, Inc. Audrey M. Smith Chapter Fund (1994)
- Spirit's Fund (animal welfare) (2004)

### The Arts

- Community Endowment for the Arts (1996)
- Harold A. "Hal" Davis Memorial Endowment for the Arts (2017)
- Madison Area Arts Alliance Endowment (2018)
- Jonathon D. Menke Memorial Endowment for the MCHS Theatre Dept. (2008)
- Ohio Theatre Endowment (2021)
- Neida Rogers Memorial Endowment for Music (2008)

### Community & Social Services

- Michele Barlow Memorial Endowment for The Women's Giving Circle (2021)
- Clearinghouse of Jefferson County Endowment Fund (2014)
- Greg Cloud Memorial Endowment (fire companies) (2007)
- Community Foundation Administrative Fund (1996)
- Deputy Volunteer Fire Company Endowment (2019)
- James T. and Jennie P. Ford Endowment for the Kent Volunteer Fire Co. (1997)
- Friends of the Madison-Jefferson County Public Library Endowment (2015)
- Habitat for Humanity of Southeast Indiana Endowment (2023)

- Hanover Community Endowment (2023)
- Richard Tevis Heck/Ruth Irwin Heck Fund for the Hanover Volunteer Fire Co. (1997)
- Historic Hoosier Hills RC&D Endowment Fund (1995)
- Jefferson County House of Hope Endowment in Memory of Patty Cooper (2016)
- Ladies' Auxiliary of Kent Fire Department Endowment Fund (1996)
- Madison Main Street Program Endowment (2022)
- Retired Senior Volunteer Program Endowment (2007)
- Salvation Army Endowment in Memory of Tom Palfreeman (2016)
- Stellar Madison Fund (2017)
- Tri-Centennial Observance Fund (our Nation's Tri-Centennial in 2076) (1994)
- Tri-Kappa Madison Endowment (2024)
- VOBC Economic Development Endowment (2024)

### Education

- Anderson Elementary School Fund in Memory of Clarence Eckerty (2024)
- Mary Battles Canida Memorial Endowment (2013)
- Marty and Bea Ferguson Endowment (Prince of Peace Catholic Schools) (2008)
- Eleanor T. Birk Foundation Fund for Prince of Peace Catholic Schools (2025)
- Food for Students Fund (2021)
- For the Little Ones Fund: Madison Consolidated Schools Pre-Kindergarten Program Endowment (2019)
- Dr. Gertrude Geraets Memorial Fund for Prince of Peace Catholic Schools (2015)
- Nathan Hadley Memorial Fund for MCHS Career Readiness (2017)
- Hanover Community Education Fund (2006)

- Indiana University School of Medicine Dept. of Anatomy Fund in Memory of Michael G. Brown (2025)
- Lou Knoble Gift of Art Fund (MCHS Fine Arts Academy) (2020)
- Madison Consolidated High School Special Education Endowment (2012)
- Madison Consolidated Schools Educational Foundation Fund (1994)
- Madison-Jefferson County Public Library Endowment Fund (2001)
- MJHS Peer Counseling Endowment in Honor of Dianna Risk (2007)
- Pope John Elementary School Children's Fund (2003)
- Deborah Lynn Taylor Memorial Endowment Fund (1999)
- Randy and Donna Wehner Children's Literacy Fund (2022)
- World Languages and International Studies Endowment (2021)
- Betty S. Wynn Memorial Fund (Business Teacher Professional Development at MCHS) (2010)

## The Elderly

- Hagemann Endowment Fund for Meals on Wheels (2002)
- LifeTime Resources Senior Services Development Fund (1997)

## The Environment

- Hanover Community Garden Endowment (2022)
- Richard Tevis Heck/Ruth Irwin Heck Fund (Indiana Foresters) (1995)
- Heritage Trail Conservancy Endowment (2011)
- John Paul Park Conservancy Endowment (2012)
- Frieda Suppes Jones/John Price Jones Memorial Fund (Jefferson County Environment) (1993)
- Madison Beautification Fund (2019)
- Madison Riverfront Development Corporation Endowment (2018)
- Madison Riverfront Endowment Fund (1995)

## Health

- B.R. and H.L. Alexander Memorial Endowment for H.O.P.P.S. (Helping Our Pediatric Patients Smile) (2015)
- Bethany Circle/Della Courtney Memorial Endowment Fund (KDH) (2000)
- Centerstone Mental Health Fund for Jefferson County (2008)
- Developmental Services, Inc. Endowment Fund (2000)
- Domestic Violence Support Fund (Safe Passage, Inc.) (2018)
- Indiana Lions Speech and Hearing Fund Established by David Clashman (2024)
- Wanda Jackson Sunshine Fund for Huntington's Disease (2016)
- King's Daughters' Hospital Fund (1995)
- King's Daughters' Hospital / William G. Crosby Fund for Pediatrics (1992)
- Life Choices Clinic Endowment (2016)
- Beverly McGuire Scott Memorial Fund (KDH - Oncology) (1995)

## History & Preservation

- Broadway Fountain Endowment Fund (2000)
- Canaan Cemetery Endowment (2024)
- College Hill Cemetery Endowment (2015)
- Historic Eleutherian College Memorial Endowment (2016)
- Jefferson County Art & History Center Admission Fund in Memory of Ann Moore (2025)
- Jefferson County Historical Society Endowment Fund (1993)
- Jefferson County Medical Society Endowment Fund for Dr. Hutching's Office (1997)
- Lanier Mansion Endowment (2018)
- George and June Miller Genealogy Fund (2022)
- Endowment for Pearl Park (2009)
- Rogers Family Memorial Historical Research Fund (Jefferson Co. Historical Society) (2008)

- Save Our History Endowment (Jefferson Co. Historical Society) (2017)
- The Weinberg Family Fund (1995)

## Religion

- Jeanne Bunton Memorial Endowment for Madison Presbyterian Church (2000)
- Catholic Cemeteries of Jefferson County Fund (2017)
- Christ Episcopal Church Endowment Fund (2008)
- Patty Cooper Memorial Endowment for Hanover United Methodist Church (2016)
- First Christian Church Endowment (2015)
- Hanover Presbyterian Church Fund (1995)
- Hanover United Methodist Church Endowment Fund (1997)
- Hanover United Methodist Church Food Pantry Fund in Memory of Marie Stier (2020)
- Richard Tevis Heck/Ruth Irwin Heck Fund for Madison Presbyterian Church (2002)
- Kessler and Lawrence Family Endowment fbo Christ Episcopal Church (1999)
- Roland Lichlyter Fund for the Hanover United Methodist Church (2014)
- Lick Branch Cemetery Endowment in Memory of Everett and Ethel Lamb (2022)
- Arleida R. Metz Memorial Fund (Prince of Peace Catholic Parish) (1994)

## Veterans

- Caring for Veterans Fund (2015)
- Honor Guard Fund Established by the River Rat Rodz Car Club (Jefferson County Veterans Council) (2025)
- Indiana Veterans Memorial Cemetery Endowment (2019)
- Jefferson County Veterans Fund (Jefferson County Veterans Council) (2015)

## Youth

- Gerald E. Amos Memorial Endowment Fund (intellectually challenged children) (1996)
- Eleanor T. Birk Foundation Youth Fund (2015)
- Camp Louis Ernst Fund in Honor of Don Riley and Perin Scott (2018)
- Children's Advocacy Center of Southeastern Indiana, Inc. Endowment (2022)
- James M. Demaree Memorial Fund (Girls Inc.) (1995)
- Friends of Hargan-Matthews Park Fund (2017)
- Justin Geyman Memorial Endowment (Jefferson County Soccer Association) (2007)
- Girls Inc. of Jefferson County Endowment Fund (1994)
- Hanover Fund for Youth (1996)
- Jane's Kids Endowment (2023)
- Jefferson County 4-H Development Fund (1996)
- Jefferson County 4-H Horse & Pony Program Fund in Memory of Helen Kreeger (2017)
- Jefferson County Youth Fund *established by the Goodmans* (1998)
- Jefferson County Youth Shelter Endowment in Memory of John Clapham (1998)
- Delbert O. King Memorial Endowment Fund (2000)
- Lide White Memorial Boys & Girls Club Endowment Fund (1998)
- Dr. Marcella S. Modisett Endowment for Girl Scouts of Kentuckiana (1996)
- Dr. Harve and Joyce Rawson Memorial Endowment (Englishton Park) (2008)
- Southwestern Schools Tennis Program Fund in Honor of Kenny Garrett (2025)
- Barbara Trimble Memorial Fund for Girls Inc. (2015)
- Joe & Kay Yager Endowment for Youth (2025)
- Youth As Resources, Jefferson County, Endowment Fund (2001)

## Multiple

- John Hawk Memorial Endowment (Christ Episcopal Church and Heritage Trail Conservancy) (2022)
- Carl J. and Mary M. Hoefling Fund (First Christian Church, Jefferson County Historical Society, Pilot Club, and Retired Senior Volunteer Program) (2001)
- Larry and Charmaine Owens Endowment (Girls Inc., Madison-Jefferson County Public Library, and Trinity United Methodist Church) (2008)
- William F. Stephan Family Fund (Heritage Trail Conservancy, Jefferson County Veterans Council, LifeTime Resources, and Madison Riverfront Development Corporation) (2018)
- Women's Giving Circle Endowment in Memory of Bonnie Hare (agencies serving women and children) (2012)

## Donor Advised Funds

- Dan and Molly Baughman Charitable Fund (2019)
- Oscar Clinton Bear II Memorial Endowment (2024)
- Bethany Circle/Mary E. & Artz Ellis Memorial Fund (1994)
- Brok's Endowment for Children (2002)
- Daniel and Jessica Butler Charitable Endowment (2022)
- Canida/Knox Family Fund (1993)
- Children's Fund of Jefferson County in Memory of Rita Jo Adams (2011)
- Joseph T. and Ruby W. Craig Fund for Learning (2021)
- Cronen/Marsiglio Family Endowment Fund (1997)
- Bill Demaree Memorial Endowment (2021)
- Dorsey Family Endowment (2019)
- Bob and Brenda Eversole Endowment (2011)
- Alex Feltner Memorial Endowment (2023)
- Josh and Barb Ford Family Fund in Memory of Kenneth Stier (2017)
- Tony Greco Memorial Fund for the Arts (2015)

- Grote Lamplighter Endowment (2018)
- Chuck and Brok Hensler Memorial Endowment (2002)
- Howard and Mary Muncie Hensler Memorial Fund (2017)
- Mike Hess Memorial Endowment (2012)
- Hubbard Family Endowment (2018)
- Hunt Family Endowment (2022)
- Al and Connie Huntington Family Community Fund (2014)
- Kristen E. Kemper Memorial Endowment (2008)
- Kings' Daughters' Health Community Health Initiatives Endowment (2000)
- Lichlyter Fund for Youth (2019)
- Madison Chemical Company, Inc. Employees Fund (1997)
- James A. and Dixie J. McDonough Art Education Fund (1999)
- McKay Family Fund (2013)
- Karen S. Modisett Endowment (2021)
- Morgan Family Advised Fund (1996)
- Mickie Nethery Memorial Endowment (2007)
- Dr. John W. Petscher Memorial Endowment (2012)
- Fernando and Julie Rubio Charitable Endowment (2018)
- Schafer Family Philanthropy Fund (2021)
- Jason and Marlana Schafer Family Charitable Fund (2019)
- Schroeder Foundation Endowment Fund (1993)
- Skiles Family Endowment Fund (1997)
- Doug and JoAnne Spiller Family Endowment (2021)
- Tony and Hilary Steinhardt III Community Fund (2021)
- Jeff and Susan Studds Community Fund (2022)
- Clifford O. Taylor Memorial Fund for the Performing Arts (2001)
- Vecchie-Campbell Family Endowment (2019)
- The Wallis Family Fund (1993)
- Tony and Robin Waltz Family Fund (2014)
- Evelyn Wheeler Charitable Endowment (2019)
- John and Maureen Wurtz Charitable Fund (2015)

## Flexible Community Funds

- 7 Hugs: The David E., Sally Kirk, JD, and Stephanie Webster Family Endowment (2018)
- Bill and Stacy Barnes Charitable Endowment (2018)
- Eleanor T. Birk Foundation Community Fund (2018)
- Tim and Kim Breeding Family Endowment (2021)
- Community Foundation Board Member and Alumni Fund (2014)
- Barbara Ann Cowan Memorial Fund (2002)
- Cronen/Marsiglio Family Unrestricted Endowment (2002)
- First Financial Bank Community Fund (2015)
- Gardner Insurance Agency Community Fund (2015)
- German American Bank Endowment (2018)
- The Douglas and Ann Grahn Endowment (2002)
- Walter A. and Jean Graham Greiner Memorial Fund (1994)
- Dan and Laura Hodges Endowment (2025)
- Jefferson County Enrichment Endowment (2001)
- Jenner Family Endowment (2018)
- The Lineburg Family Endowment (2002)
- H. Boone Lodge and Bill Sullivan Endowment (2024)
- Madison Precision Products Community Fund (2014)
- Gil and Trudy McCoy Unrestricted Endowment (2001)
- Kevin and Mary Kay McCubbin Endowment (2021)
- The John Morgan Family Fund (2002)
- Rinda Rains Memorial Endowment (2002)
- Julius "Bud" and Irene Ritter Memorial Endowment (2001)
- Margaret Francis Seifert and Gregory A. Russell Endowment (2014)
- Devon and Rachel Sharpe Endowment (2019)

- Sherman, Barber, & Mullikin Fund for Jefferson County (2018)
- Norbert A. "Tony" Steinhardt, Jr. and Phyllis Steinhardt Family Endowment (2019)
- Nancy J. Strandmark Memorial Fund (2017)
- Ann Suchocki and Jim Mason Family Fund (2014)
- Tribute and Memorial Fund (1992)
- Vehicle Service Group Employee Endowment (2015)
- Vonderheide Family Community Appreciation Fund (2020)
- George Wagoner, MD and Marjorie Jefferies Wagoner, MD Fund (2001)
- Robert E. Wall, DDS Fund (1993)
- Don R. Wallis Memorial Fund (1992)
- Tony and Robin Waltz Family Community Endowment (2025)

## Scholarships

- Sharon Thom Alcorn Memorial Scholarship (1998)
- M.W. Anderson Scholarship (1997)
- Maurice Auxier Memorial Scholarship for the Trades (2025)
- Helyn Bishop Scholarship (2004)
- Broadway School Alumni Scholarship (1996)
- Keith Brooks Memorial Scholarship (1996)
- Calvin Family Scholarship (2013)
- CAM Car Club Scholarship (2016)
- Hendricks R. Canida Scholarship Contest Fund (2014)
- Tiffany Lee Carter Memorial Scholarship (2003)
- Gary Chapman Memorial Scholarship Fund for the Arts (2018)
- Cheatham Family Scholarship (2021)
- Lisa Cheatham Memorial Scholarship (2008)
- The Chan Chilton Memorial Scholarship (1998)
- Class of '84 Scholarship (1995)
- Joseph V. Cline Scholarship (1994)
- Thomas D. Craft, Jr. Memorial Scholarship (2007)

- Christie Crafton Memorial Scholarship (1995)
- Norma A. Cull Memorial Scholarship (1994)
- Custer Oratory Contest Scholarship Endowment (2018)
- Deputy Alumni Scholarship (1997)
- Kenneth E. and Mary Lou Dunbar Scholarship to Honor Perry & Dunbar Drugstore Employees (2020)
- Dupont Alumni Scholarship (2000)
- Frances K. Eisan Memorial Scholarship (2013)
- Carl and Janet Glesing Family Scholarship (2025)
- Mabel C. Green Memorial Scholarship (1995)
- Hall Family Scholarship (1994)
- The Hanover College/Paul Ogle Fund (Hanover College) (1993)
- Marjorie Cornell Hare Nursing Scholarship Fund (Ivy Tech) (2012)
- Dr. Fred S. Henderson Family Scholarship Fund (2015)
- Dennis Holt Memorial Scholarship (2000)
- Glenn G. and Dorothy Ebel Huntington Memorial Scholarship (1999)
- Jefferson County 4-H Scholarship (1997)
- Ralph and Robyn Jones Family Memorial Scholarship (1998)
- Charles H. and C. Chris Keller Scholarship (1994)
- George and June Kirk Scholarship (1999)
- Kiwanis Club Scholarship in Memory of John Hawk (2022)
- Fred and Judy Koehler Family Scholarship Fund (2017)
- Dallas Lamb Visual Arts and Arts & Crafts Scholarship Fund (2022)
- Dorothy B. Lotz Scholarship (1995)
- Madison Chautauqua Scholarship for the Arts in Memory of Bob Fourhman (1994)
- MCHS Class of 1966 Scholarship Fund (2011)
- Madison Kiwanis – Connor K. Salm Scholarship (2019)
- Madison Railroad Scholarship in Memory of Robert Griffin (2023)
- Lynn A. Maricle Music Scholarship (2006)
- Dale McNeely Scholarship Fund (2009)
- Father Hilary G. Meny Scholarship (1994)
- Meyers-Hoefling Memorial Scholarship (2023)
- George and June Miller Memorial Scholarship (2014)
- Marcia S. Morrill Scholarship of the Madison Rotary Club (1996)
- Terri Nighbert Memorial Scholarship (1998)
- Carol Stier Nowlin Scholarship (2021)
- Bill Oldaker Scholarship Fund of the Madison Rotary Club (1992)
- Brad O’Leary Scholarship (2001)
- Larry and Charmaine Owens Madison Rotary Club Scholarship (2008)
- Mary Elizabeth Patterson Memorial Scholarship (2014)
- Troy Allen Pyles Memorial Scholarship (2004)
- Rainbow Youth Scholarship Fund (2022)
- Dr. Harve E. and Joyce E. Rawson Scholarship (Franklin College) (1999)
- J. Michael Sample Memorial Scholarship for Music (1997)
- Ralph and Margaret Seifert Madison Rotary Club Scholarship (2021)
- Bonnie and Printis Shelton Scholarship Fund (2018)
- Carolyn Bruce Spicer and Gene E. Spicer Nursing Scholarship (2019)
- Brian W. Stites Memorial Scholarship (1996)
- Mayor Damon Welch Memorial Scholarship (2020)
- West Sixth Law Scholarship (2025)
- Nathan Wilson Memorial Mathematics Scholarship (1998)
- Terry and Wanda Wood Memorial Scholarship (2022)
- The Wood Memorial Scholarship (1995)
- Curtis Wright Memorial Scholarship (1999)
- Joe and Kay Yager Scholarship Endowment (2025)
- Harold & Frances Yancey and Shirley Yancey Kloepfer Scholarship (2025)

## Non-Permanent Funds

These Donor Advised Funds are established with the purpose of spending their entire principal. Donors annually decide how much they want to donate to charities, make a lump sum gift into their fund (often times of appreciated stock) in that amount, and then advise the Foundation on how they would like the available money distributed to nonprofit organizations.

- Fred and Judy Koehler Charitable Fund (2016)
- Devon and Rachel Sharpe Charitable Fund (2020)
- David and Sally Webster Community Fund (2021)

## Community Foundation of Madison & Jefferson County, Inc. Receives National Recognition and Reaccreditation with Rigorous Philanthropic Standards

The Community Foundation of Madison & Jefferson County, Inc. received a three-year reaccreditation with the nation’s highest standard for philanthropic excellence in 2025. Community Foundations National Standards® establish legal, ethical, effective practices for community foundations everywhere.

The Community Foundations National Standards® program is a rigorous, comprehensive process that requires community foundations to document their policies for donor services, investments, grantmaking and administration. Receiving reaccreditation is a significant accomplishment that indicates CFMJC demonstrates a commitment to transparency, quality, integrity, and accountability as it carries out its mission. With over 500 community foundations already accredited nationwide, the program is designed to provide quality assurance to donors, as well as to their legal and financial advisors.

“This is critically important to our donors,” said CFMJC President & CEO Bill Barnes. “When people make a charitable bequest or establish a fund, they are putting their trust in us. They are counting on us to manage the investment wisely and honor their charitable wishes forever. The National Standards accreditation says our house is in order.”

CFMJC works to meet critical community needs and support local causes, including the arts, community development, preservation, and youth education and development, to name a few. This is achieved by offering a range of charitable funds allowing donors to advance a cause, support an individual organization, provide flexible support for community needs, or recommend individual grants. In addition to affirming the organization’s philanthropic services, the accreditation validates CFMJC’s grantmaking practices for the nonprofit community.

“Grantmaking is a lot like investing,” said Jenny Darnold, CFMJC Board Chair. “We need to assess risks, weigh potential gains, diversify assets, monitor performance, and operate fairly. With our National Standards accreditation, you can be assured that we’re doing just that.”

Community Foundations National Standards® is the first program of its kind for charitable foundations in the United States.

# Legacy Society

---

The Legacy Society honors individuals who have demonstrated commitment to their community by including the Community Foundation in their estate planning. Too often, these gifts are unrecognized because they come at the end of the donors' lives. The Legacy Society was established in 2003 to publicly thank these donors during their lifetimes.

## HONORING COMMITMENT TO JEFFERSON COUNTY'S FUTURE

Membership in the Legacy Society ensures that donors' charitable dollars are utilized in the way they intended. Planned giving may be used to create a new fund, contribute to any of the Foundation's existing funds, or be distributed at the discretion of the Community Foundation Grants Committee.

The Legacy Society has no minimum gift requirement, as each commitment represents a pledge to the community and its future through philanthropy. Membership is voluntary and free. There are several ways to give, including bequests, beneficiary of IRAs and insurance policies, charitable remainder trusts, and charitable gift annuities.

Leaving a legacy for your favorite charity after you are gone is easy and a great way to decrease the potential tax burden of your heirs. Here are the most common and tax-efficient planned gifts that you can note in your will/estate documents:

- Bequest – Designate an amount or percentage in your will/estate documents
- Life Insurance – Name the Community Foundation or your favorite charity as a beneficiary
- Retirement & Investment Accounts – Name the Community Foundation or your favorite charity as a beneficiary for the most tax-efficient asset to gift at death
- Appreciated Stock – Avoid your heirs paying capital gains tax on the sale of stocks, bonds, and mutual funds
- Annuities & Trusts – Leave a percentage or specific amount to the Community Foundation or to the charities that you name as beneficiary

**Always contact your professional advisors and the managing company of your assets when updating your beneficiaries!** Contact Bill Barnes at 812-274-0241 or by email at [bill@cfmjc.org](mailto:bill@cfmjc.org), and he can share with you the easy options of creating your legacy for Jefferson County's future.

In April 2025, the Community Foundation lost two members of the Legacy Society who are great examples of generosity and commitment to our community.



# JOE YAGER

Joe Yager was a farmer who lived his entire life in Jefferson County. He married his high school sweetheart Kay. In 2016, CFMJC's Bill Barnes met with Joe and Kay, along with their professional advisor Rob Barlow and then CFMJC Board Member Darleen Connolly, to discuss their estate plans. A few years later, the Yagers decided to pursue a Charitable Gift Annuity with the Foundation, which would then establish two new endowments after their passing: The Joe and Kay Yager Endowment for Youth and The Joe and Kay Yager Scholarship Endowment. Kay Yager passed away in 2022, and Joe passed away in April 2025. The Yagers, with their generous estate plans, have given more to the Foundation than anyone in its 35-year history. The new endowments will be very impactful for the youth of Jefferson County.

# PRINTIS SHELTON



Another estate gift we received in 2025 was from Bonnie and Printis Shelton. Printis Shelton was born and raised in Jefferson County, Indiana, and the love of his life, Bonnie, hailed from nearby Trimble County, Kentucky. After Printis' time serving in the U.S. Army and working for a time in New Mexico, he and Bonnie returned to Madison where Printis worked at the Jefferson Proving Grounds and they owned Shelton Realty for over 22 years. Bonnie passed away in 2017. After she died, Printis honored and carried out her wishes by establishing the Bonnie and Printis

Shelton Scholarship Fund. He put Bonnie's name first on the scholarship just like he always put her first in his life, never wavering in his love for her. Printis' attendance at the Foundation's scholarship events reinforced his perception of the legacy that Bonnie had envisioned. Over the years he continued to donate to the endowment, culminating in a generous estate gift following his passing in April 2025.

We greatly appreciate the generosity of these two men and the opportunity to help the legacy of their families live on through their endowments.

## LEGACY SOCIETY MEMBERS

\*\* indicates new members; \* indicates a member/couple who has passed away

- |                                     |                                |
|-------------------------------------|--------------------------------|
| Dwight & Rita Addleman              | H. Boone Lodge & Bill Sullivan |
| Bill & Stacy Barnes                 | Allen Manning                  |
| Tim & Kim Breeding                  | Louise Markel *                |
| Kate & Michael * Brown              | <b>Gregg Mayberry **</b>       |
| Bob & Charlotte Canida              | Gil * & Trudy McCoy            |
| Dean & Jana Clapham                 | William & Edna Meyers *        |
| Don & Peggy Clapham                 | Gerry Michl                    |
| Mary Clashman *                     | Karen Modisett                 |
| Dave & Sandy Dionne                 | Marcella Modisett *            |
| Mike & Laurie Dorsey                | Janis Petscher *               |
| Amy & Stephen Eberwine              | Don & Yolanda Phillips         |
| Bob * & Brenda Eversole             | Dale & Kay Rankin              |
| George Freeman                      | Harve & Joyce Rawson *         |
| Dick & Connie Goodman               | Wendell & Debbie Seaborne      |
| Douglas & Ann Grahn *               | David * & Betty Sebree         |
| Meredith Gregg                      | Ralph & Margaret Seifert *     |
| Glenna Hanks Wade                   | Devon & Rachel Sharpe          |
| John Hawk *                         | Printis & Bonnie Shelton *     |
| Bill & Jennifer Hensler             | Donald N. Smith                |
| Chuck Hensler                       | William Stephan                |
| Dianne Hill                         | Steven Strandmark              |
| Kelley Hoagland                     | June Taylor                    |
| Bob & Claudia Hoban                 | Henry Van Leeuwen *            |
| Al * & Connie Huntington            | Jan Vetrhus                    |
| Jim Jackson & Alice Carlson Jackson | Mary Goode Wallis *            |
| Curt & Nancy Jacobs                 | Tony & Robin Waltz             |
| Kevin Kellems                       | David & Sally Webster          |
| Chris & Karol Kirk                  | John & Maureen Wurtz           |
| Fred & Judy Koehler                 | Joe & Kay Yager *              |

# Community Foundation Donors

The names listed on the following pages are those of generous individuals, families, businesses, and organizations who made a donation in 2025 to the Community Foundation. We are truly a foundation supported by our community, as 58% of last year's donations were in the amount of \$100 and under. Thank you to everyone who gave. We are honored to help you support the causes you care about the most!

## A-F

David and Lisa Actor  
Ronald and Tracy Ahlbrand  
Carolyn Alcorn  
Laura Arico  
Maria Armbrecht  
Elizabeth Auxier and Charles Requet  
Kendra Auxier  
Pat and Robbi Auxier  
Mary Ellen Bargerhuff  
Rob and Michele Barlow  
Bill and Stacy Barnes  
Tim and Diane Barrick  
James Bartunek  
Marlene Bateman  
Jerry and Victoria Bayne  
Hilary A. Beall  
David and Ada Bear  
John Bear  
Megg Bear  
Michael Bear  
Nancy Bear  
Marta Belt  
Barry and Linda Bennett  
Kim Bennett  
Gina Bentz  
Karin Bernstein  
Julie Berry  
Katy Biallas  
Gilbert Black  
Lindsay Bloos  
Joe and Nadja Boone  
Jarrett P. Boyd  
Mary Ann and James Boyd  
Carl and Mary Boyer  
Jim and Launa Braun  
Stephanie Brawner  
Gregory Bredhold  
Tim and Kim Breeding  
Stephanie Brittain  
Kate Doyle Brown  
Martha A. Brown  
Michael and Patricia Broyles  
Becky Burch  
Daniel and Jessica Butler  
Odetta Cadwell  
Phyllis J. Calvin  
Bob and Charlotte Canida  
Christy Canida  
Janine, Clayton, and Casey Castle  
Anthony and Melinda Castor

Kyleen Center  
Sally Henderson Chalian  
Karen Chambers  
Elijah J. Chandler  
Freda Chaney  
Mark Cheatham  
Cathy Chilton  
Dean and Jana Clapham  
Cathy Cleveland  
Emilie and John Coakley  
Doug and Mary Sue Cockes  
Bea Collins  
John and Darleen Connolly  
Helen L. Cope  
Lawrence and Rebecca Corson  
Dale and Kathy Crafton  
Larry and Valecia Crisafulli  
Paul and Cherri Cronen  
Nancy Crozier  
Brenda Cummins  
Julie V. Curtis  
Mark and Jenny Darnold  
Yvonne Davis  
Laurie DeCapio  
Linda DeLuca  
Calvin and Billie DeVearly  
Pam DeVearly  
Wayne and Gina DeVearly  
Celestra Dewey  
Karen Dickie  
Sandy Dierdorf  
Dave and Sandy Dionne  
Jim and Carri Dirksen  
Molly Dodge  
Michael and Laurie Dorsey  
Carol Dozier  
Sylvia Duke  
Jane Durst  
Jackie Eggenspiller  
Brian and Laura Elbogen  
Brenda Eversole  
Lindsay Faulstick  
Robert Feltner  
Joseph and Evelyn Ferguson  
Deborah and Greg Fields  
Brenda Finnegan  
Elizabeth Fisher and Brian Cox  
George Anne Fisher  
James and Anna Fisher  
Anne and Jeff Fisse  
Josh and Barb Ford  
Andrew and Kendra Forrester  
Philip and Eileen Fowler

## G-L

Bev Gaffney  
Tracy Gaglein  
Todd and Alicia Gettelfinger  
Betty Gish  
David and Denise Glesing  
Donna Godward  
Tom and Sandy Gold  
Greg and Lindsey Goodknight  
Robin Goodknight  
Ann Selby Goodman  
Ann Graves and Ken Ward  
David and Deb Gray  
Lisa Gray  
Pam Gray  
Gene and Sarah Green  
Natalie Green  
Meredith Gregg  
Maria Grote  
Rick and Leslie Grote  
Chris and Kathy Guess  
Carolyn Gunter  
David and Sheridan Hadley  
Jessica Hall  
Lynn Hall  
Tammy Hall  
Joan Hamilton  
Susanne Hamner  
George and Diana Hand  
Glenna Hanks Wade  
Carole and Michael Hanson  
Lisa P. Hanson  
Renee Hanson  
Doug and Tricia Hardin  
Sara Hare  
Amanda Harsin  
Paula L. Hartman  
Ann Haw  
Koko Heath  
Gwendolyn Heaton  
Mary Heaton  
John and Lori Heitz  
Wilma S. Henderson  
Chuck Hensler  
Bill and Jennifer Hensler  
Daniel and Jean Herron  
Bill and Carol Hertz  
Dee Hertz  
Jeanette Hertz  
Joe and Wanda Hertz  
Kelli Hertz

Jason and Becky Hester  
Karen Hicks  
Bob and Claudia Hoban  
Dan and Laura Hodges  
Dottie S. Horine  
Mary Anne Horine  
Keith and Karen Howard  
Janet Huber Lowry  
Connie Huntington  
Donald and Joyce Imel  
Taleen Jackson  
Curtis M. Jacobs  
Curt and Nancy Jacobs  
Leah James  
Phoebe James  
Eric and Renee Johanson  
Kay Johanson  
Amy Johnson  
Betsy Johnson  
Nancy Jones  
Terry Kapfhammer  
Colleen Keith  
Kevin S. Kellems  
Tracy Keller  
Gary and Sue Kemper  
Heidi Kendall-Sage  
Michael and Victoria Kennedy  
Esther Ketcham  
Chris and Karol Kirk  
DeAnn Klinedinst  
Shirley Kloepfer  
Mary Kraft  
Gary and Donna Lamb  
William Lane  
Paul and Paula Lee  
Ralph and Bonnie Lee  
Keith and Ellen Levine  
Josh and Beth Lichlyter  
Betty Liles  
Gerri Liter  
Ray and Sue Livers  
H. Boone Lodge and William Sullivan  
Mary Carol Lorton  
Scott and Kathy Lynch  
Linda Lytle

## M-R

Betty Maddox  
Tanner and Sarah Mahoney

Allen Manning  
Lynn Maricle  
Lee and Georgia Marnett  
Mary Jane Maslyar  
Lonnie Mason  
Mona Matheney  
The late Johnny and June McGovern and family - Amy, Ashley, John, & Andrea  
Chuck and Cindy McKay  
Mike and Tammy McKay  
Marilyn McQueen  
Sally McWilliams  
Dave and Susie Meese  
Dale and Walter Messick  
Candy Meyer  
Becky and Paul McCoy  
Andy and Heather Minor  
Karen Modisett  
Michael Moore  
Elaine Morrill  
Cari Morrison-Bear  
Sabra Morris  
Michelle Mouser  
Sally Muessel  
Kip Neal  
Anna Nelson  
Charles and Michaelene Nelson  
Ruby Nichols  
Margaret Nowling  
Bill and Susan Ohlendorf  
Jim and Margo Olson  
Charmaine Owens  
Leroy and Sue Palmer  
Sandy Palmer  
Brenda Partridge  
Binnie Phillips  
Donald and Veronica Phillips  
Gary and Franny Phillips  
Bob and Alanagh Pimlott  
Debbie Powell  
Mark Prickett and Heather Cooper  
William Pridmore and Melissa Frey  
Tom and Karen Pritchard  
Sharon Rahman  
Starla Raley  
Desna Ratcliff  
Linda Rea  
Judith Reasoner  
John and Sue Rees

Shelli Reetz  
Larry Ricci  
Judy Richardson  
Charles and Mary Pat Ricketts  
Bill and Gloria Risk  
Connie Risk  
Elaine Risk  
Ann Roahrig  
Susanne S. Robbins  
Alice Rogers  
Ann M. Roller  
Katherine Rosenberg  
Matt and Anna Rousch

## S-Z

Pam Sandoz and Bill Rowlett  
The Schafer Family  
Jill Schafer  
Annie Schroeder  
Robert Schwartz and Judy Staicer  
Larry and Sue Schweinhardt  
Flower Shaffstall  
Devon and Rachel Sharpe  
Wanda Shelley  
Chris and Melissa Shelton  
Danny and Treva Shelton  
Lavita McQueen Shelton  
Lisa Shelton  
Printis Shelton  
Libby Sheppard  
Douglas and Eunice Siefert  
Austin Sims  
Sandra Skiles  
Linda Sloffer  
Lori Slygh  
Happy Smith  
Paul and Darlena Sommer  
Kirstin Springmeyer  
Nancy Sprunger  
Pat and Sue Stack  
Susan Stahl  
Suzanne Standerford  
Hilary Steinhardt  
John and Brenda Steinhardt  
Joseph A. Steinhardt  
Phyllis Steinhardt  
Jacquie Stewart  
Gena Stiver Stanek

Kay Stokes  
Steve Strandmark  
Abby Suiter  
Bill and Rosemary Sullivan  
Kate Sutter  
James and Kaaren Tatera  
Hannah Taylor  
Jack and Karen Taylor  
Karen Todd  
Elizabeth Thomas  
Michael and Vickie Thomas  
Priscilla Torline  
Mark and Nancy Totten  
Patty Trimble  
Nancy Underwood  
Marianne Ungru  
Karen VanderPloeg  
Betty Varble  
Jan Vetrhus  
Betsey Vonderheide  
Jane Vonderheide  
Tricia Vos  
Robert and Chris Wall  
Teresa Waller  
Tony and Robin Waltz  
Nancy Watson  
David and Sally Webster  
JD Webster  
Randy and Donna Wehner  
Ginny Welch-Callis  
Donald and Joyce Wells  
Julie Wells  
Evelyn Wheeler  
Joe and Cyndi White  
Sharyn L. Whitman  
Don and Jill Wiest  
Tony and LeTiscia Wilson  
Stephanie Withered  
Jeff and Michelle Wuensch  
Sally Wurtz  
Jerry and Teresa Yancey

## Corporations & Organizations

A. Dattilo Fruit Co., Inc.  
Arvin Sango Foundation, Inc.  
Bulk Truck and Transport Service, Inc.  
Carriage House of Madison, LLC  
Crafton Brothers Properties  
Dupont Alumni Association

First Christian Church  
Friends of Camp Louis Ernst  
Friends of the Madison-Jefferson Co.  
Public Library  
Gardner Insurance Agency Inc.  
German American Bank  
Girls Inc. of Jefferson County  
Grote Industries, LLC  
Hanover Traffic, LLC  
Haskell & Morrison Funeral Home  
Hoosier Trails Council, BSA  
Jefferson County Historical Society  
Jefferson County Veterans Council  
Jenner Law Office  
JWS Corp  
Lanier Mansion Foundation  
Lilly Endowment Inc.  
Lytle Welty Funeral Chapel, Inc.  
Madison Area Arts Alliance, Inc.  
Madison Chemical Company, Inc.  
Madison-Jefferson Co.  
Humane Society  
Madison Precision Products Inc.  
Madison Railroad  
Madison Rotary Club  
Madison Travel Company LLC  
Mane Attractions  
Morgan & Nay Funeral Centre  
North Vernon 2nd United Methodist  
Old Apple House  
Pets Doc Veterinary Clinic  
PFLAG Hanover Inc.  
Rainbow River Club  
River Rat Rodz, LLC  
River Valley Insurance Group  
Steinhardt Enterprises  
Teton Corporation  
The Benevity Community  
Impact Fund  
The Bindley Foundation  
The Eleanor T. Birk Foundation  
The Kroger Company  
Treasurer of Jefferson County  
Tri Kappa Beta Omega Chapter  
West Sixth Law, LLP  
YourCause Global Good Network

## Trusts & Estates

Anna & Charles O'Banion Trust  
Dennis Niles Bray Estate

Estate of Edna Meyers  
Estate of Printis Shelton  
Estate of Robert D. Hughes  
Irrevocable Trust  
Estate & Trust of Joe E. Yager

## In Honor

**Julie Curtis**  
Lawrence and Rebecca Corson  
**Yvonne Davis**  
Keith and Karen Howard  
**Lisa Hanson**  
Renee Hanson  
**Allen Manning**  
Printis Shelton  
**Chuck Requet and Elizabeth Auxier**  
Jarrett Boyd  
**Ivan Rimstidt**  
Bob and Claudia Hoban

## In Memory

**Jan Allen**  
Michael and Patricia Broyles  
**Maurice Auxier**  
Ralph and Bonnie Lee  
River Valley Insurance Group  
**Michele Barlow**  
Michael and Patricia Broyles  
Lynn Maricle  
Bill and Susan Ohlendorf  
Bill and Gloria Risk  
Julie Wells  
**Ginger Barnes**  
Elizabeth Auxier and Charles Requet  
**Clint Bear**  
John Bear  
Anne and Jeff Fisse  
David and Sally Webster  
**John Bear**  
Michael Bear  
Janine, Clayton, and Casey Castle  
Doug and Mary Sue Cockes  
Brenda Eversole  
Ann Graves and Ken Ward  
David and Deb Gray  
Chris and Karol Kirk  
The late Johnny and June  
McGovern and family - Amy,  
Ashley, John, & Andrea

Jerry and Teresa Yancey  
**Jerry Beech**  
John and Darleen Connolly  
**Joel Breeding**  
Tim and Kim Breeding  
**Enzo Butler**  
Elizabeth Auxier and Charles Requet  
**John Clapham**  
Dean and Jana Clapham  
**Hal Davis**  
Yvonne Davis  
**Wauneta DeVear**  
The Conard and McCauley families  
Calvin and Billie DeVear  
Pam DeVear  
Wayne and Gina DeVear  
Brenda Eversole  
James and Anna Fisher  
Jeanette Hertz  
Dottie S. Horine  
Eric and Renee Johanson  
Kay Johanson  
Becky and Paul McCoy  
Bill and Gloria Risk  
Pam Sandoz and Bill Rowlett  
Larry and Sue Schweinhardt  
Lavita McQueen Shelton  
Joe Steinhardt  
John and Brenda Steinhardt  
Donald and Joyce Wells  
**Alex Feltner**  
Robert Feltner  
Teresa Waller  
**Matt Forrester**  
Andrew and Kendra Forrester  
**Jeanette T. Goodman**  
Ann Selby Goodman  
**Dr. Douglas Grahn**  
Keith and Ellen Levine  
**Arline Gullion**  
Girls Inc. of Jefferson County  
Susan Stahl  
**Bonnie Hare**  
Sara Hare  
Happy Smith  
Nancy Sprunger  
**Patricia Helmuth**  
Gary and Sue Kemper

**Mary Holt**  
Barry and Linda Bennett  
Michael and Victoria Kennedy  
Lonnie Mason  
Charles and Michaelene Nelson  
Bill and Rosemary Sullivan

**Al Huntington**  
Andrew and Kendra Forrester

**Jane Jacobs**  
Dave and Susie Meese

**Billy Law, Jr.**  
Chuck Hensler

**Georgia Marnett**  
Bill and Susan Ohlendorf

**Mary Kay McCubbin**  
Tim and Kim Breeding  
Jim and Carri Dirksen  
Leslie Grote

**Mickey Nethery**  
Taleen Jackson

**Terri Nighbert**  
Gwendolyn Heaton

**Barbara Peddie**  
Megg Bear  
Jim and Carri Dirksen  
Chuck Hensler  
Paul and Paula Lee

**Linda Pilcher**  
Chuck Hensler

**Connie Rhoten**  
Chuck Hensler

**Julie Hennegan Richardson**  
Gary and Sue Kemper

**Estella Martha Rosenberg**  
Tim and Kim Breeding

**Mary Lou Sams**  
Chuck Hensler

**Printis Shelton**  
Gilbert Black  
Gregory Bredhold  
Deborah and Greg Fields  
Ralph and Bonnie Lee  
Allen Manning  
Danny and Treva Shelton  
Tricia Vos

**John Stahl**  
Jim and Carri Dirksen  
Lynn Maricle  
Teton Corporation

**Norbert Anthony "Tony" Steinhardt, Jr.**  
Bill and Stacy Barnes  
Tim and Diane Barrick  
Hilary A. Beall  
Nancy Bear  
The Bindley Foundation  
Joe and Nadja Boone  
Carl and Mary Boyer  
Tim and Kim Breeding  
Odetta Cadwell  
Mark Cheatham  
Emilie and John Coakley  
Dale and Kathy Crafton  
Larry and Valecia Crisafulli  
Paul and Cherri Cronen  
Laurie DeCapio  
Billie DeVear

Brenda Eversole  
Elizabeth Fisher and Brian Cox  
James and Anna Fisher  
Friends of Camp Louis Ernst  
Todd and Alicia Gettelfinger  
Greg and Lindsey Goodknight  
Ann Selby Goodman  
George and Diana Hand  
Carole and Michael Hanson  
Haskell & Morrison Funeral Home  
Bill and Carol Hertz  
Joe and Wanda Hertz  
Jason and Becky Hester  
Hoosier Trails Council, BSA  
Donald and Joyce Imel  
Jenner Law Office  
Kay Johanson  
Kevin S. Kellems  
Gary and Sue Kemper  
William Lane  
Scott and Kathy Lynch  
Lynn Maricle  
Lee and Georgia Marnett  
Dale and Walter Messick  
Mark Prickett and Heather Cooper  
Tom and Karen Pritchard  
John and Sue Rees  
Bill and Gloria Risk  
Ann M. Roller  
Matt and Anna Rousch  
Paul and Darlena Sommer  
John and Brenda Steinhardt  
Joseph A. Steinhardt

James and Kaaren Tatera  
Jack and Karen Taylor  
Donald and Joyce Wells  
Tony and LeTiscia Wilson  
Jeff and Michelle Wuensch

**Charles "Ron" Taylor**  
John and Darleen Connolly

**Dave Thomas**  
David and Ada Bear

**Greg Thomas**  
Nancy Bear

**Damon L. Welch**  
Andrew and Kendra Forrester  
Gary and Franny Phillips  
Ginny Welch-Callis

**Stephen "Steve" White**  
Mary Ann and James Boyd  
Ann Graves and Ken Ward  
John and Lori Heitz  
Dan and Laura Hodges  
Curt and Nancy Jacobs  
William Pridmore and Melissa Frey  
Michael and Vickie Thomas



# G1K

## A NEW COLLECTIVE GIVING OPPORTUNITY TO CREATE POSITIVE, LASTING CHANGE

In 2025, David E. and Sally Kirk Webster, and their son JD, approached the Community Foundation with an idea of collecting donations that would then be granted out in one large impactful grant. That idea led to the creation and launch of the G1K program.

G1K is an opportunity for donors to act as one body to make one large impact grant to a nonprofit organization serving Jefferson County, Indiana. Donors are asked to give an annual \$1,000 tax-deductible donation to a pass-through fund at the Community Foundation of Madison & Jefferson County, Inc. One hundred percent (100%) of each \$1,000 donation to the pass-through fund goes directly to award grants through a competitive application process thanks to the administrative fees for this fund being covered by an anonymous donor.

The amount of dollars raised in the calendar year (January 1 – December 31) for the pass-through fund will be the total grant amount available. An independent committee of Community Foundation volunteers who are not G1K members will review submitted applications and recommend five (5) applications to be voted on by the membership. Ballots will be emailed (or sent by mail or completed in person, if preferred), with voting completed using a ranking system. Applications will be ranked using a 1-5 scale, with 1 being the top vote of the ranking. The application receiving the lowest cumulative score will be determined as that year's grant recipient. **Everyone's vote makes an impact!** Annual grant cycles will occur in the spring.

Anyone who joins at any time in 2026 will be a Charter Member of the program. The G1K program is open to individuals, couples, businesses, and organizations. Donating \$1,000 equals one vote in the competitive grant award process.\* Votes are limited to one (1) per individual, couple, or business/organization.

## Charter Membership Categories Include:

**Individually**  
\$1,000 = 1 vote

**As A Couple**  
\$1,000 = 1 vote; \$2,000 = 2 votes (each spouse/  
partner receives their own individual vote)

**As A Business/Organization**  
\$1,000 = 1 vote

\*An individual, couple, or business/organization may donate over \$1,000, but will still only receive one (1) vote.

### DAVID E. AND SALLY KIRK WEBSTER

“Impacting Jefferson County through collective giving creates positive, lasting change in our community. Together, we can fund significant projects in ways none of us could accomplish alone. We invite you to be one of 100 or more like-minded individuals who believe in changing Jefferson County for the better.”



The G1K Launch Party event was held on January 29, 2026, at the Picker House of the Fairfield Inn & Suites in downtown Madison. G1K Steering Committee member JD Webster introduced the basics about the program and shared a quote from his parents (see above).



The Community Foundation is excited to see the G1K program grow and make impactful change to our local 501(c)3 organizations! For questions about the G1K program or how to become a member, contact Bill Barnes at 812-265-3327 or bill@cfmjc.org, or visit the G1K program webpage at [www.cfmjc.org/g1k](http://www.cfmjc.org/g1k).



# Women's Giving Circle

## Empowering Others To Make A Difference

Formed in 2012 by 12 local women, the Women's Giving Circle of Jefferson County (WGCJC) is a philanthropic group of all ages and backgrounds. By combining their financial strength, these donors collectively make a positive change for women and children throughout Jefferson County.

Anyone in Jefferson County is welcome and invited to join. Membership consists of an annual tax-deductible contribution of \$100. Each membership has 75% placed in a pass-through field of interest fund, while the remaining 25% is invested in the Women's Giving Circle Endowment in Memory of Bonnie Hare permanent fund. Junior Memberships are available for youth ages 21 and under for \$50 and are split \$25/\$25. At the end of 2025, the WGCJC Endowment had a value of \$209,030.37. All assets of the WGCJC are held and maintained at the Community Foundation of Madison and Jefferson County.



## WGCJC GOALS

**1** Make a significant difference in the community by empowering donors to contribute time, talents, and monetary resources to the needs of women, children, and families

Educate and increase awareness of the needs of local women, children, and families

**2**

**3** Provide social opportunities, events, and exposure for donors in our community

## WGCJC FALL OPEN HOUSE

On the evening of October 21, 2025, the Thomas Family Winery was the perfect setting for the WGC Fall Open House. This tradition, which began in 2022, is a wonderful time for current members and those interested in joining the Giving Circle to meet for food and fellowship. Guiding Circle members also shared the impact that membership plays in the role of awarding grants to programs and projects that benefit our local women and children. We'd love to have you join us at a future Open House!



## 2025 WGC EVENT SPONSORS

The Women's Guiding Circle would like to thank the following individuals, organizations, and businesses for sponsoring the WGC's Fall Open House and Annual Event:

Helen and Mike Cope | Crafton Brothers Properties | Kathy and Dale Crafton |  
First Christian Church – Disciples of Christ | Tracy Geglein | Leslie Grote – River West  
Antique Mall | Shelli Reetz – Licensed Mental Health Counseling |  
Hilary Steinhardt - Steinhardt Enterprises | Joyce Wells

**Thank you!!**



## *Because of Her*

Women's Giving Circle Endowment  
Fundraising Campaign

For 2025, the Women's Guiding Circle announced the Because of Her: Women's Giving Circle Endowment Fundraising Campaign. The members of the Guiding Circle recognized that the need requested during the annual WGC Grant Cycle is considerably more than the funding that is available from memberships and the endowment. By fundraising specifically for the endowment, this will help close this gap and increase the group's perpetual grant making capacity for the needs of tomorrow and for generations to come when daughters, granddaughters, and nieces are leading the WGC. Thanks to members and the community's generosity, the campaign goal of \$20,000 specifically for the endowment was met by the December 31, 2025, deadline! Although the fundraising campaign has concluded, any donation amount to the WGC Endowment is greatly appreciated! We welcome donations in honor or in memory of the special women who have impacted the lives of our donors.

*Because of Her – we are able to do so much for our community from her generous donation*

*Because of Her – and the children of our community that we help through the annual grants*

*Because of Her – our daughters, granddaughters, and nieces are the future of WGC*

*Because of YOU – we met our fundraising goal!*



## Thank You To Our *Because Of Her* Endowment Campaign Donors

Anonymous  
Laura Arico  
Maria Armbrecht  
Kendra Auxier  
Mary Ellen Bargerhuff  
Stacy Barnes  
Hilary Beall  
David and Ada Bear  
Karin Bernstein  
Kathleen Biallas  
Nadja Boone  
Launa Braun  
Stephanie Brawner  
Kate Brown  
Martha Brown  
Phyllis Calvin  
Bob and Charlotte Canida  
Freda Chaney  
Cathy Cleveland  
The Conard and McCauley families  
Helen Cope  
Dale and Kathy Crafton  
Brenda Cummins  
Calvin and Billie DeVear  
Pam DeVear  
Wayne and Gina DeVear  
Celestra Dewey  
Karen Dickie  
Sandy Dierdorf  
Jim and Carri Dirksen  
Jane Durst  
Brenda Eversole  
George Anne Fisher  
James and Anna Fisher  
Tracy Gaglein  
Ann Selby Goodman  
Maria Grote  
Rick and Leslie Grote  
Lisa Hanson  
Paula Hartman  
Koko Heath  
Bill and Jennifer Hensler  
Dan and Jean Herron  
Dee Hertz  
Jeanette Hertz  
Kelli Hertz  
Karen Hicks  
Dottie Horine  
Mary Anne Horine  
Eric and Renee Johanson  
Kay Johanson  
Terry Kapfhammer

Heidi Kendall-Sage  
DeAnn Klinedinst  
Shirley Kloepfer  
Ralph and Bonnie Lee  
Sue Livers  
Linda Lytle  
Lynn Maricle  
Becky and Paul McCoy  
Cindy McKay  
Karen Modisett  
Sally Muessel  
Anna Nelson  
Ruby Nichols  
Bill and Susan Ohlendorf  
Jim and Margo Olson  
Binnie Phillips  
Donald and Veronica Phillips  
Gary and Franny Phillips  
Bob and Alanagh Pimlott  
Starla Raley  
Desna Ratcliff  
Judith Richardson  
Bill and Gloria Risk  
Susie Robbins  
Pam Sandoz and Bill Rowlett  
Tonya Schmidt  
Larry and Sue Schweinhardt  
Flower Shaffstall  
Wanda Shelley  
Lavita McQueen Shelton  
Sandra Skiles  
Nancy Sprunger  
Susan Stahl  
Joe Steinhardt  
John and Brenda Steinhardt  
Phyllis Steinhardt  
Elizabeth Thomas  
Nancy Totten  
Patty Trimble  
Nancy Underwood  
Betty Varble  
Robin Waltz  
Donna Wehner  
Don and Joyce Wells  
Julie Wells  
Sally Wurtz

# WGCJC ANNUAL CELEBRATION

The Women's Giving Circle of Jefferson County wrapped up 2025 with 204 members! From the membership dollars, extra donations collected, and funds available from the endowment, \$20,973 in grants were awarded to nine nonprofit organizations that serve women and/or children in Jefferson County.



The 2025 WGC members were excited to attend the annual celebration event on April 7, 2026, at Historic Eagle Cotton Mill / Fairfield Inn & Suites. Attendees had the opportunity to give back to the nonprofit community by donating art supplies for the Madison Area Arts Alliance for their various camps and workshops. Members voted on accepting the grant recommendations prior to the event and were happy to hand out the grant awards during the evening's festivities. The winning organizations and projects are featured on page 40.

# 2025 GIVING CIRCLE GRANTS



**Children's Advocacy Center of Southeastern Indiana - \$1,500**  
*CAC Sound Improvement* – to purchase hall and stairway runners for the organization's office to help absorb sound and provide fewer distractions during forensic interviews



**Hoosier Trails Council, BSA - \$2,130**  
*Scouting of America* – to provide financial assistance for scouts of a newly created troop serving families living in rural Jefferson County



**Jefferson County Sheriff's Office - \$1,920**  
*Community/Juvenile Outreach Programming* – to support outreach programming for youth to promote positive behavior engagement opportunities with law enforcement officers



**Madison Area Arts Alliance - \$1,763**  
*ARTsy Camp* – to support the weeklong camp introducing students to different art forms and fostering creativity



**Madison Ulster Project - \$960**  
*Upstanders Workshop and Time of Discovery* - to cover fees to allow Ulster Project participants to attend programming at the Nancy & David Wolf Holocaust & Humanity Center In Cincinnati, Ohio



**Madison Youth Unlimited, Inc. - \$6,950**  
*Tasty Food, Tight Budget* – to purchase food and supplies for a 4-week cooking and nutrition workshop series for Jefferson County residents experiencing nutrition insecurity



**Recovery Café Madison - \$2,700**  
*School for Recovery: Women's Empowerment Workshop Series* – to provide materials and supplies for workshops to help women in recovery from substance use, mental health challenges, trauma, incarceration, and life instability



**Southwestern Pool Boosters - \$1,550**  
*Instructor for Community Water Aerobics Classes* – to provide a water aerobics instructor for winter classes open to the community at the Southwestern High School pool



**Trinity United Methodist Church - \$1,500**  
*Trinity Shoe Program* – to purchase new sneakers and socks for local children in need

# JOIN NOW!

The Women's Giving Circle is open to everyone. You can also dedicate your membership or extra gift in memory or in honor of a special person in your life.

Call **812-265-3327** or email **julie@cfmjc.org** and ask Julie Wells for more information!

## HOW WE GIVE

The WGCJC makes grants annually to organizations that have the greatest potential to help the women and children of Jefferson County. Grants are focused on the following four fields of interest, with the specific purpose of benefitting women and/or children:

- Education
- Economic Empowerment
- Physical and Mental Health
- Violence and Crime Prevention

The Grants Sub-Circle reviews applications and provides grant recommendations to the general membership, which then votes on the recommendations prior to the annual meeting/dinner in April. Since its creation, the WGCJC has granted \$275,953 to nonprofit organizations serving the women and children of Jefferson County.

# Leadership

## JEFFERSON COUNTY

Established in 2017, Leadership Jefferson County (LJC) is a bi-weekly, 11 session course comprised of topics to give participants a better understanding of resources and relationships in Jefferson County. The program was created as an action project of the “Building a Positive Community Through Collaboration & Leadership” initiative of the Envision Jefferson County project. That initiative was one of six created through community conversations and surveys hosted by the Envision team.

# Topics Covered

Topics covered by the course in 2025 included:

Agriculture & Natural Resources  
Business & Entrepreneurship  
Community Health Education  
Government Agencies & Organizations  
History

Industry & Economic Development  
Nonprofits & Volunteerism  
Social Services  
Tourism

CFMJC President & CEO Bill Barnes spoke with the class about Nonprofits & Volunteerism during two of the sessions. He walked participants through healthy nonprofit governance practices and an overview of what it means to be a 501(c)3 charitable organization. Participants were then encouraged to use the knowledge and resources that they gained during the class experience to explore where they may want to volunteer and give back to Jefferson County. LJC greatly appreciates Grote Industries, LLC and their continued sponsorship of our end-of-course celebration and luncheon in May.

Graduates of LJC have enjoyed their experiences and the knowledge they have gained about the community, including 2025 LJC Graduate Kate Sutter. “Leadership Jefferson County helped me see my hometown with fresh eyes – highlighting the many moving parts, passionate people, and hidden strengths that make Jefferson County truly special. It deepened my pride in our community and inspired me to be more intentional in contributing to its continued growth. Such a worthwhile program and experience!” 2025 marked the seventh graduating class of the program. The future looks bright as the LJC graduates and current participants continue to be examples of engaged and connected community members of Jefferson County.





## Class of 2025 Graduates

Tiffany Biesen – Norton King’s Daughters’ Health | Sayra Hoskins – German American Bank | Sarah Judy – Arvin Sango | Merry Mattox – Madison Area Arts Alliance | Hannah McMahan – Arvin Sango | Kennedy Napier – First Financial Bank | Emily Powers – River Valley Resources | Lyndsey Ritchie – VisitMadison, Inc. | Kalyn Robison – Jefferson County Health Department | Bryan Shaw – City of Madison | Taylor Shaw – Hanover College | Jacob Smith - Historic Eagle Cotton Mill, Fairfield Inn & Suites | Angel Snell – Ohio Valley Opportunities | Chip Snyder – Hanover College | Angela Spurgeon – Ohio Valley Opportunities | Kate Sutter – Ivy Tech Community College – Madison | Hannah Taylor – Grote Industries | Amanda Thompson – Habitat for Humanity of Southeast Indiana



### KATE SUTTER | 2025 GRADUATE

“Leadership Jefferson County helped me see my hometown with fresh eyes – highlighting the many moving parts, passionate people, and hidden strengths that make Jefferson County truly special. It deepened my pride in our community and inspired me to be more intentional in contributing to its continued growth. Such a worthwhile program and experience!”

# 2025 Grants

Since its creation in 1991, the Community Foundation of Madison and Jefferson County has invested over \$20 million back into Jefferson County through grants and scholarships. In 2025, the Community Foundation granted a total of \$1,334,228 from its endowments, with \$434,078 of that total coming from Flexible Community Funds and Field of Interest Funds through the annual Competitive Grant Cycle.



**BILL BARNES | CFMJC PRESIDENT & CEO**

“Thanks to the generous donors who have established Flexible Community Fund and Field of Interest Funds at the Foundation, we are able to meet the needs of nonprofits serving our communities when it is needed most. These funds all work together to make the largest impact for new programs and projects that benefit our residents all across Jefferson County.”

To be considered for funding through the annual Competitive Grant Cycle, local nonprofit agencies submitted an online application. Selected finalists were then emailed any additional questions or met with members of the Foundation’s Grants Committee to learn more about the organizations, their projects, and goals. Organizations that received 2025 competitive grant funding included:

- Canaan Events & Enrichment Foundation, Inc. \$30,000**  
to support the restoration and preservation of the historic Canaan Indian Trails building
- Children’s Advocacy Center of Southeastern Indiana \$25,000**  
to improve Forensic Interview services in Jefferson County
- Christ Episcopal Church \$10,000**  
to support the SUCCESS Arts Scholarship program providing arts-related lessons to low-income students in the community
- Friends of the Jefferson County Animal Shelter \$3,700**  
to support the creation of the organization to provide outreach and advocacy efforts on behalf of the animal shelter
- Hanover Township Volunteer Fire Department, Inc. \$10,000**  
to purchase an inflatable ice rescue deployment craft and ice rescue suits for water rescue emergencies
- Historic Madison, Inc. \$15,000**  
to provide ADA compliant accessibility to the historic Jeremiah Sullivan House
- Indian-Kentuck Baptist Church \$10,000**  
to purchase food for the church’s community food pantry
- Ivy Tech Foundation/Ivy Tech Community College-Madison \$20,000**  
to launch the Ivy ROOTS workforce development initiative to provide local internships for students
- Jefferson County Historical Society \$4,298**  
to purchase a new copier/printer
- Jefferson County Youth Shelter \$3,500**  
to purchase a back-up power generator and carpet needs for the shelter facility

- Junior Achievement of Kentuckiana, Inc. \$5,000**  
to support the *Inspiring Futures: Comprehensive High School Programming for Madison Consolidated School Students* program
- Kent Volunteer Fire Company \$20,000**  
to purchase Grain Bin rescue equipment and firefighter turnout gear
- Lydia Middleton Elementary \$4,500**  
to create a Rooftop Sensory Garden to enhance the school’s rooftop patio and outdoor classroom experience
- Madison Area Arts Alliance \$4,500**  
to support the renovation of the SPOT Gallery to provide extra office space and a reception area during special events
- Madison Main Street Program \$2,780**  
to purchase registrations to the *InTents: National Farmers Market Conference*
- Madison Performing Arts Foundation \$1,800**  
to support the *Horszowski Trio* concert
- Madison Township Volunteer Fire Company \$34,000**  
to purchase new respirator equipment and masks for the company’s firefighters
- Norton King’s Daughters’ Health \$100,000 (multi-year)**  
to support the creation of the new EMS Transport Hub classrooms and conference center
- Recovery Café of Madison \$40,000**  
to support operating costs and community outreach efforts
- River Valley Resources, Inc. \$20,000**  
to support the Jefferson County Adult Education program
- Saluda Township Trustee/Saluda Township Park \$35,000**  
to support improvements at Saluda Township Park
- Southwestern Preschool \$35,000**  
to purchase new playground equipment to include accessibility for all children

**- THE COMMUNITY FOUNDATION’S -  
COMPETITIVE GRANT CYCLE**

The Community Foundation’s Competitive Grant Cycle *begins accepting online applications every year on June 1.* Nonprofit organizations with programs and projects that serve Jefferson County, Indiana, are encouraged to discuss their ideas with CFMJC President & CEO Bill Barnes or Finance & Program Officer Kelly Miller to see if their application would be a good fit for the cycle. *More information about the annual Competitive Grant Cycle, and other helpful resources, are available at [www.cfmjc.org/grants](http://www.cfmjc.org/grants).*

**The 2025 Competitive Grants Cycle awards were made possible by the following Community Foundation's Flexible Community Funds and Field of Interest Endowment Funds:**

- 7 Hugs: The David E., Sally Kirk, JD, & Stephanie Webster Family Endowment
- Gerald E. Amos Memorial Endowment Fund
- Bill & Stacy Barnes Charitable Endowment
- Eleanor T. Birk Foundation Community Fund
- Eleanor T. Birk Foundation Youth Fund
- Tim & Kim Breeding Family Endowment
- Greg Cloud Memorial Endowment
- Community Endowment for the Arts
- Community Foundation Board Member & Alumni Fund
- Barbara Ann Cowan Memorial Fund
- Cronen/Marsiglio Family Unrestricted Endowment
- Harold A. "Hal" Davis Memorial Endowment for the Arts
- First Financial Bank Community Fund
- Gardner Insurance Agency Community Fund
- German American Bank Endowment
- Douglas & Ann Grahn Endowment
- Walter A. & Jean Graham Greiner Memorial Fund
- Hanover Fund for Youth
- Jefferson County Enrichment Endowment
- Jenner Family Endowment
- The Lineburg Family Endowment
- Madison Precision Products Community Fund
- Gil & Trudy McCoy Unrestricted Endowment
- Kevin & Mary Kay McCubbin Endowment
- The John Morgan Family Fund
- Rinda Rains Memorial Endowment
- Julius "Bud" & Irene Ritter Memorial Endowment
- Neida Rogers Memorial Endowment for Music
- Margaret Francis Seifert & Gregory A. Russell Endowment
- Devon & Rachel Sharpe Endowment
- Sherman, Barber, & Mullikin Fund for Jefferson County
- Spirit's Fund
- Norbert A. "Tony" Steinhardt, Jr. & Phyllis Steinhardt Family Endowment
- Nancy J. Strandmark Memorial Fund
- Ann Suchocki & Jim Mason Family Fund
- Vehicle Service Group Employee Fund
- Vonderheide Family Community Appreciation Fund
- George Wagoner, MD & Marjorie Jefferies Wagoner, MD Fund
- Robert E. Wall DDS Fund
- Don R. Wallis Memorial Fund



# SUPPORTING FIRST RESPONDERS



In April 2025, the Community Foundation awarded the Norton King's Daughters' Health Foundation (NKDHF) \$100,000 to support the creation of a new EMS Transport Hub on the hospital's hilltop campus. This multi-year grant will help build the classrooms and conference center within the hub. The CFMJC Board of Directors approved this grant because they understand how crucial emergency medical services are in providing vital, often lifesaving, pre-hospital care.

"Our Board of Directors greatly appreciate these first responders and wanted to support their work which covers every person in Jefferson County," stated CFMJC President & CEO Bill Barnes.

A grant of this size and nature is made possible by Flexible Community Funds. Flexible Community Funds give the Community Foundation Grants Committee and Board of Directors flexibility to address the ever-changing needs of Jefferson County's residents.

"We are truly grateful for the support of the Community Foundation for their generous \$100,000 grant toward building a new EMS transport hub to strengthen emergency services in our community," said NKDHF Director Rachel Sharpe.

The new, more strategically located EMS Transport Hub will include, with the classrooms and conference center for training, an expanded garage, upgraded technology, and improved quarters and facilities for the first responders.

# Grant Highlights

## SOWING SEEDS OF GROWTH PAST GRANT AWARD UPDATES

### HANOVER COMMUNITY GARDEN INFRASTRUCTURE IMPROVEMENTS AWARDED IN 2022



In 2022, the Hanover Community Garden received a grant of \$10,000 for infrastructure improvements to the garden at 161 North Madison Street in Hanover. This grant allowed the organization to purchase seeds, garden tools, lawn equipment, raised planting beds, a storage shed, benches, and a pavilion. The garden continues to expand, grow healthy foods that are shared with Hanover and its residents, and provide educational programming and activities. Because of the volunteers' efforts, the Hanover Community Garden has transformed a corner that was once an eyesore into a beautiful place to gather, learn, and grow.

### LYDIA MIDDLETON ELEMENTARY ROOFTOP SENSORY GARDEN AWARDED IN 2025

At the beginning of 2026, Lydia Middleton Elementary completed its Rooftop Sensory Garden project. The school received \$4,500 through the Foundation's 2025 Competitive Grant Cycle to enhance their outdoor, rooftop patio space. With the grant, they've added patio umbrellas, artwork, artificial turf, cushions, and plants to create unique small group and classroom experiences. They have also used the patio as a calming space to meet one-on-one with students.



As an incentive, they've rewarded students with the opportunity to have lunch with teachers on the patio. Third grade classes have received Junior Master Gardener instruction from Jefferson County's Purdue Extension Office and the Madison Grocery Project, growing various vegetables in three raised planting beds. This project has been a terrific addition to the school's social and emotional enrichment endeavors for its students.

## 2025 Grant Awards Banquet

On September 30, 2025, the Community Foundation introduced a new format to its annual report to the community event. The inaugural Annual Report and Grant Awards Banquet, sponsored by German American Bank, was held that evening at the Welch Conference Room of the Fairfield Inn. This new format provided a buffet dinner to donors, volunteers, and grant recipients. Staff members, officers, and program chairs updated attendees on the Foundation's accomplishments from the past year. The night's program was capped off by awarding nearly \$435,000 to local nonprofit organizations through the 2025 Competitive Grant Cycle.

The event was a wonderful way to thank the donors who make the work of the Foundation possible, the Foundation's volunteers for giving of their time and talents to various programs, and the representatives of the nonprofits for the important work of serving the residents of Jefferson County.



# 2025 Scholarships

**Sarah Adams – Madison Consolidated High School**

*Madison Kiwanis Connor K. Salm Scholarship*

**Ava Armbrecht – Madison Consolidated High School**

*Dennis Holt Memorial Scholarship*

**Kyndal Ashcraft – Southwestern High School**

*Jefferson County 4-H Scholarship | Dale McNeely Scholarship*

**McKenzie Bayne – Christian Academy of Madison**

*Ralph and Robyn Jones Family Memorial Scholarship*

**Penelope Bibbs – Madison Consolidated High School**

*Curtis Wright Memorial Scholarship*

**Allison Birchfield – Southwestern High School**

*Lisa Cheatham Memorial Scholarship*

**Adam Boley – Southwestern High School**

*Christie Crafton Memorial Scholarship | Marcia S. Morrill Memorial Scholarship of the Madison Rotary Club |  
Mary Elizabeth Patterson Memorial Scholarship*

**Skyy Brackin – Madison Consolidated High School**

*Ralph and Robyn Jones Family Memorial Scholarship*

**Isabelle Burley – Madison Consolidated High School**

*Madison Chautauqua Scholarship for the Arts in Memory of Bob Fourhman*

**Natalie Bye – Madison Consolidated High School**

*Gary Chapman Memorial Scholarship | Dr. Fred S. Henderson Family Scholarship*

**Evan Cammack – Madison Consolidated High School**

*Helyn Bishop Scholarship | Custer Oratory Contest Merit Award | Norma A. Cull Memorial Scholarship |  
MCHS Class of 1966 Scholarship | Bonnie and Printis Shelton Scholarship*

**Avery Clayton – Madison Consolidated High School**

*Joseph V. Cline Scholarship | Custer Oratory Contest Merit Award | Dorothy B. Lotz Scholarship |  
Rainbow Youth Scholarship*

**Lillian Cox – Madison Consolidated High School**

*Thomas D. Craft, Jr. Memorial Scholarship |  
Jefferson County 4-H Scholarship | Larry and Charmaine Owens Madison Rotary Club Scholarship |  
Terry and Wanda Wood Memorial Scholarship*

**Alexa Davis – Madison Consolidated High School**

*Carl J. and Mary M. Hoefling Scholarship*

**Ashley Dean – Shawe Memorial High School**

*Hall Family Scholarship*

# 2025 LILLY ENDOWMENT

## COMMUNITY SCHOLARSHIP RECIPIENT

### William “Bodie” Harsin



As the 2025 Lilly Endowment Community Scholar, Madison Consolidated High School graduate William “Bodie” Harsin received a four-year, full-tuition scholarship and \$900 yearly stipend for required books and equipment. Bodie is the son of Kyle and Amanda Harsin of Madison. He currently attends Butler University and is pursuing a degree in Finance and Economics. On campus, he is involved in the Financial Management Association, Bulldog Report (an equity research group), and the Delta Tau Delta Fraternity.

“The support of the Community Foundation and the Lilly Endowment Scholarship has allowed me to focus on growing as a student and becoming more involved in Butler’s academic and campus community. Their investment made the Butler college experience possible, and I am grateful for the opportunity they have given me.”

Including Bodie, the five finalists (and their schools) of the 2025 Lilly Endowment Community Scholarship were: William Livingston (Madison Consolidated), Kelly McClure (Shawe Memorial), Lincoln Sheets (Madison Consolidated), and Emma Wynn (Madison Consolidated). Livingston, McClure, Sheets, and Wynn each received a \$1,500 Community Foundation Scholar Award for being named a finalist in recognition of their efforts and achievements.

The Lilly Endowment Community Scholarship is the result of a statewide Lilly Endowment Inc. initiative to help Hoosier students reach higher levels of education. Over 5,400 full-tuition scholarships have been awarded, and over \$505 million in scholarship tuition has been provided since the program’s inception in 1998.

#### Laken Dickerson – Madison Consolidated High School

*CAM Car Club Scholarship | Charles H. and C. Chris Keller Scholarship | Madison Railroad Scholarship in Memory of Robert Griffin | George and June Miller Scholarship | Bill Oldaker Scholarship of the Madison Rotary Club*

#### Jake Dyer – Madison Consolidated High School

*Jefferson County 4-H Scholarship*

#### Lillian Fox – Southwestern High School

*Jefferson County 4-H Scholarship*

#### Addison Gnagie – New Washington High School

*Christie Crafton Memorial Scholarship*

#### Maya Gordon – Madison Consolidated High School

*Cheatham Family Scholarship*

#### Anna Guirguis – Madison Consolidated High School

*Custer Oratory Contest Merit Award*

#### Aaron Hanson – Madison Consolidated High School

*Broadway School Alumni Scholarship | Lynn A. Maricle Music Scholarship*

#### William Harsin – Madison Consolidated High School

*Lilly Endowment Community Scholarship*

#### Austin Jenkins – Southwestern High School

*Brian W. Stites Memorial Scholarship*

#### Riley Jines – Madison Consolidated High School

*Dupont Alumni Scholarship | Jefferson County 4-H Scholarship*

#### Isabella Jones – Madison Consolidated High School

*Mayor Damon Welch Memorial Scholarship*

#### Alexander Kendall – Madison Consolidated High School

*Brad O’Leary Scholarship*

#### Landon Kidwell – Southwestern High School

*Keith Brooks Memorial Scholarship | Ralph and Robyn Jones Family Memorial Scholarship*

#### Graham Klein – Madison Consolidated High School

*Tiffany Lee Carter Memorial Scholarship*

#### Michelle Laguna-Rafael – Madison Consolidated High School

*Calvin Family Scholarship | Joseph V. Cline Scholarship | Mabel C. Green Memorial Scholarship | Glenn G. and Dorothy Ebel Huntington Memorial Scholarship*

#### Alexandria Lawson – Southwestern High School

*J. Michael Sample Memorial Scholarship for Music*

#### William Livingston – Madison Consolidated High School

*Community Foundation Scholar Award*

**Bailee Marshall – Madison Consolidated High School**  
*Sharon Thom Alcorn Memorial Scholarship | Mabel C. Green Memorial Scholarship*

**Kelly McClure – Shawe Memorial High School**  
*Community Foundation Scholar Award | Ralph and Margaret Seifert Scholarship of the Madison Rotary Club*

**Destiny Nicholson – Madison Consolidated High School**  
*Carolyn Bruce Spicer and Gene E. Spicer Nursing Scholarship*

**Colton O’Neal – Madison Consolidated High School**  
*Dupont Alumni Scholarship*

**Allison Palmer – Madison Consolidated High School**  
*Jefferson County 4-H Scholarship*

**Allie Riedel – Shawe Memorial High School**  
*The Wood Memorial Scholarship*

**James Schafer – Madison Consolidated High School**  
*Chan Chilton Memorial Scholarship*

**Nicholas Schultz – Shawe Memorial High School**  
*George and June Kirk Scholarship*

**Lincoln Sheets – Madison Consolidated High School**  
*Broadway School Alumni Scholarship | Community Foundation Scholar Award | Custer Oratory Contest Scholarship | Kenneth E. and Mary Lou Dunbar Scholarship in Honor of Perry and Dunbar Employees | Frances K. Eisan Memorial Scholarship/Class of '84 Scholarship | Dorothy B. Lotz Scholarship | Nathan Wilson Memorial Mathematics Scholarship*

**Joseph Shope – Madison Consolidated High School**  
*Troy Allen Pyles Memorial Scholarship*

**Lily Sloan – Jennings County High School**  
*Jefferson County 4-H Scholarship*

**Hunter Thompson – Madison Consolidated High School**  
*Jefferson County 4-H Scholarship*

**Paige Weaver – Madison Consolidated High School**  
*Dallas Lamb Visual Arts and Arts & Crafts Scholarship*

**Eden Wehner – Southwestern High School**  
*Dupont Alumni Scholarship | Jefferson County 4-H Scholarship*

**Aleigh Wilson – Madison Consolidated High School**  
*Terri Nighbert Memorial Scholarship*

**Emma Wynn – Madison Consolidated High School**  
*Community Foundation Scholar Award | Custer Oratory Contest Scholarship | Kiwanis Club Scholarship in Memory of John Hawk*



**2025 Scholarship Recipients**



**2025 Lilly Endowment Scholar Finalists**

# SCHOLARSHIP GUIDE BOOK

Thank you to Arvin Sango, Inc. for sponsoring the printing of our annual Scholarship Guidebook! Our next edition for the Class of 2027 will be available at the end of this year. We distribute copies to all of our local high school guidance counselor offices, as well as post a downloadable PDF version on the Scholarship page of our website – [www.cfmjc.org](http://www.cfmjc.org).



# Board & Staff

## Board Of Directors

Jenny Darnold - Chair  
Devon Sharpe - Vice Chair  
Phil McKay - Treasurer  
Tanner Mahoney - Secretary  
Daniel Butler  
Fernando Rubio  
Sandy Sailer  
Hannah Taylor  
Nancy Totten

## Staff

Bill Barnes  
President & CEO  
Kelly Miller  
Finance & Program Officer  
Kelley Hoagland  
Marketing & Donor Relations  
Manager  
Julie Wells  
Scholarship Coordinator

## 2025 BOARD



DANIEL BUTLER



JENNY DARNOLD



TANNER MAHONEY



PHIL MCKAY



FERNANDO RUBIO



SANDY SAILER



DEVON SHARPE



HANNAH TAYLOR



NANCY TOTTEN

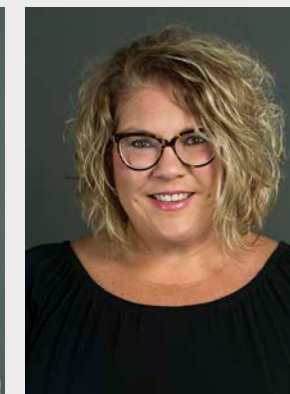
## STAFF



BILL BARNES



KELLEY HOAGLAND



KELLY MILLER



JULIE WELLS

# Past Board Members

(Years of Service)

Roger Allman (1999-2003)  
 Mike Armstrong (1997-2003)  
 Darrell Auxier (1991-1996)  
 Dan Baughman (2000-2006)  
 Nancy Bear (2007-2008)  
 Anthony Brandon (2011-2017)  
 Jim Braun (2003-2010)  
 Timothy Breeding (2005-2011)  
 Todd Bruther (2017-2023)  
 Ben Canida (2012-2015)  
 Cliff Carnes (2012-2015)  
 Janet E. Castor (1999-2002)  
 Lonnie Collins (2000-2006)  
 Darleen Connolly (2012-2018)  
 David J. Craig (1991-1997)  
 Tom Davee (1996-2002)  
 Carri Dirksen (2010-2016)  
 Mike Dorsey (2000-2006)  
 Cecil Dorten (1991-1993)  
 Brenda Eversole (1991-1996)  
 Gregory K. Flood (1991-1993)  
 Ben Foley (2015-2021)  
 Matt Forrester (2000-2006)  
 Virginia Franks (1996-1999)  
 Sam George (1997-2000)  
 Jaman Geyman (2015-2021)  
 Robin Goodknight (2015-2018)  
 Constance M. Goodman (2000-2006)  
 Ann Grahm (1991-1997)  
 Terry Grote (1996-2002)  
 Walter F. Grote, Jr. (1991-1996)  
 Thomas V. Hambrick (1991-1993)  
 Bonnie Hare (2010-2016)  
 William H. Hensler (2001-2007)  
 Robert D. Hoban (1991-1998)  
 Scott Hubbard (2016-2022)  
 Kathleen Huffman (2005-2009)  
 Al Huntington (2011-2017)  
 Alice Jackson (2004-2010)  
 Curt Jacobs (1998-2004)  
 Jane W. Jacobs (1991-1998)  
 Jane Jakoubek (2004-2006)  
 Joe Jenner (2014-2020)  
 Kris W. Kindelsperger (1991-1998)  
 Sue Kittinger (2002)

Fred Koehler (2003-2009)  
 Beth Lichlyter (2019-2025)  
 Lillian Sue Livers (1995-1999)  
 Lynn Maricle (2018-2024)  
 Donald McCauley (2002-2007)  
 Chuck McKay (2009-2015)  
 Gerry Michl (2002-2007)  
 Marcella Modisett, MD (1995-2000)  
 Sarah Morgan (1995-2001)  
 Bernard Murphy (1994-1996)  
 James C. Pendleton (1993-1997)  
 Eric Phagan (2013-2016)  
 Donald L. Phillips (1995-2000)  
 Dr. Ralph Pratt (1991-1993)  
 Dotti Reindollar (1991-1994)  
 Ivan Rimstidt, D.V.M. (1993-1999)  
 Howard Risk (1997-2000)  
 Michael Robinson (2008-2014)  
 Bruce Rose (1993-1994)  
 Tim Sandker (1996-2000)  
 Rhonda Sauley (1994-1998)  
 Susan Schmidt (2008-2011)  
 Ashley Schutte (2007-2013)  
 Ann Schwartz (2016-2022)  
 E. Perin Scott (1991-1996)  
 Wendell Seaborne (1998-2000)  
 Betty L. Sebree (2001-2007)  
 Margaret Seifert-Russell (2011-2017)  
 Phil Sherman (1992-1998)  
 Tom Solomon (2006-2012)  
 Susan Stack (2006-2013)  
 Ann Suchocki (2014-2020)  
 Rich Sutter (1998-2000)  
 Steve Telfer (2013-2018)  
 Barbara Trimble (1991-1995)  
 Nancy Underwood (1999-2005)  
 Donn Vecchie-Campbell (2011-2014)  
 Betsey Vonderheide (2017-2023)  
 Tony Waltz (1999-2005)  
 JD Webster (2019-2025)  
 Josh Wilber (2016-2018)  
 Roger Williams (2008-2011)  
 Stephanie Withered (2017-2023)  
 Mark Wynn (2006-2012)

# Other Community Volunteers

Dora Anim  
 Michele Barlow  
 Rob Barlow  
 Marta Belt  
 Anthony Brandon  
 Launa Braun  
 Helen Cope  
 Kathy Crafton  
 Greg Deaton  
 Jane Durst  
 Carrie Dickerson  
 Brenda Eversole  
 Andrew Forrester  
 Tracy Geglein  
 Bryan Goddard  
 Leslie Grote  
 Paula Hartman  
 Keith Howard  
 Scott Hubbard  
 Misty Jacobs  
 Leah James  
 Shareen Kring  
 Chad Lewis  
 Tomeka Livers  
 Lynn Maricle  
 Cindy McKay  
 Angela Miller  
 Margo Olson  
 Brenda Partridge  
 Don Phillips  
 Emily Powers  
 Sarah Prasil  
 Shelli Reetz  
 Gloria Risk  
 Amber Schafer  
 Greg Schneider  
 Annie Schroeder  
 Shawna Shaffer  
 Rachel Sharpe  
 Austin Sims  
 Janelle Smith  
 Jessica Spiess  
 JoAnne Spiller  
 Sue Stack  
 Hilary Steinhardt  
 Joe Todd  
 Larry Truax  
 Karen VanderPloeg  
 Jan Vetrhus  
 Betsey Vonderheide  
 DJ Walch  
 Brittany Watson  
 David Webster  
 JD Webster  
 Joyce Wells  
 Meghan Welty  
 Stephanie Withered



## DON PHILLIPS

### VOLUNTEER SPOTLIGHT

The Foundation would like to recognize Don Phillips for his volunteer service. He served as a CFMJC volunteer for **25 years** – the longest tenure of service to date. Don began his volunteer journey with the Community Foundation as a board member in 1995. During his time on the Board, he served on the Grants Committee and was its Chair from 1996 to 1997. Don then took on the role of Board Chair from 1998 to 1999. In those 6 years of service, Don and his fellow directors were instrumental in seeing firsts and milestones for the organization that included:

- Participation in four Lilly Endowment Inc. initiatives
- The launch of the Lilly Endowment Community Scholarship program
- The creation of three affiliates that are now stand-alone community foundations – Dearborn County Community Foundation, Ripley County Community Foundation, and the Community Foundation of Switzerland County
- Presentation of the first scholarship endowment awards to local students

After retiring from the Foundation's Board of Directors, Don served on the Investment Committee for 19 years, where the Foundation benefited from his banking and investment advisor expertise. He concluded his service in November 2025.

Thank you, Don, for giving of your time and talents to the Community Foundation. Your leadership and service have impacted Jefferson County for generations to come!

## CONSOLIDATED STATEMENTS OF FINANCIAL POSITION

### Assets

	2025	2024
Cash and cash equivalents	\$904,691	\$718,683
Certificate of Deposit	\$700,000	-
Investments	\$50,703,948	\$43,694,782
Other assets	\$353	\$353
Property and equipment, net	\$210,750	\$217,750
<b>Total</b>	<b>\$52,519,742</b>	<b>\$44,631,568</b>

### Liabilities and Net Assets

	2025	2024
<b>Liabilities</b>		
Accounts payable	\$539	\$1,293
Grants payable	\$64,000	\$2,150
Charitable gift annuities	-	\$1,309,588
Custodial funds	\$1,847,432	\$1,531,647
<b>Total liabilities</b>	<b>\$1,911,971</b>	<b>\$2,844,678</b>

### Net assets

Without donor restrictions		
Operating	\$467,063	\$ 500,420
Board Designated Administrative Endowment	\$557,505	\$278,062
<b>Total without donor restrictions</b>	<b>\$1,024,568</b>	<b>\$778,482</b>
With donor restrictions		
Restricted for specified purpose	\$1,104,881	\$347,180
Restricted in perpetuity - endowment	\$32,531,482	\$27,870,567
Restricted subject to the Organization's spending policy	\$15,946,840	\$ 12,790,661
<b>Total with donor restrictions</b>	<b>\$49,583,203</b>	<b>\$41,008,408</b>
<b>Total net assets</b>	<b>\$50,607,771</b>	<b>\$41,786,890</b>
	<b>\$52,519,742</b>	<b>\$44,631,568</b>

## CONSOLIDATED STATEMENT OF ACTIVITIES

	2025			2024
	Without Donor Restrictions	With Donor Restrictions	Total	Total
<b>Support, revenues and other</b>				
Contributions				
Cash and other financial assets	\$105,528	\$2,696,008	\$2,801,536	\$2,783,402
Nonfinancial assets	-	-	-	-
Change in value of charitable gift annuities	-	\$1,267,784	\$1,267,784	(\$82,638)
Investment return, net	\$72,175	\$6,549,280	\$6,621,455	\$3,194,126
Management fees	\$595,979	-	\$595,979	\$528,121
Other revenues	\$12,022	-	\$12,022	\$12,018
Net assets released from restrictions	\$1,938,277	(\$1,938,277)	-	-
<b>Total support, revenues and other</b>	<b>\$2,723,981</b>	<b>\$8,574,795</b>	<b>\$11,298,776</b>	<b>\$6,435,029</b>
<b>Expenses</b>				
Program services	\$2,106,999	-	\$2,106,999	\$1,995,513
Management & general	\$207,458	-	\$207,458	\$196,169
Fundraising & development	\$163,438	-	\$163,438	\$163,040
<b>Total expenses</b>	<b>\$2,477,895</b>	<b>-</b>	<b>\$2,477,895</b>	<b>\$2,354,722</b>
<b>Change in net assets</b>	<b>\$246,086</b>	<b>\$8,574,795</b>	<b>\$8,820,881</b>	<b>\$4,080,307</b>
<b>Net assets, beginning of year</b>	<b>\$778,482</b>	<b>\$41,008,408</b>	<b>\$41,786,890</b>	<b>\$37,706,583</b>
<b>Net assets, end of year</b>	<b>\$1,024,568</b>	<b>\$49,583,203</b>	<b>\$50,607,771</b>	<b>\$41,786,890</b>

